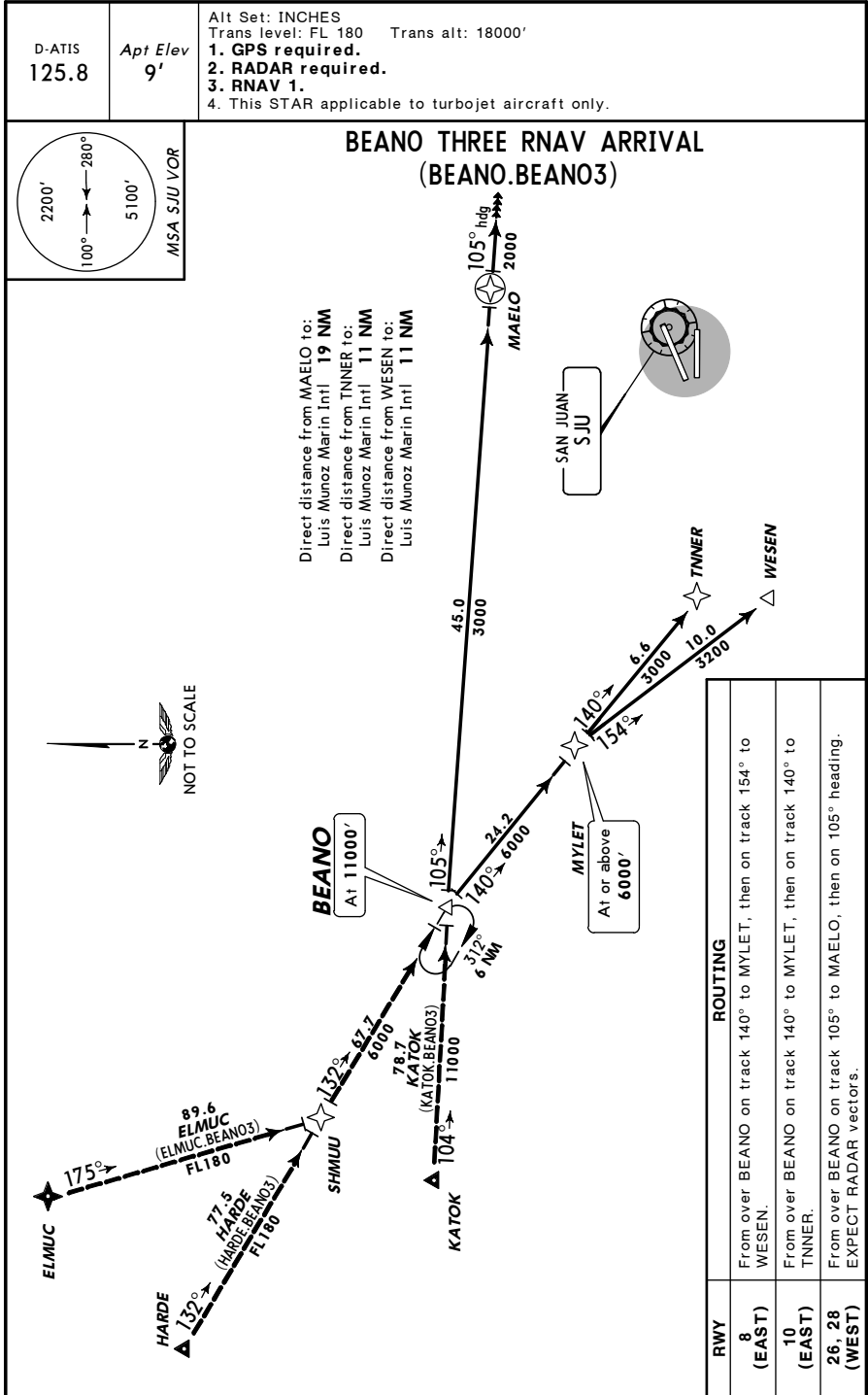
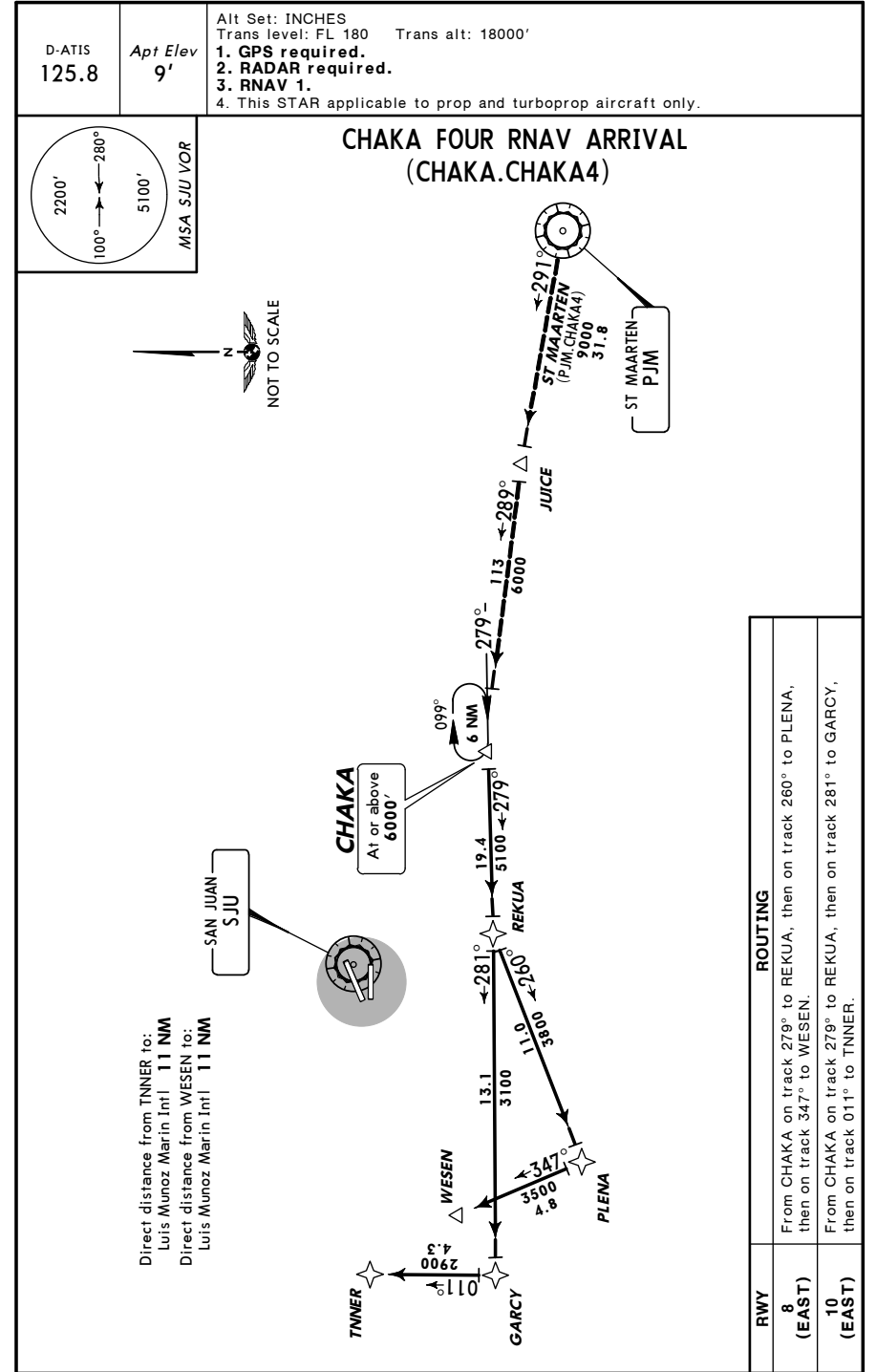


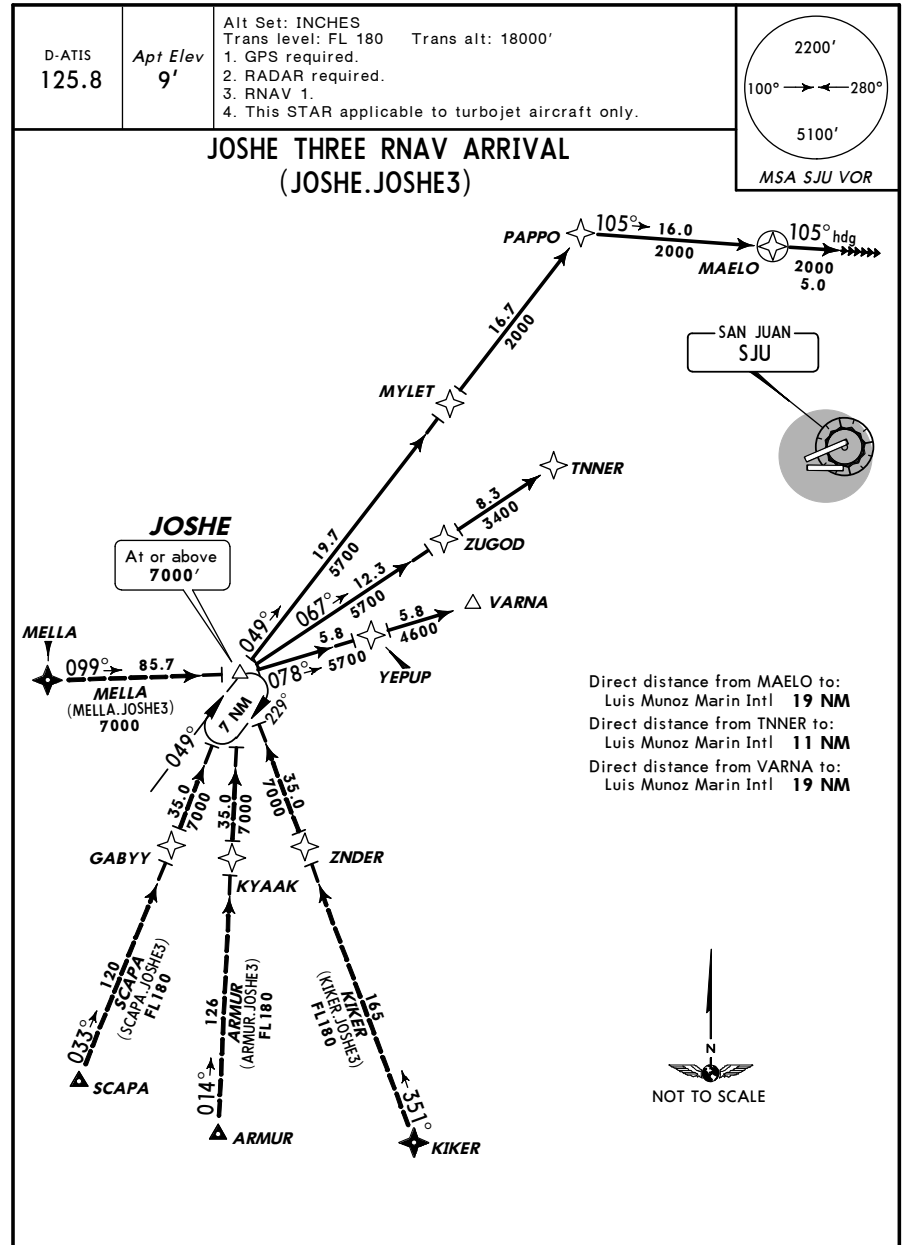
TJSJ/SJU JEPPESEN SAN JUAN, PUERTO RICO
 LUIS MUNOZ MARIN INTL 7 JAN 11 (10-2) Eff 13 Jan RNAV STAR



TJSJ/SJU JEPPESEN SAN JUAN, PUERTO RICO
 LUIS MUNOZ MARIN INTL 7 JAN 11 (10-2A) Eff 13 Jan RNAV STAR

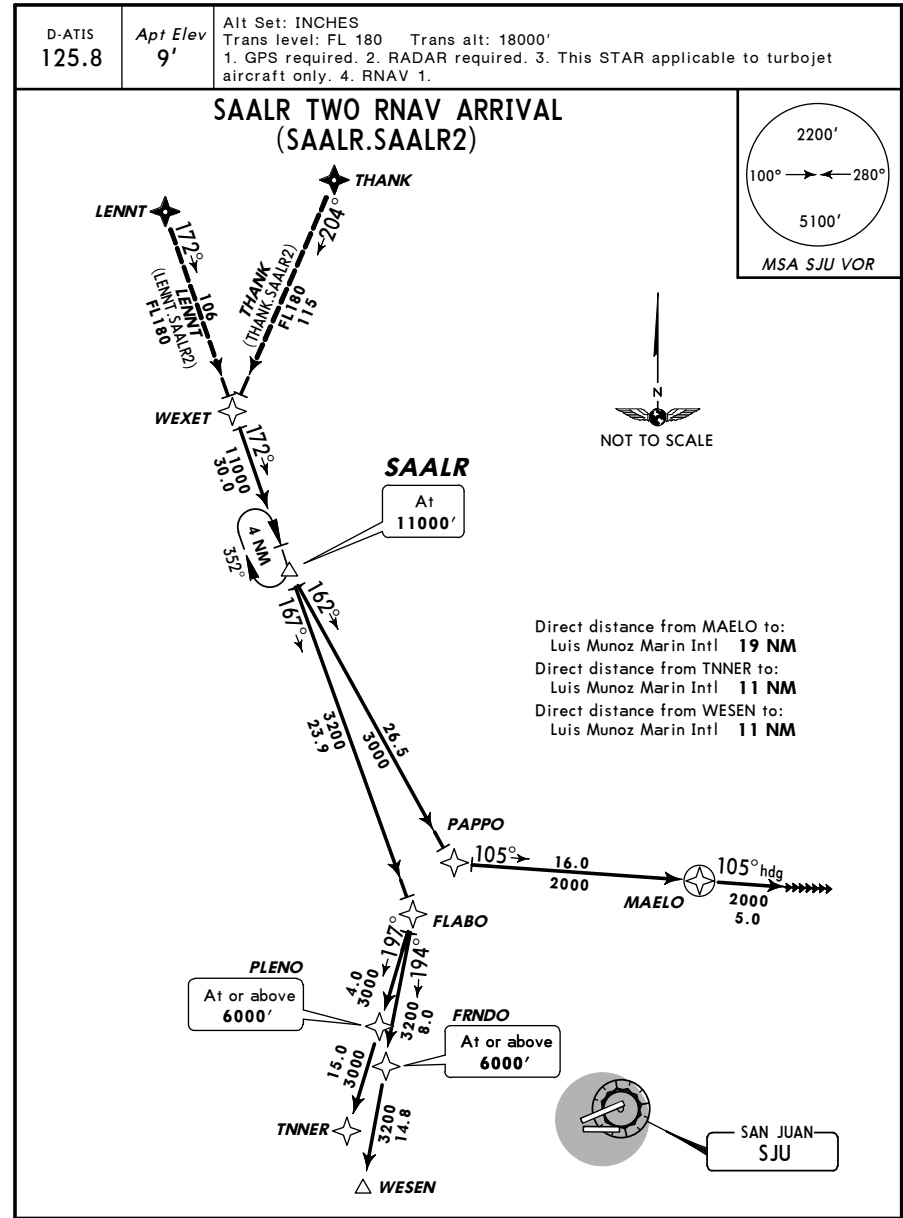


TJSJ/SJU **JEPPESEN** **SAN JUAN, PUERTO RICO**
 LUIS MUNOZ MARIN INTL 12 NOV 10 (10-2B) Eff 18 Nov **RNAV STAR**



RWY	ROUTING
8 (EAST)	From over JOSHE on track 078° to YEPUP, then on track 078° to VARN A.
10 (EAST)	From over JOSHE on track 067° to ZUGOD, then on track 067° to TNNER.
26, 28 (WEST)	From over JOSHE on track 049° to MYLET, then on track 049° to PAPP0, then on track 105° to MAELO, then on heading 105°. EXPECT RADAR vectors to final approach course.

TJSJ/SJU **JEPPESEN** **SAN JUAN, PUERTO RICO**
 LUIS MUNOZ MARIN INTL 12 NOV 10 (10-2C) Eff 18 Nov **RNAV STAR**

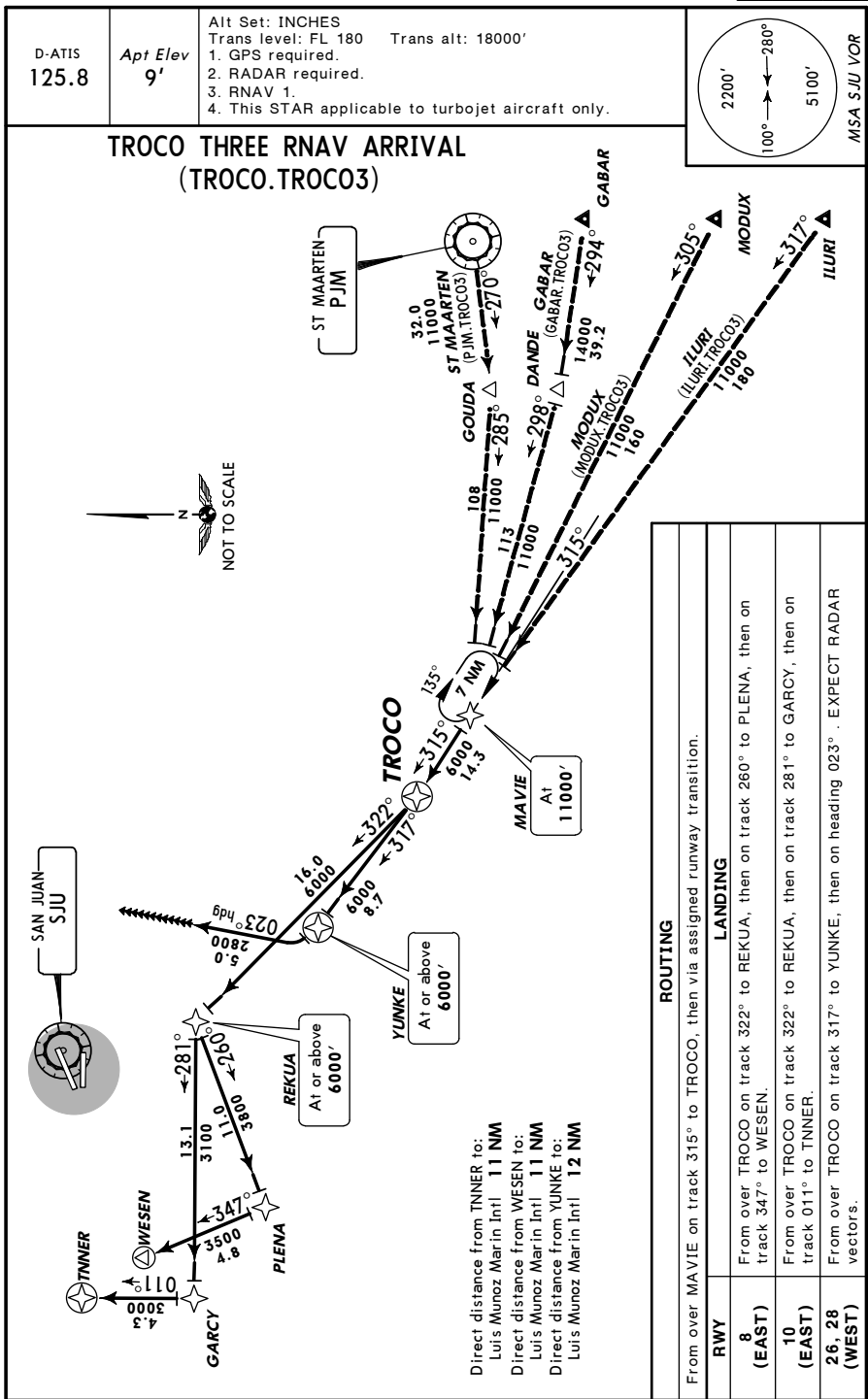


ROUTING

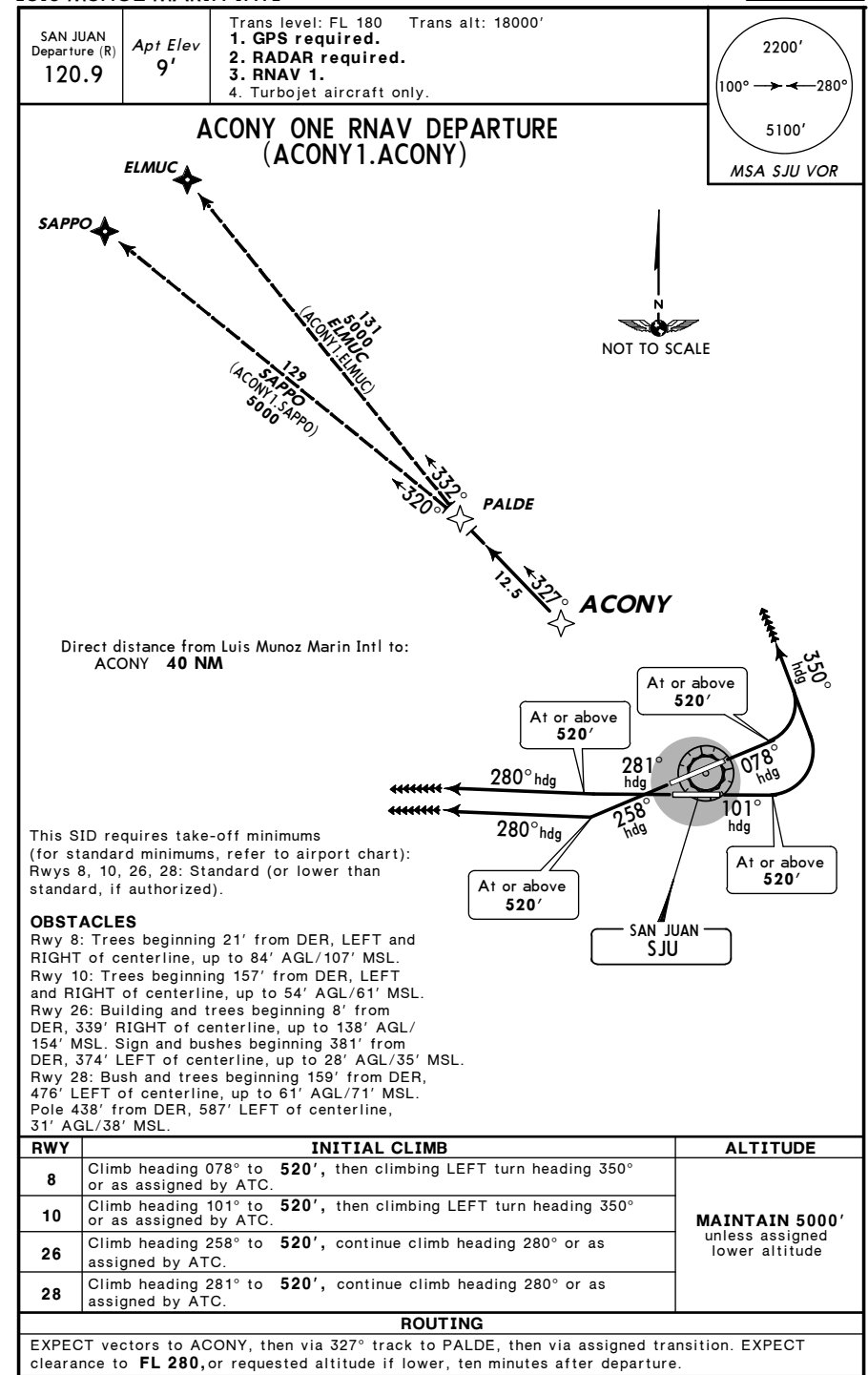
From WEXET on track 172° to SAALR, then via assigned runway transition.

RWY	LANDING
8 (EAST)	From over SAALR on track 167° to FLABO, then on track 194° to FRNDO, then on track 194° to WESEN.
10 (EAST)	From over SAALR on track 167° to FLABO, then on track 197° to PLENO, then on track 197° to TNNER.
26, 28 (WEST)	From over SAALR on track 162° to PAPP0, then on track 105° to MAELO, then on heading 105°. EXPECT RADAR vectors to final approach course.

TJSJ/SJU **JEPPESEN** **SAN JUAN, PUERTO RICO**
 LUIS MUNOZ MARIN INTL 12 NOV 10 (10-2D) Eff 18 Nov **RNAV STAR**

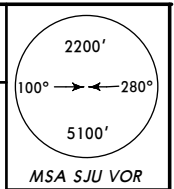


TJSJ/SJU **JEPPESEN** **SAN JUAN, PUERTO RICO**
 LUIS MUNOZ MARIN INTL 26 NOV 10 (10-3) **RNAV SID**

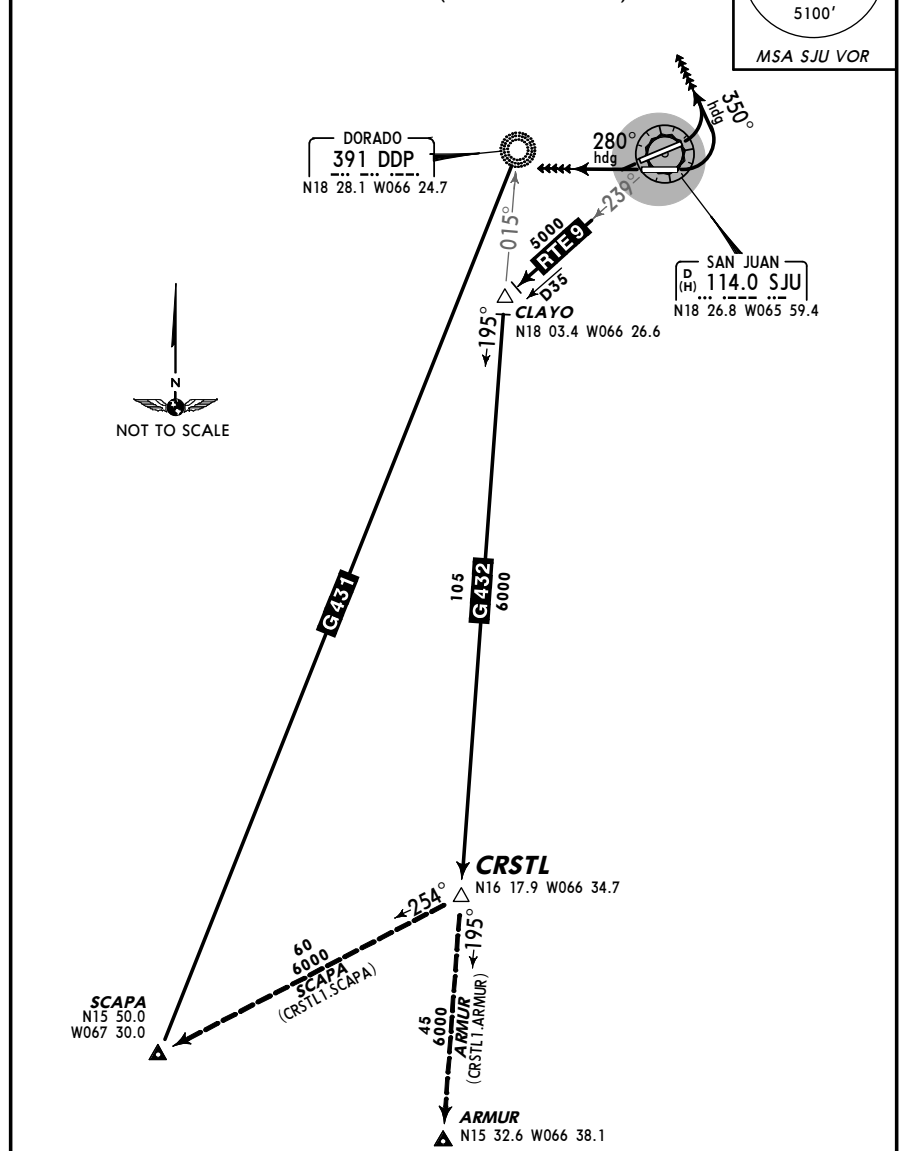


TJSJ/SJU JEPPESEN SAN JUAN, PUERTO RICO
 LUIS MUNOZ MARIN INTL 26 NOV 10 (10-3A) SID

SAN JUAN Departure (R) 119.4	Apt Elev 9'	Trans level: FL 180 RNAV required.	Trans alt: 18000'
------------------------------------	----------------	---------------------------------------	-------------------



CRSTL ONE DEPARTURE (CRSTL1.CRSTL)



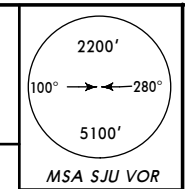
RWY	INITIAL CLIMB	ALTITUDE
8, 10	Turn LEFT heading 350° for vector to intercept SJU R-239 to CLAYO, then via G-432 to CRSTL.	MAINTAIN 5000' unless assigned lower altitude
26, 28	Fly heading 280° for vector to intercept SJU R-239 to CLAYO, then via G-432 to CRSTL.	

ROUTING

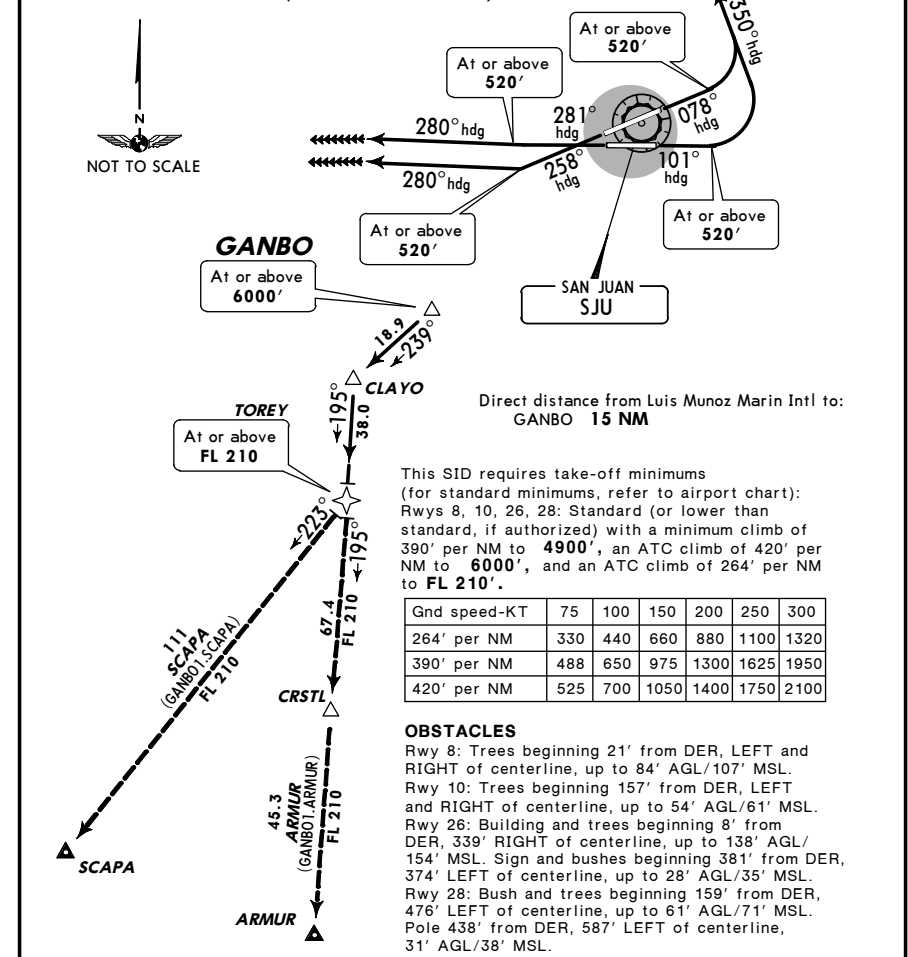
EXPECT clearance to **FL 280** or requested altitude, if lower, ten minutes after departure.

TJSJ/SJU JEPPESEN SAN JUAN, PUERTO RICO
 LUIS MUNOZ MARIN INTL 26 NOV 10 (10-3B) RNAV SID

SAN JUAN Departure (R) 119.4	Apt Elev 9'	Trans level: FL 180 1. GPS required. 2. RADAR required. 3. RNAV 1. 4. If unable to accept climb rates, advise ATC on initial contact. 5. Turbojet aircraft only.	Trans alt: 18000'
------------------------------------	----------------	---	-------------------



GANBO ONE RNAV DEPARTURE (GANBO1.GANBO)



Direct distance from Luis Munoz Marin Intl to GANBO 15 NM

This SID requires take-off minimums (for standard minimums, refer to airport chart):
 Rwy 8, 10, 26, 28: Standard (or lower than standard, if authorized) with a minimum climb of 390' per NM to 4900', an ATC climb of 420' per NM to 6000', and an ATC climb of 264' per NM to FL 210'.

Gnd speed-KT	75	100	150	200	250	300
264' per NM	330	440	660	880	1100	1320
390' per NM	488	650	975	1300	1625	1950
420' per NM	525	700	1050	1400	1750	2100

OBSTACLES
 Rwy 8: Trees beginning 21' from DER, LEFT and RIGHT of centerline, up to 84' AGL/107' MSL.
 Rwy 10: Trees beginning 157' from DER, LEFT and RIGHT of centerline, up to 54' AGL/61' MSL.
 Rwy 26: Building and trees beginning 8' from DER, 339' RIGHT of centerline, up to 138' AGL/154' MSL. Sign and bushes beginning 381' from DER, 374' LEFT of centerline, up to 28' AGL/35' MSL.
 Rwy 28: Bush and trees beginning 159' from DER, 476' LEFT of centerline, up to 61' AGL/71' MSL.
 Pole 438' from DER, 587' LEFT of centerline, 31' AGL/38' MSL.

RWY	INITIAL CLIMB	ALTITUDE
8	Climb heading 078° to or as assigned by ATC. 520', then climbing LEFT turn heading 350°	MAINTAIN 5000' unless assigned lower altitude
10	Climb heading 101° to or as assigned by ATC. 520', then climbing LEFT turn heading 350°	
26	Climb heading 258° to 520', continue climb heading 280° or as assigned by ATC.	
28	Climb heading 281° to 520', continue climb heading 280° or as assigned by ATC.	

ROUTING

EXPECT vectors to GANBO, then via depicted route to TOREY, then via assigned transition. EXPECT clearance to **FL 280**, or requested altitude if lower, ten minutes after departure.

TJSJ/SJU **JEPPESEN** **SAN JUAN, PUERTO RICO**
 LUIS MUNOZ MARIN INTL 26 NOV 10 (10-3C) **RNAV SID**

SAN JUAN Departure (R) 120.9	Apt Elev 9'	Trans level: FL 180 Trans alt: 18000' 1. GPS required. 2. RADAR required. 3. RNAV 1. 4. Turbojet aircraft only.	 2200' 100° → ← 280° 5100' MSA SJJ VOR
---	-----------------------	--	--

GLADA TWO RNAV DEPARTURE (GLADA2.GLADA)

Direct distance from Luis Munoz Marin Intl to:
 GLADA **30 NM**

This SID requires take-off minimums (for standard minimums, refer to airport chart):
 Rws 8, 10, 26, 28: Standard (or lower than standard, if authorized).

OBSTACLES
 Rwy 8: Trees beginning 21' from DER, LEFT and RIGHT of centerline, up to 84' AGL/107' MSL.
 Rwy 10: Trees beginning 157' from DER, LEFT and RIGHT of centerline, up to 54' AGL/61' MSL.
 Rwy 26: Building and trees beginning 8' from DER, 339' RIGHT of centerline, up to 138' AGL/154' MSL. Sign and bushes beginning 381' from DER, 374' LEFT of centerline, up to 28' AGL/35' MSL.
 Rwy 28: Bush and trees beginning 159' from DER, 476' LEFT of centerline, up to 61' AGL/71' MSL. Pole 438' from DER, 587' LEFT of centerline, 31' AGL/38' MSL.

RWY	INITIAL CLIMB	ALTITUDE
8	Climb heading 078° to 520' , then climbing LEFT turn heading 020° or as assigned by ATC.	MAINTAIN 5000' unless assigned lower altitude
10	Climb heading 101° to 520' , then climbing LEFT turn heading 020° or as assigned by ATC.	
26	Climb heading 258° to 520' , continue climb heading 280° or as assigned by ATC.	
28	Climb heading 281° to 520' , continue climb heading 280° or as assigned by ATC.	

ROUTING

EXPECT vectors to GLADA, then via 010° track to MAWLY, then via assigned transition.
 EXPECT clearance to **FL 280**, or requested altitude if lower, ten minutes after departure.

CHANGES: MSA. © JEPPESEN, 2009, 2010. ALL RIGHTS RESERVED.

TJSJ/SJU **JEPPESEN** **SAN JUAN, PUERTO RICO**
 LUIS MUNOZ MARIN INTL 26 NOV 10 (10-3D) **RNAV SID**

SAN JUAN Departure (R) 120.9	Apt Elev 9'	Trans level: FL 180 Trans alt: 18000' 1. GPS required. 2. RADAR required. 3. RNAV 1. 4. Prop and turboprop aircraft only.	 2200' 100° → ← 280° 5100' MSA SJJ VOR
---	-----------------------	--	--

HAMAR ONE RNAV DEPARTURE (HAMAR1.HAMAR)

Direct distance from Luis Munoz Marin Intl to:
 HAMAR **23 NM**

This SID requires take-off minimums (for standard minimums, refer to airport chart):
 Rws 8, 10: Standard (or lower than standard, if authorized) with an ATC climb of 230' per NM to **5000'**.
 Rws 26, 28: Not authorized -ATC.

RWY	INITIAL CLIMB	ALTITUDE
8	Climb heading 078° to 520' , continue climb.	MAINTAIN 5000' unless assigned lower altitude
10	Climb heading 101° to 520' , continue climb.	

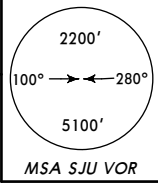
ROUTING

EXPECT vectors to HAMAR, then via 095° track to MAILL, then via assigned transition.
 EXPECT clearance to **FL 280**, or requested altitude if lower, ten minutes after departure.

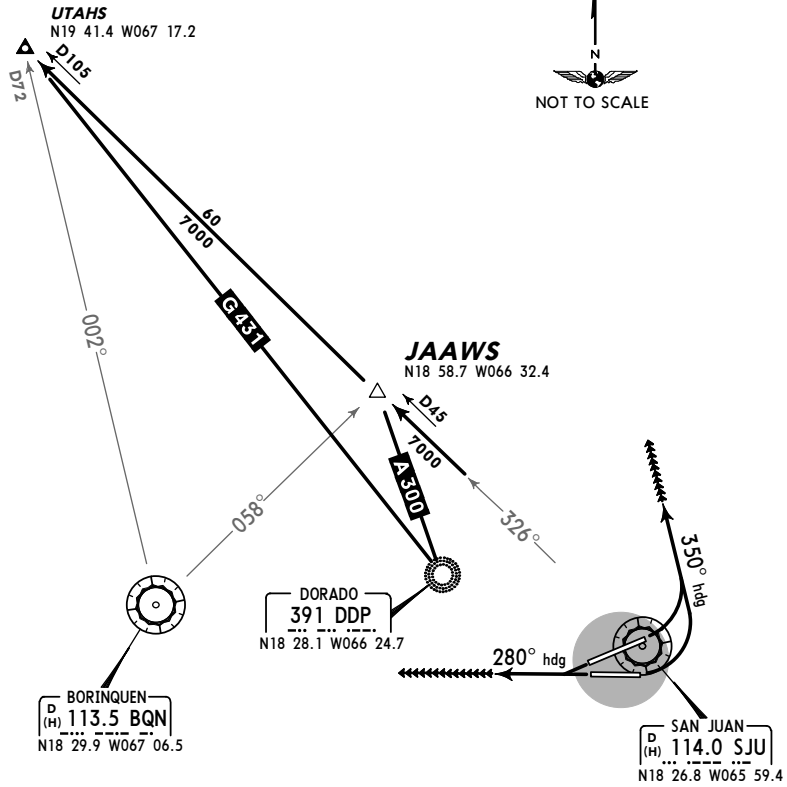
CHANGES: MSA. © JEPPESEN, 2009, 2010. ALL RIGHTS RESERVED.

TJSJ/SJU SAN JUAN, PUERTO RICO
 LUIS MUNOZ MARIN INTL 26 NOV 10 (10-3E) **SID**

SAN JUAN Departure (R) 119.4
 Apt Elev 9'
 Trans level: FL 180 Trans alt: 18000'
 DME or RNAV required.



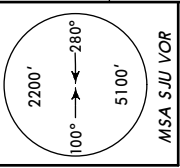
JAAWS NINE DEPARTURE (JAAWS9.JAAWS)



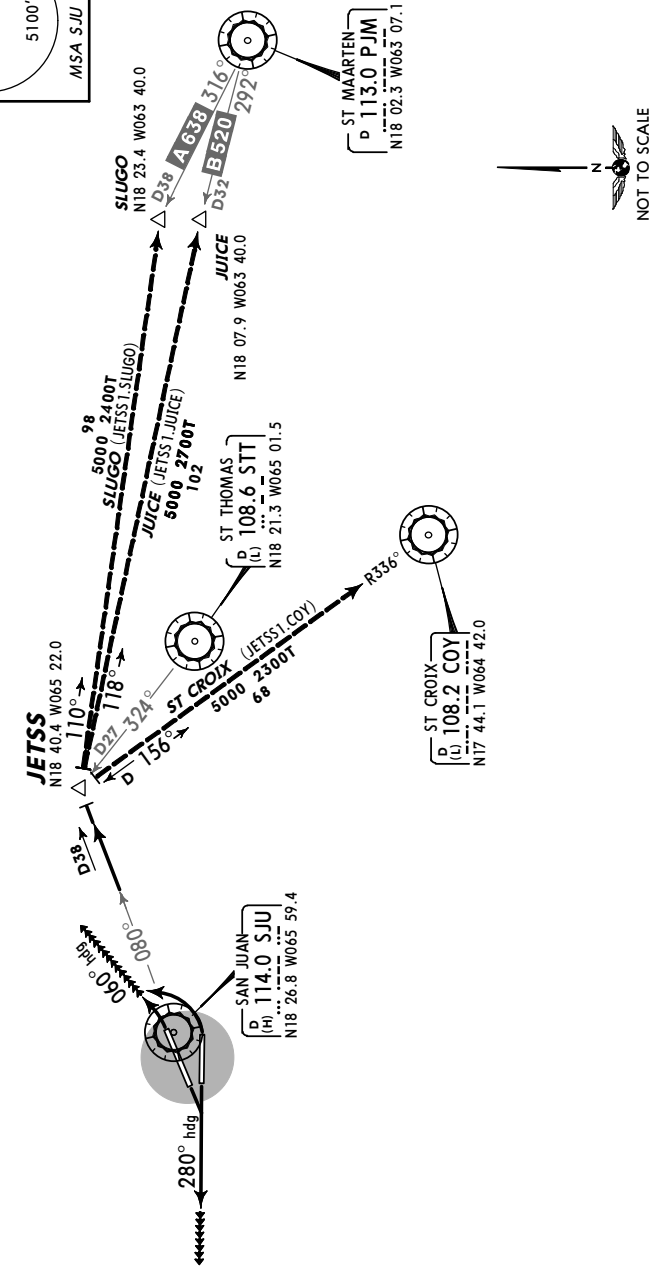
RWY	INITIAL CLIMB	ALTITUDE
8, 10	Turn LEFT heading 350° for RADAR vector to intercept SJU R-326 to UTAHS.	MAINTAIN 5000' unless assigned lower altitude
26, 28	Fly heading 280° for RADAR vector to intercept SJU R-326 to UTAHS.	
ROUTING		
EXPECT clearance to FL 280 or requested altitude, if lower, ten minutes after departure.		

TJSJ/SJU SAN JUAN, PUERTO RICO
 LUIS MUNOZ MARIN INTL 26 NOV 10 (10-3F) **SID**

SAN JUAN Departure (R) 120.9
 Apt Elev 9'
 Trans level: FL 180 Trans alt: 18000'
 RNAV required.



JETSS ONE DEPARTURE (JETSS1.JETSS)



RWY	INITIAL CLIMB	ALTITUDE
8, 10	Turn LEFT heading 060° for vector to intercept SJU R-080 to JETSS.	MAINTAIN 5000' unless assigned lower altitude
26, 28	Fly heading 280° for vector to intercept SJU R-080 to JETSS.	
ROUTING		
EXPECT clearance to FL 280 , or requested altitude if lower, ten minutes after departure.		

TJSJ/SJU **JEPPESEN** **SAN JUAN, PUERTO RICO**
 LUIS MUNOZ MARIN INTL 26 NOV 10 (10-3G) **RNAV SID**

SAN JUAN Departure (R) 120.9	Apt Elev 9'	Trans level: FL 180 Trans alt: 18000' 1. GPS required. 2. RADAR required. 3. RNAV 1. 4. Prop and turboprop aircraft only.
---	-----------------------	--

SNGRA ONE RNAV DEPARTURE (SNGRA1.SNGRA)

Direct distance from Luis Munoz Marin Intl to: SNGRA 14 NM

Obstacles: CHAKA 137', ST CROIX COY 5000'

Obstacles: SLUGO 5000', JUICE 5000'

Obstacles: BORINQUEN 113.5 BQN, DORADO 391 DDP, SAN JUAN 114.0 SJU

OBSTACLES

Rwy 26: Building and trees beginning 8' from DER, 339' RIGHT of centerline, up to 138' AGL/154' MSL. Sign and bushes beginning 381' from DER, 374' LEFT of centerline, up to 28' AGL/35' MSL.

Rwy 28: Bush and trees beginning 159' from DER, 476' LEFT of centerline, up to 61' AGL/71' MSL. Pole 438' from DER, 587' LEFT of centerline, 31' AGL/38' MSL.

RWY	INITIAL CLIMB	ALTITUDE
26	Climb heading 258° to 520', continue climb.	MAINTAIN 5000' unless assigned lower altitude
28	Climb heading 281° to 520', continue climb.	

ROUTING

EXPECT vectors to SNGRA, then via 113° track to CHAKA, then via assigned transition. EXPECT clearance to **FL 280**, or requested altitude if lower, ten minutes after departure.

TJSJ/SJU **JEPPESEN** **SAN JUAN, PUERTO RICO**
 LUIS MUNOZ MARIN INTL 26 NOV 10 (10-3H) **SID**

SAN JUAN Departure (R) 120.9	Apt Elev 9'	Trans level: FL 180 Trans alt: 18000' RADAR required.
---	-----------------------	---

VERMO FIVE DEPARTURE (VERMO5.VERMO)

Direct distance from Luis Munoz Marin Intl to: VERMO 14 NM

Obstacles: BORINQUEN 113.5 BQN, DORADO 391 DDP, VERMO 2200', 5100'

OBSTACLES

Rwy 8: Trees beginning 21' from DER, LEFT and RIGHT of centerline, up to 84' AGL/107' MSL.

Rwy 10: Trees beginning 157' from DER, LEFT and RIGHT of centerline, up to 54' AGL/61' MSL.

Rwy 26: Building and trees beginning 8' from DER, 339' RIGHT of centerline, up to 138' AGL/154' MSL. Sign and bushes beginning 381' from DER, 374' LEFT of centerline, up to 28' AGL/35' MSL.

Rwy 28: Bush and trees beginning 159' from DER, 476' LEFT of centerline, up to 61' AGL/71' MSL. Pole 438' from DER, 587' LEFT of centerline, 31' AGL/38' MSL.

RWY	INITIAL CLIMB	ALTITUDE
8, 10	Climbing LEFT turn heading 020° or as assigned by ATC.	MAINTAIN 5000' unless assigned lower altitude
26, 28	Climb heading 280° or as assigned by ATC.	

ROUTING

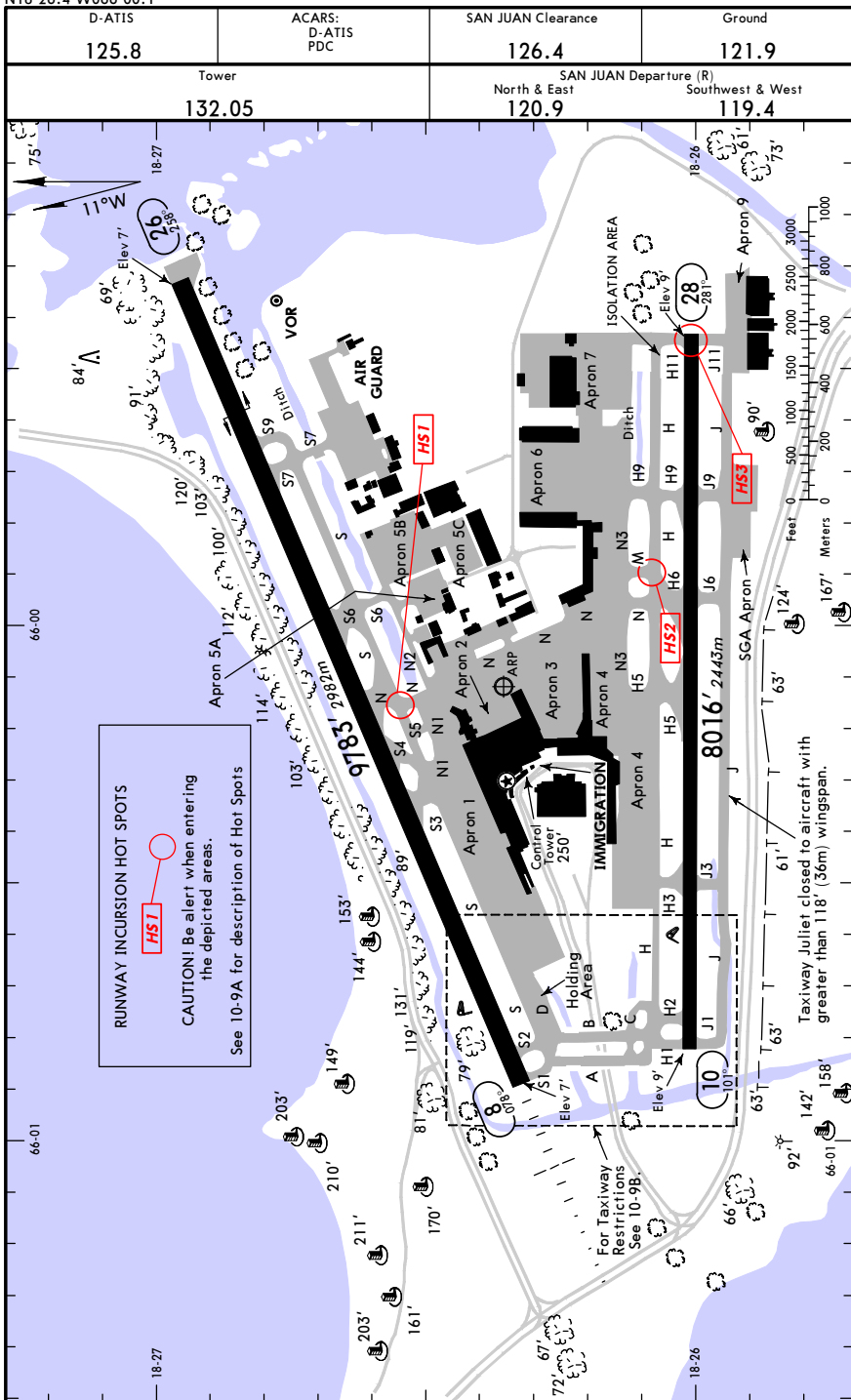
EXPECT vectors to intercept SJU R-004 to VERMO. EXPECT clearance to **FL 280**, or requested altitude if lower, ten minutes after departure.

TJSJ/SJU

Apt Elev 9'
 N18 26.4 W066 00.1

JEPPESEN SAN JUAN, PUERTO RICO

19 MAR 10 (10-9) LUIS MUNOZ MARIN INTL



CHANGES: Rwy 8/26, rwy end elevations.

© JEPPESEN, 2001, 2010. ALL RIGHTS RESERVED.

TJSJ/SJU

JEPPESEN SAN JUAN, PUERTO RICO

19 MAR 10 (10-9A) LUIS MUNOZ MARIN INTL

GENERAL					
Low level wind shear alert system.					
Terminal Doppler Weather Radar.					
48 hr prior permission required for parking of general aviation and DC3 type aircraft of larger. Send request to Puerto Rico Port authority.					
24 hr prior permission required for all military transport aircraft. C5's not authorized due to construction.					
ADDITIONAL RUNWAY INFORMATION					
RWY		USABLE LENGTHS	LANDING BEYOND		WIDTH
			Threshold	Glide Slope	
8	HIRL MALSR PAPI-L (angle 3.00°)	grooved		8785' 2678m	200' 61m
26	HIRL REIL	grooved			
10	HIRL PAPI-L (angle 3.00°)	grooved		7012' 2137m	150' 46m
28					
RUNWAY INCURSION HOT SPOTS					
(For information only, not to be construed as ATC instructions.)					
<p>HS1 The intersection of Twy S & N</p> <p>HS2 The intersection of Twy H & M</p> <p>HS3 The Twys on the north and south sides of the approach end of Rwy 28</p>					
TAKE-OFF & OBSTACLE DEPARTURE PROCEDURE					
All Rwys					
Adequate Vis Ref			STD		
1 & 2 Eng	1/4		1		
3 & 4 Eng			1/2		
OBSTACLE DP					
Rwy 8, climb on a heading between 109° counter-clockwise to 258° from departure end of runway, or minimum climb of 381'/NM to 5000' for all other courses.					
Rwy 10, climb on a heading between 091° counter-clockwise to 281° from departure end of runway, or minimum climb of 390'/NM to 4900' for all other courses.					
Rwy 28, climb on a heading between 260° clockwise to 101° from departure end of runway, or minimum climb of 323'/NM to 4800' for all other courses.					
Rwy 26, climb on a heading between 255° clockwise to 078° from departure end of runway, or minimum climb of 311'/NM to 4800' for all other courses.					
FOR FILING AS ALTERNATE					
Precision			Non-Precision		
A					
B	600-2		800-2		
C					
D					

CHANGES: Notes, usable lengths, Rwy 26 VASI removed.

© JEPPESEN, 2001, 2010. ALL RIGHTS RESERVED.

TJSJ/SJU

JEPPESEN SAN JUAN, PUERTO RICO
 25 JUL 08 (10-9B) Eff 31 Jul LUIS MUNOZ MARIN INTL

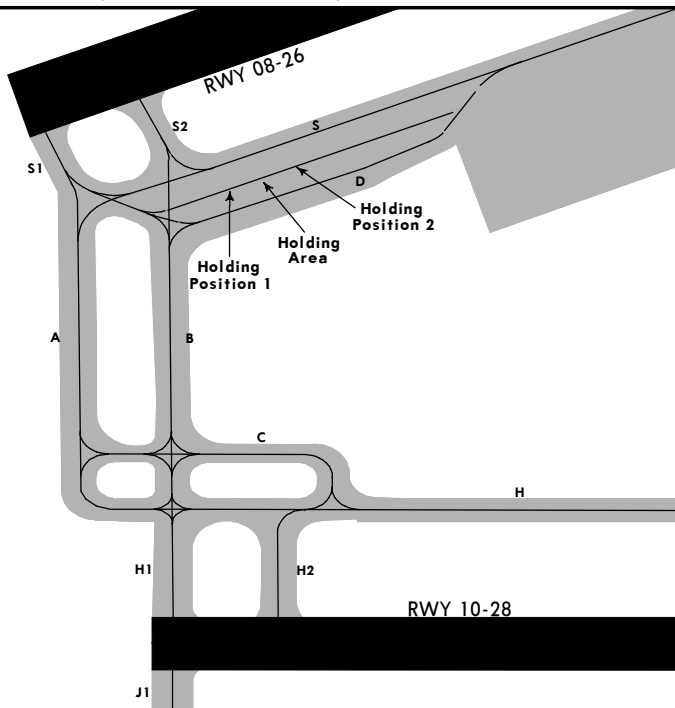
TAXIWAY RESTRICTIONS

- Taxiway D:** Max aircraft size ATR-72. No taxiing when aircraft moving on holding area.
- Taxiway S:** Max aircraft size B-747-400 when holding area not used. Max aircraft size B-767 when holding area used, no taxiing when aircraft moving on holding area.
- Taxiway H:** Max aircraft size B-747-400, not available for large aircraft taxiing to Runway 08 when Runway 10 in use for landing.
- Taxiway C:** Max aircraft size B-747-400, available for South-North movements when Runway 10 in use for landing.
- Holding Area:** Max aircraft size B-767, no movement permitted when other aircraft are using taxiway S or taxiway D, aircraft on taxiway S and taxiway D must be fixed objects when aircraft taxiing on holding area, taxilane separation criteria applies.
- Taxiway B (East Bridge):** Max aircraft size B-747-700. Taxiway B available only for North-South movements, not operational when Rwy 08 in use for landing.
- Taxiway A (West Bridge):** Max aircraft size B-747-400. Taxiway A available only for South-North movements, not operational when Rwy 10 in use for landing.
- Taxiway E:** Max aircraft size B-747-400 available for south-north movements when Rwy 10 in use for landing.

TAXIWAY HOLDING POSITION DURING EAST OPERATIONS

- Background:** Occasionally there is the need for aircraft to hold on the ground prior to departure for operational reasons. To avoid unnecessary delays to those aircraft in sequence ready to depart, two holding spots have been created and depicted near the approach end of Runway 08.
- Procedure:** If a pilot believes there will be the need to hold for a brief period of time before departure, inform ATC of intentions prior to reaching the large red square painted on Sierra Taxiway indicating "TO HLDG PSNS". Once ATC instructs the pilot to one of the two holding spots, follow the centerline and proceed to the holding spot facing west. These holding spots are depicted by two additional red squares painted on the ground named "HLDG PSN 1" and "HLDG PSN 2".
- If for any reason the aircraft needs to hold facing another direction, advise ATC promptly. It is important to understand that aircraft holding at these spots are to remain fixed objects to allow the safe movement and proper clearance for aircraft taxiing on either side of the holding area (S and D taxiways). Prior to any movement in this area, request instructions from ATC.

Description: TO HLDG PSNS: Large red square painted approximately 1000 ft. prior to the approach end of Runway 08 with white letters indicating "TO HLDG PSNS".
 HLDG PSN 1: Red square with white letters indicating "HLDG PSN 1" abeam Yankee intersection near the approach end of Runway 08.
 HLDG PSN 2: Red square with white letters indicating "HLDG PSN 2".

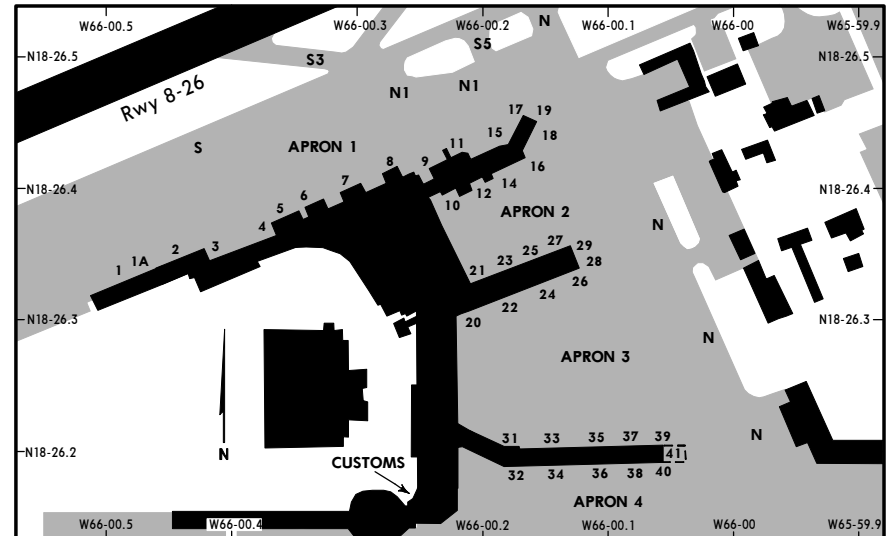


CHANGES: Taxiway J1 added.

© JEPPESEN, 2002, 2008. ALL RIGHTS RESERVED.

TJSJ/SJU

JEPPESEN SAN JUAN, PUERTO RICO
 25 JUL 08 (10-9C) Eff 31 Jul LUIS MUNOZ MARIN INTL



PARKING GATE COORDINATES

GATE No.	COORDINATES	GATE No.	COORDINATES
1, 1A	N18 26.3 W066 00.5	31, 32	N18 26.2 W066 00.2
2 thru 5	N18 26.4 W066 00.4	33 thru 41	N18 26.2 W066 00.1
6 thru 8	N18 26.4 W066 00.3		
9 thru 12	N18 26.4 W066 00.2		
14 thru 16	N18 26.4 W066 00.2		
17	N18 26.5 W066 00.2		
18	N18 26.4 W066 00.2		
19	N18 26.5 W066 00.2		
20 thru 23	N18 26.3 W066 00.2		
24	N18 26.3 W066 00.1		
25	N18 26.4 W066 00.2		
26	N18 26.3 W066 00.1		
27	N18 26.4 W066 00.1		
28	N18 26.3 W066 00.1		
29	N18 26.4 W066 00.1		

CHANGES: Terminal.

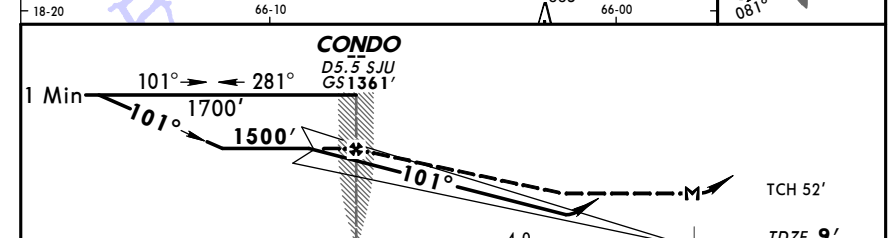
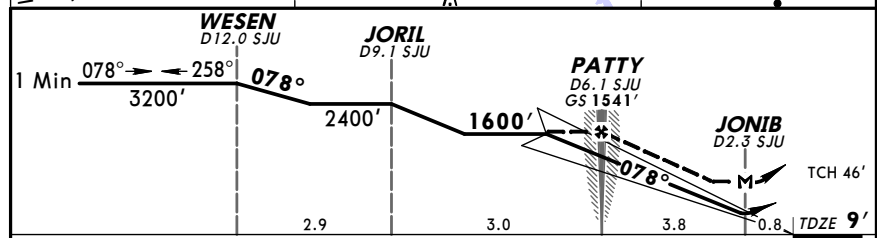
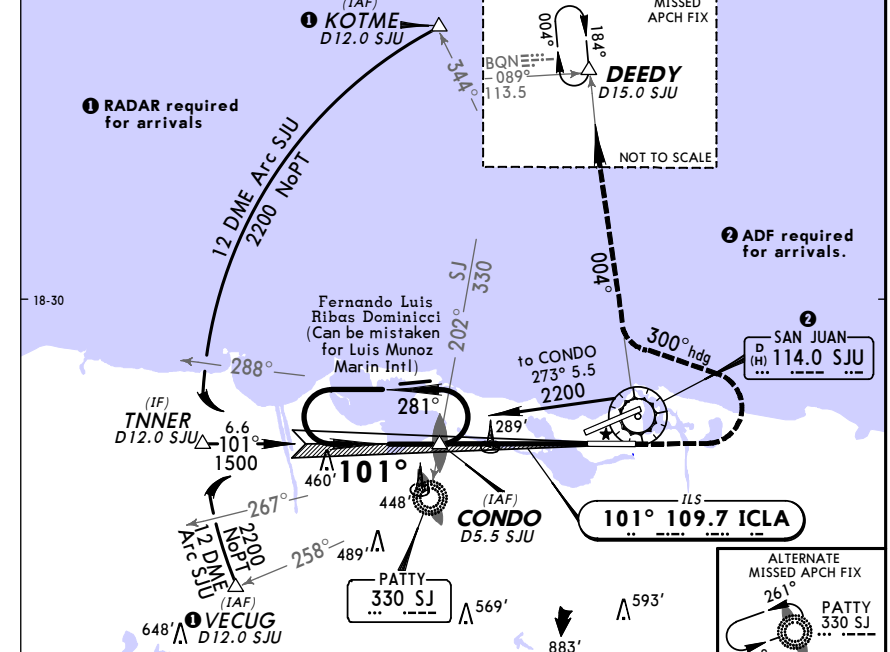
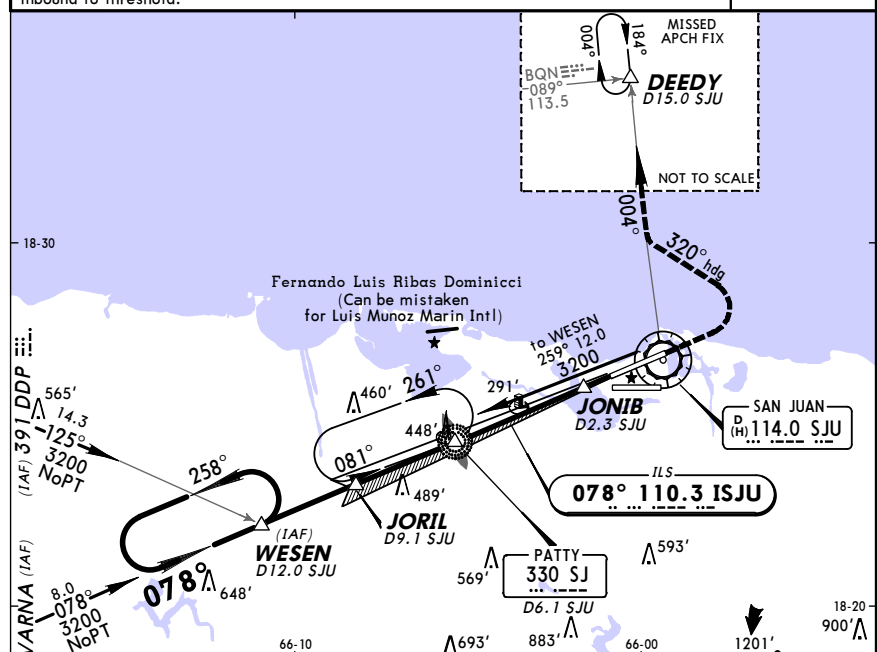
© JEPPESEN, 2002, 2008. ALL RIGHTS RESERVED.

TJSJ/SJU
 LUIS MUNOZ MARIN INTL 17 SEP 10 (11-1) **Eff 23 Sep** ILS or LOC Rwy 8

TJSJ/SJU
 LUIS MUNOZ MARIN INTL 17 SEP 10 (11-2) **Eff 23 Sep** ILS or LOC Rwy 10

D-ATIS 125.8		SAN JUAN Approach (R) North & East 120.9		SAN JUAN Tower Southwest & West 119.4		SAN JUAN Tower 132.05		Ground 121.9	
LOC ISJU 110.3	Final Apch Crs 078°	GS PATTY 1541' (1532')	ILS DA(H) 311' (302')	Apt Elev 9'		2800'			
MISSED APCH: Climb to 2000', then climbing LEFT turn to 3000' on heading 320° and outbound SJU VOR R-004 to DEEDY INT/D15.0 SJU and hold.									
Alt Set: INCHES Trans level: FL 180 Trans alt: 18000'									
1. DME required. 2. VGS1 and ILS glidepath not coincident. 3. ILS unusable from 0.8 NM inbound to threshold.									
MSA SJ LOM									

D-ATIS 125.8		SAN JUAN Approach (R) North & East 120.9		SAN JUAN Tower Southwest & West 119.4		SAN JUAN Tower 132.05		Ground 121.9	
LOC ICLA 109.7	Final Apch Crs 101°	GS CONDO 1361' (1352')	ILS DA(H) 244' (235')	Apt Elev 9'		2800'			
MISSED APCH: Climb to 1900', then climbing LEFT turn to 3000' heading 300° and outbound SJU VOR R-004 to DEEDY INT/D15.0 SJU and hold.									
Alt Set: INCHES Trans level: FL 180 Trans alt: 18000'									
MSA SJ LOM									



Gnd speed-Kts	70	90	100	120	140	160	MALSR		2000'	3000'	320°	SJU
GS	3.00°	377	484	538	646	753	861	PAP1	↑	←	hdg	114.0
MAP at JONIB or PATTY to MAP	3.8	3:15	2:32	2:17	1:54	1:38	1:26					

Gnd speed-Kts	70	90	100	120	140	160	MALSR		1900'	3000'	300°	SJU
GS	3.00°	377	484	538	646	753	861	PAP1-L	↑	←	hdg	114.0
CONDO to MAP	4.0	3:26	2:40	2:24	2:00	1:43	1:30					

STRAIGHT-IN LANDING RWY 8				LOC (GS out)			CIRCLE-TO-LAND		
DA(H) 311' (302')				MDA(H) 560' (551')			MDA(H)		
FULL		RAIL or ALS out		RAIL out	ALS out	Max Kts	MDA(H)		
A				1/2	3/4	90	600' (591') - 1		
B	1/2	1		1	1 1/2	120	600' (591') - 1 1/2		
C				1 1/4	1 3/4	140	600' (591') - 2		
D						165	600' (591') - 2		

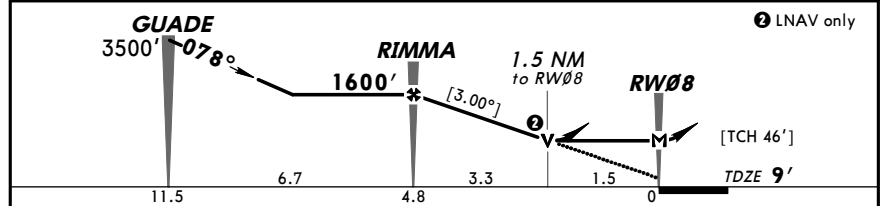
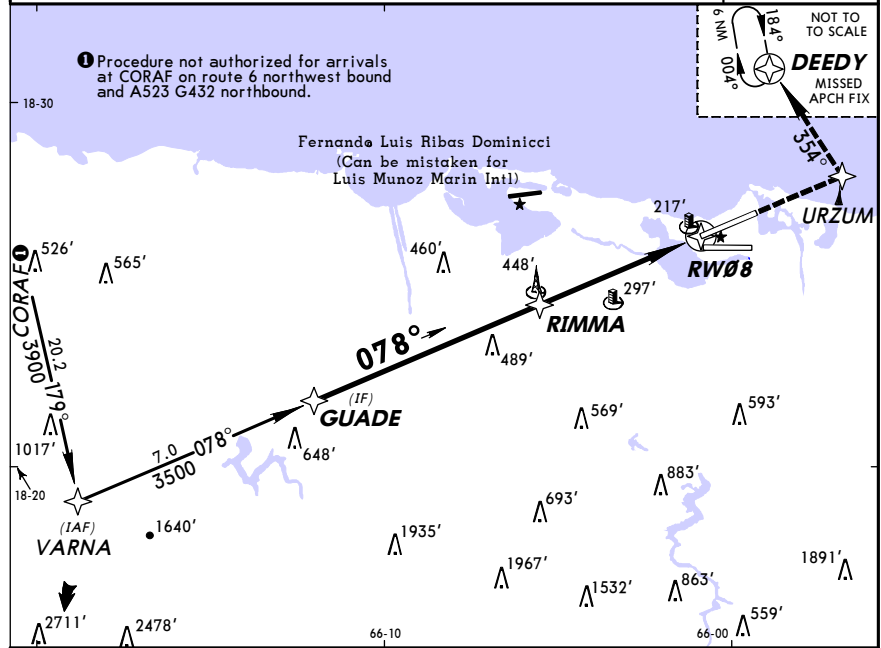
STRAIGHT-IN LANDING RWY 10				LOC (GS out)			CIRCLE-TO-LAND		
DA(H) 244' (235')				MDA(H) 600' (591')			MDA(H)		
FULL		RAIL or ALS out		RAIL out	ALS out	Max Kts	MDA(H)		
A				1		90	600' (591') - 1		
B	3/4			1 1/2		120	600' (591') - 1 1/2		
C				1 3/4		140	600' (591') - 2		
D						165	600' (591') - 2		

TERPS AMEND 16 23 SEP 2010

TERPS AMEND 5 23 SEP 2010

TJSJ/SJU **JEPPESEN SAN JUAN, PUERTO RICO**
LUIS MUNOZ MARIN INTL 17 SEP 10 (12-1) **Eff 23 Sep** RNAV (GPS) Rwy 8

D-ATIS	SAN JUAN Approach (R)		SAN JUAN Tower		Ground
125.8	North & East 120.9	Southwest & West 119.4	132.05		121.9
RNAV	Final Apch Crs 078°	Minimum Alt RIMMA 1600' (1591')	LNAV/VNAV DA(H) 530' (521')	Apt Elev 9'	9'
MISSED APCH: Climb to 3000' direct URZUM and on track 354° to DEEDY and hold.					5100'
Alt Set: INCHES Trans level: FL 180 Trans alt: 18000' 1. For uncompensated Baro-VNAV systems, LNAV/VNAV not authorized below -15°C (5°F) or above 48°C (118°F). 2. DME/DME RNP-0.30 not authorized. 3. VGSI and RNAV glidepath not coincident. 4. WAAS VNAV not authorized.					



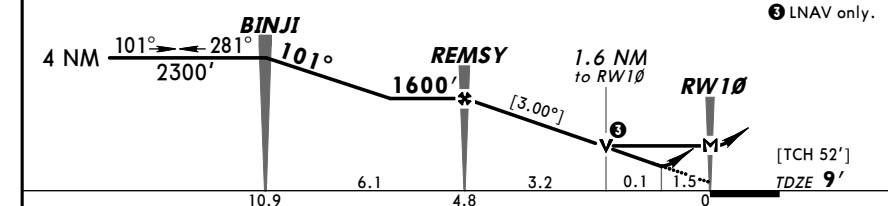
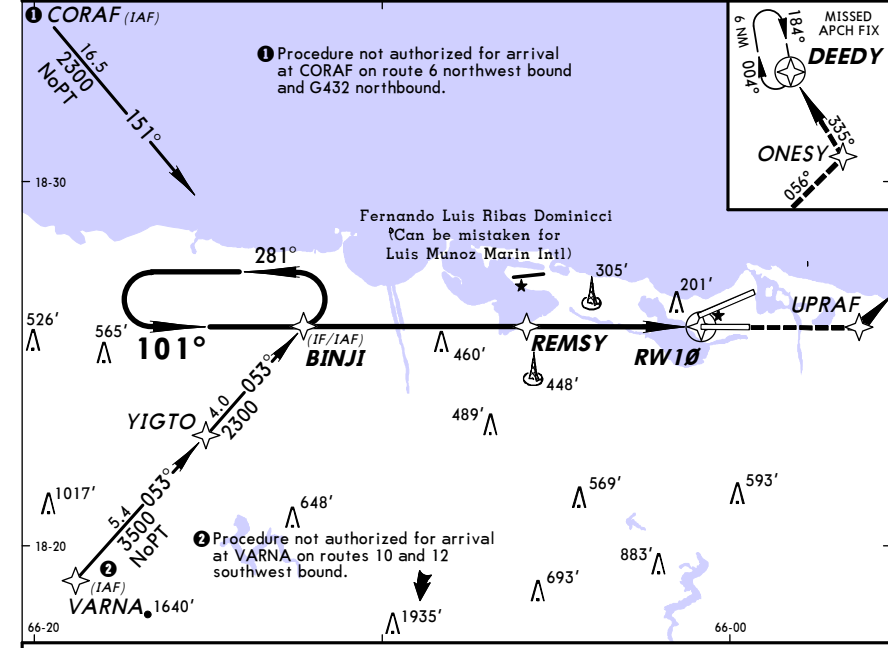
Gnd speed-Kts	70	90	100	120	140	160	MALSRL	3000'	D	URZUM
Descent angle [3.00°]	372	478	531	637	743	849				

STRAIGHT-IN LANDING RWY 8				CIRCLE-TO-LAND	
LNAV/VNAV DA(H) 530' (521')		LNAV MDA(H) 560' (551')		Max Kts	MDA(H)
RAIL or ALS out		RAIL out	ALS out		
A		1/2	3/4	90	600'(591')-1
B				120	
C	1 1/4	1 3/4	1	140	600'(591')-1 1/2
D		1 1/4	1 3/4	165	600'(591')-2

TERPS AMEND 1 - 23 SEP 2010
 CHANGES: Procedure.

TJSJ/SJU **JEPPESEN SAN JUAN, PUERTO RICO**
LUIS MUNOZ MARIN INTL 17 SEP 10 (12-2) **Eff 23 Sep** RNAV (GPS) Rwy 10

D-ATIS	SAN JUAN Approach (R)		SAN JUAN Tower		Ground
125.8	North & East 120.9	Southwest & West 119.4	132.05		121.9
RNAV	Final Apch Crs 101°	Minimum Alt REMSY 1600' (1591')	LNAV/VNAV DA(H) 549' (540')	Apt Elev 9'	9'
MISSED APCH: Climb to 3000' direct UPRAF and on track 335° to ONESY and on track 056° to DEEDY and hold.					5100'
Alt Set: INCHES Trans level: FL 180 Trans alt: 18000' 1. For uncompensated Baro-VNAV systems, LNAV/VNAV not authorized below -15°C (5°F) or above 48°C (118°F). 2. DME/DME RNP-0.30 not authorized. 3. WAAS VNAV not authorized.					



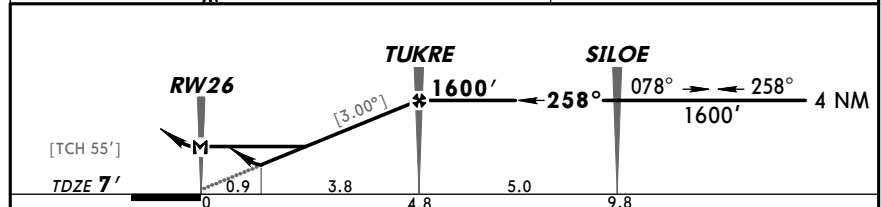
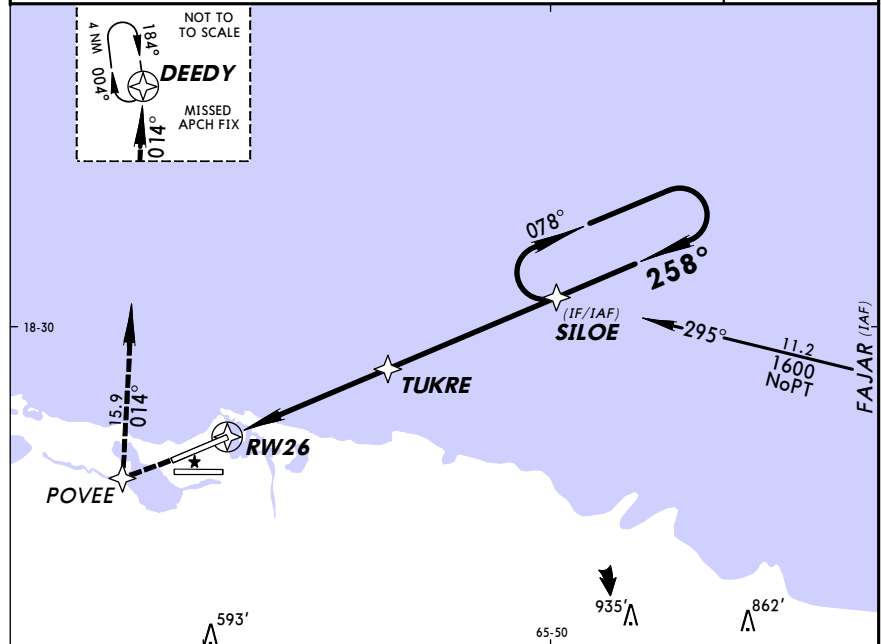
Gnd speed-Kts	70	90	100	120	140	160	PAPIL	3000'	D	UPRAF
Descent angle [3.00°]	372	478	531	637	743	849				

STRAIGHT-IN LANDING RWY 10				CIRCLE-TO-LAND	
LNAV/VNAV DA(H) 549' (540')		LNAV MDA(H) 560' (551')		Max Kts	MDA(H)
RAIL or ALS out		RAIL out	ALS out		
A		1		90	600'(591')-1
B				120	
C	2	1 1/2		140	600'(591')-1 1/2
D		1 3/4		165	600'(591')-2

TERPS AMEND 1 - 23 SEP 2010
 CHANGES: Procedure.

TJSJ/SJU **JEPPESEN SAN JUAN, PUERTO RICO**
LUIS MUNOZ MARIN INTL 15 AUG 03 (12-3) **RNAV (GPS) Rwy 26**

D-ATIS	SAN JUAN Approach (R)		SAN JUAN Tower		Ground
125.8	North & East	Southwest & West	132.05		121.9
120.9	119.4				
RNAV	Final Apch Crs	Minimum Alt	LNAV/VNAV DA(H)	Apt Elev	9'
	258°	1600' (1593')	360' (353')	TDZE	7'
MISSED APCH: Climb to 3000' direct POVEE and then RIGHT turn via 014° track to DEEDY and hold.					5100' MSA RW26
Alt Set: INCHES Trans level: FL 180 Trans alt: 18000' 1. Baro-VNAV not authorized below -15°C (5°F). 2. GPS or RNP-0.3 required. 3. DME/DME RNP-0.3 not authorized. 4. VGSI and descent angles not coincident. 5. WAAS VNAV not authorized.					

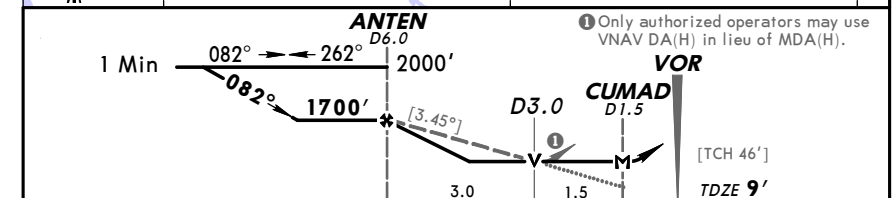


Gnd speed-Kts	70	90	100	120	140	160		REIL	3000'	→	POVEE
Descent angle [3.00°]	372	478	531	637	743	849		VASI-L			
MAP at RW26											

STRAIGHT-IN LANDING RWY 26			CIRCLE-TO-LAND		
LNAV/VNAV		LNAV		Max Kts	
DA(H) 360' (353')		MDA(H) 400' (393')		MDA(H)	
A				90	560' (551') - 1 1/4
B		1		120	
C	1 1/4			140	560' (551') - 1 1/2
D		1 1/4		165	560' (551') - 2

TJSJ/SJU **JEPPESEN SAN JUAN, PUERTO RICO**
LUIS MUNOZ MARIN INTL 16 OCT 09 (13-1) **Eff 22 Oct** **VOR Rwy 8**

D-ATIS	SAN JUAN Approach (R)		SAN JUAN Tower		Ground
125.8	North & East	Southwest & West	132.05		121.9
120.9	119.4				
VOR SJU	Final Apch Crs	Minimum Alt	MDA(H)	Apt Elev	9'
114.0	082°	1700' (1691')	560' (551')	TDZE	9'
MISSED APCH: Climb to 2000', then climbing LEFT turn to 3000' via heading 320° and SJU VOR R-004 outbound to DEEDY INT/D15.0 and hold.					2200' 100° → ← 280° 5100' MSA SJU VOR
Alt Set: INCHES Trans level: FL 180 Trans alt: 18000' 1. ADF or DME required. 2. VGSI and descent angles not coincident.					



Gnd speed-Kts	70	90	100	120	140	160		MALS R	2000'	3000'	hdg
Descent angle [3.45°]	427	549	611	733	855	977		PAPI			320°
MAP at CUMAD or ANTEN to MAP	4.5	3:51	3:00	2:42	2:15	1:56	1:41				

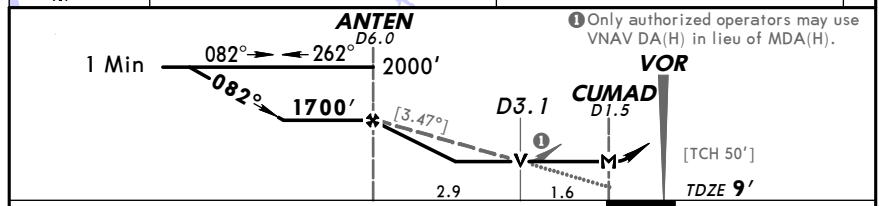
STRAIGHT-IN LANDING RWY 8			CIRCLE-TO-LAND		
LNAV/VNAV		LNAV		Max Kts	
MDA(H) 560' (551')		MDA(H)		MDA(H)	
A				90	600' (591') - 1
B	1/2	3/4	1	120	
C	1		1 1/2	140	600' (591') - 1 1/2
D	1 1/4		1 3/4	165	600' (591') - 2

TJSJ/SJU
 LUIS MUNOZ MARIN INTL 16 OCT 09 (13-2) Eff 22 Oct
JEPPESEN SAN JUAN, PUERTO RICO
 VOR Rwy 10

D-ATIS	SAN JUAN Approach (R)		SAN JUAN Tower		Ground
125.8	North & East 120.9	Southwest & West 119.4	132.05		121.9
VOR SJU	Final Apch Crs	Minimum Alt ANTEN	MDA(H)	Apt Elev 9'	2200' 100° ← → 280° 5100'
114.0	082°	1700' (1691')	560' (551')	TDZE 9'	

MISSED APCH: Climb to 2000', then climbing LEFT turn to 3000' via heading 320° and SJU VOR R-004 outbound to DEEDY INT/D15.0 and hold.

Alt Set: INCHES Trans level: FL 180 Trans alt: 18000'
 1. ADF or DME required. 2. VGSI and descent angles not coincident.



Gnd speed-Kts	70	90	100	120	140	160
Descent angle [3.47°]	430	553	614	737	860	983
MAP at CUMAD or ANTEN to MAP	4.5	3:51	3:00	2:42	2:15	1:56

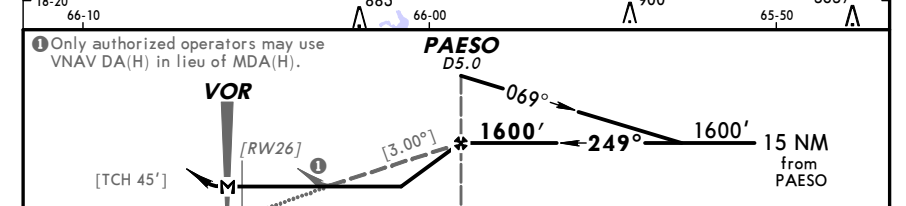
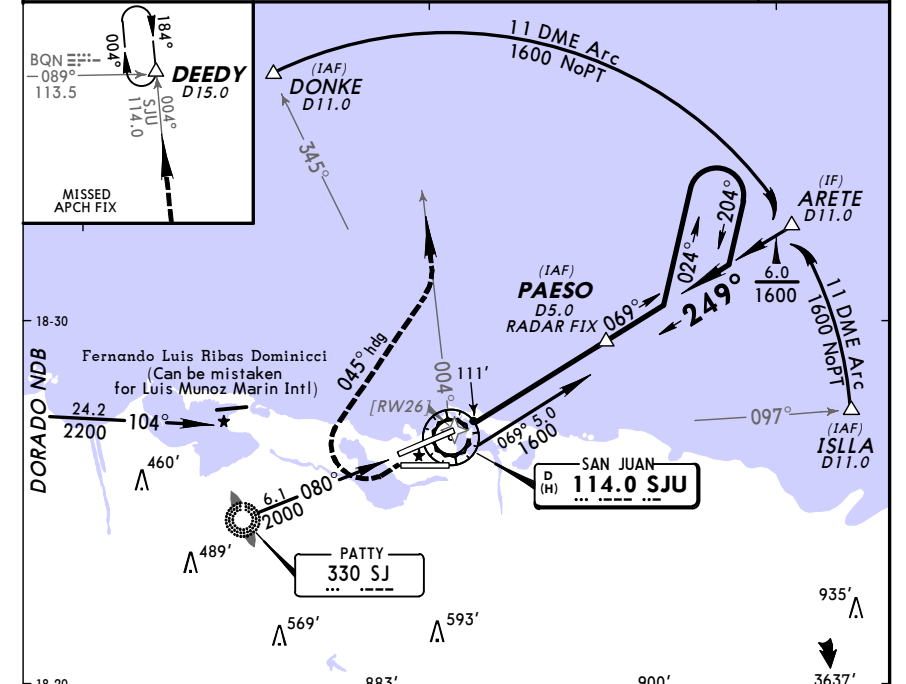
STRAIGHT-IN LANDING RWY 10		CIRCLE-TO-LAND	
MDA(H) 560' (551')		MDA(H)	
Max Kts		90	600' (591') -1
120		140	600' (591') -1½
140		165	600' (591') -2

TJSJ/SJU
 LUIS MUNOZ MARIN INTL 16 OCT 09 (13-3) Eff 22 Oct
JEPPESEN SAN JUAN, PUERTO RICO
 VOR Rwy 26

D-ATIS	SAN JUAN Approach (R)		SAN JUAN Tower		Ground
125.8	North & East 120.9	Southwest & West 119.4	132.05		121.9
VOR SJU	Final Apch Crs	Minimum Alt PAESO	MDA(H)	Apt Elev 9'	2200' 100° ← → 280° 5100'
114.0	249°	1600' (1593')	440' (433')	TDZE 7'	

MISSED APCH: Climb to 2000', then climbing RIGHT turn to 3000' via heading 045° and SJU VOR R-004 outbound to DEEDY INT/D15.0 and hold.

Alt Set: INCHES Trans level: FL 180 Trans alt: 18000'
 1. DME or RADAR required. 2. Visibility reduction by helicopters not authorized.

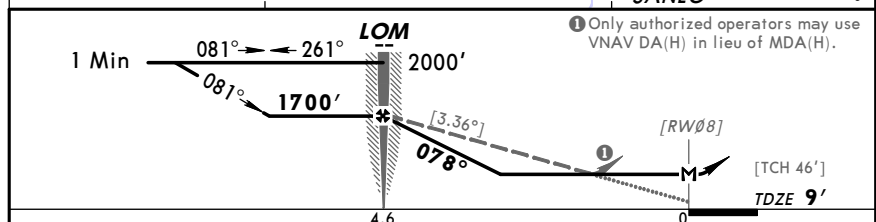
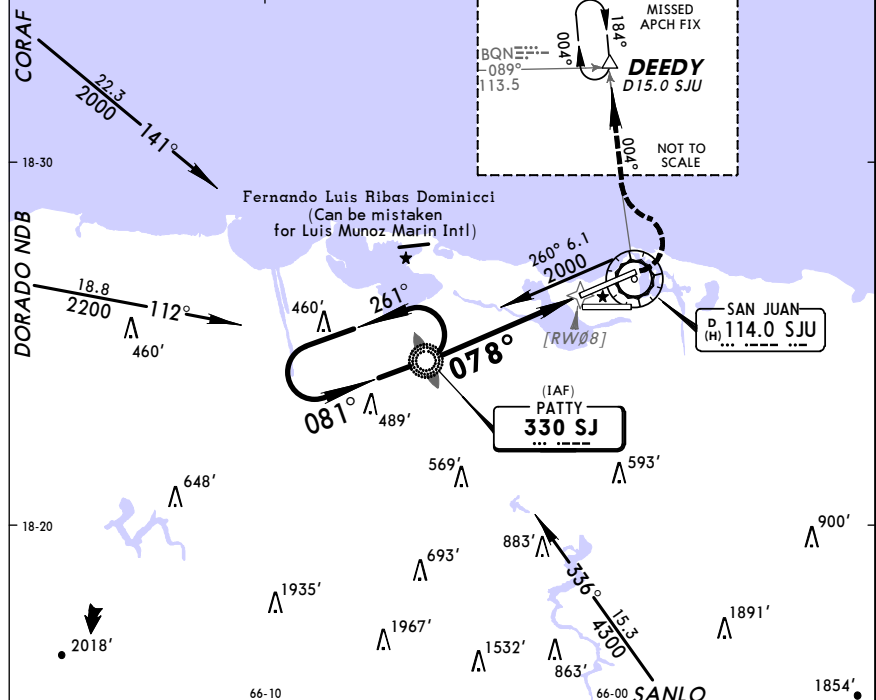


Gnd speed-Kts	70	90	100	120	140	160
Descent angle [3.00°]	372	478	531	637	743	849
MAP at VOR						

STRAIGHT-IN LANDING RWY 26		CIRCLE-TO-LAND	
MDA(H) 440' (433')		MDA(H)	
Max Kts		90	600' (591') -1
120		140	600' (591') -1½
140		165	600' (591') -2

TJSJ/SJU
LUIS MUNOZ MARIN INTL 16 OCT 09 (16-1) **Eff 22 Oct**
JEPPESEN SAN JUAN, PUERTO RICO
NDB Rwy 8

D-ATIS 125.8		SAN JUAN Approach (R) North & East 120.9		SAN JUAN Tower Southwest & West 119.4		SAN JUAN Tower 132.05		Ground 121.9	
LOM SJ 330	Final Apch Crs 078°	Minimum Alt LOM 1700' (1691')	MDA(H) 600' (591')	Apt Elev 9' TDZE 9'	2000' 100° ← → 280° 5100'				
MISSED APCH: Climb to 2000', then climbing LEFT turn to 3000' outbound via SJU VOR R-004 to DEEDY INT/D15.0 SJU and hold. Alt Set: INCHES Trans level: FL 180 Trans alt: 18000' 1. VGSi and descent angles not coincident.									

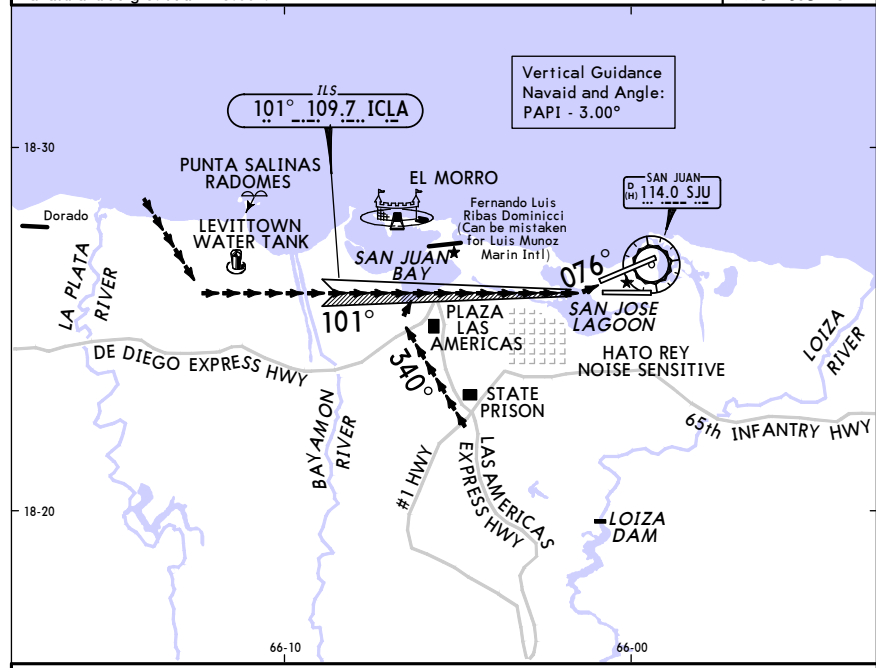


Gnd speed-Kts	70	90	100	120	140	160	MALSR	2000'	3000'	SJU	DEEDY
Descent angle	[3.36°]	416	535	595	713	832	PAPI	↑	←	via 114.0	
LOM to MAP	4.6	3:57	3:04	2:46	2:18	1:58				R-004	

STRAIGHT-IN LANDING RWY 8			CIRCLE-TO-LAND		
MDA(H) 600' (591')			MDA(H)		
RAIL out		ALS out	Max Kts.		
A	3/4	1	90	600' (591')-1	
B			120		
C	1	1 1/2	140	600' (591')-1 1/2	
D	1 1/2	1 3/4	165	600' (591')-2	

TJSJ/SJU
LUIS MUNOZ MARIN INTL 1 MAY 09 (19-1) **Eff 7 May**
JEPPESEN SAN JUAN, PUERTO RICO
LAGOON VISUAL Rwy 8

D-ATIS 125.8		SAN JUAN Approach (R) North & East 120.9		SAN JUAN Tower Southwest & West 119.4		SAN JUAN Tower 132.05		Ground 121.9	
NAVAIDS- Refer to Planview	Final Apch Crs Refer to Planview	No FAF	CEIL-VIS 2000'-5	Apt Elev 9' TDZE 9'	2000' 100° ← → 280° 5100'				
MISSED APCH: No Missed Approach procedure. Alt Set: INCHES Trans level: FL 180 Trans alt: 18000' 1. RADAR required. 2. Procedure not authorized at night. 3. Vertical Guidance Navaid and Angle: PAPI - 3.00°.									



LAGOON VISUAL APPROACH RUNWAY 8

When cleared for the Lagoon Visual Runway 8 Approach aircraft will proceed visually to intercept and fly the Runway 10 final approach course until the west end of the San Jose Lagoon, then make left turn to land Runway 8.

MALSR		No Missed Approach Procedure
PAPI		

WEATHER MINIMUMS	
Ceiling 2000' Vis 5	

