

**General Info**

Mexico City, MEX

N 19° 26.2' W 99° 04.3' Mag Var: 6.6°E

Elevation: 7316'

Public, IFR, Control Tower, Rotating Beacon, Customs

Fuel: 100LL, Jet A-1

Repairs: Major Airframe, Major Engine

Time Zone Info: Mexico City Time GMT-6:00 uses DST

**Runway Info**

Runway 05L-23R 13002' x 148' asphalt

Runway 05R-23L 13074' x 148' asphalt

Runway 05L (53.3°M) TDZE 7292'

Lights: Edge, REIL

Displaced Threshold Distance 1591'

Runway 05R (53.4°M) TDZE 7290'

Lights: Edge, ALS

Displaced Threshold Distance 1493'

Runway 23L (233.4°M) TDZE 7295'

Lights: Edge, ALS

Displaced Threshold Distance 262'

Runway 23R (233.3°M) TDZE 7294'

Lights: Edge, ALS

Displaced Threshold Distance 1660'

**Communications Info**ATIS **127.65**Mexico Tower **118.7**Mexico Tower **118.55**Mexico Ground Control **121.85**Mexico Ground Control **121.0**Mexico City Ramp/Taxi Control **121.85**Mexico City Ramp/Taxi Control **134.65**Mexico City Ramp/Taxi Control **134.625** SecondaryMexico Clearance Delivery **122.1**Mexico Approach Control **121.2**Mexico Arrival Control **129.6**Mexico Departure Control **120.5**Mexico Departure Control **129.1**Mexico Unknown **120.5** Departure ServiceMexico Unknown **119.7** Arrival Service

**MMMX/MEX**

LIC BENITO JUAREZ INTL

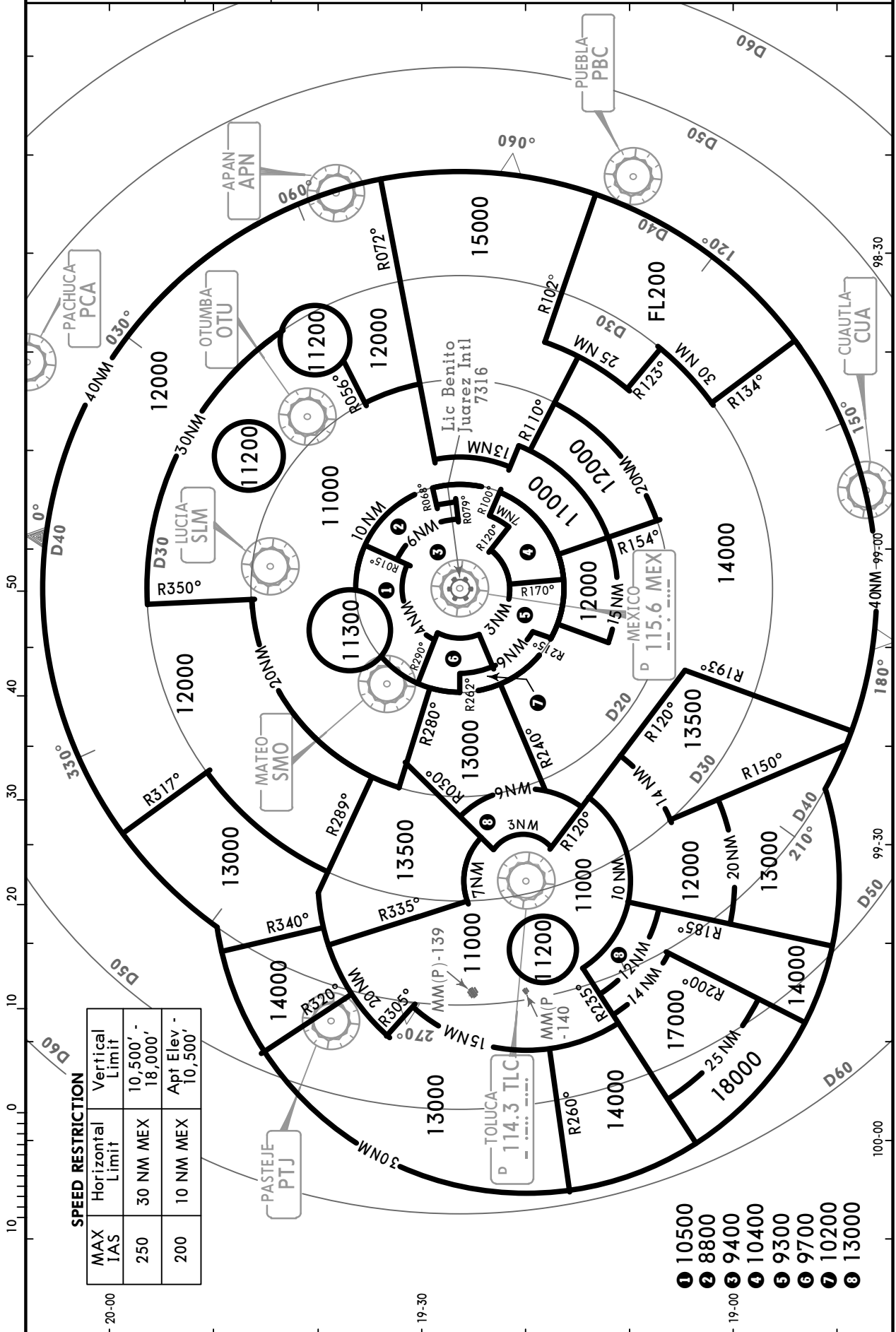


4 FEB 11  
Eff 10 Feb **10-1R**

**MEXICO CITY, MEXICO**

**RADAR MINIMUM ALTITUDES**

MEXICO Terminal (R)	Apt Elev	Alt Set: MB (IN on req)	Trans level: FL 195	Trans alt: 18500'
129.6	<b>7316'</b>	1. These MVAs are the lowest altitudes that can be assigned by the controller in a sector when RADAR control procedures (vectors) are applied, without affecting routes and procedures with lower minimums. 2. Numerous prohibited areas within 15 NM of airport.		



**SPEED RESTRICTION**

MAX IAS	Horizontal Limit	Vertical Limit
250	30 NM MEX	10,500' - 18,000'
200	10 NM MEX	Apt Elev - 10,500'

- ① 10500
- ② 8800
- ③ 9400
- ④ 10400
- ⑤ 9300
- ⑥ 9700
- ⑦ 10200
- ⑧ 13000

# MMM/MEX BENITO JUAREZ INTL

JEPPESSEN

# MEXICO CITY, MEXICO

4 FEB 11

10-2

Eff 10 Feb

STAR

ATIS  
127.65

Apt Elev  
7316'

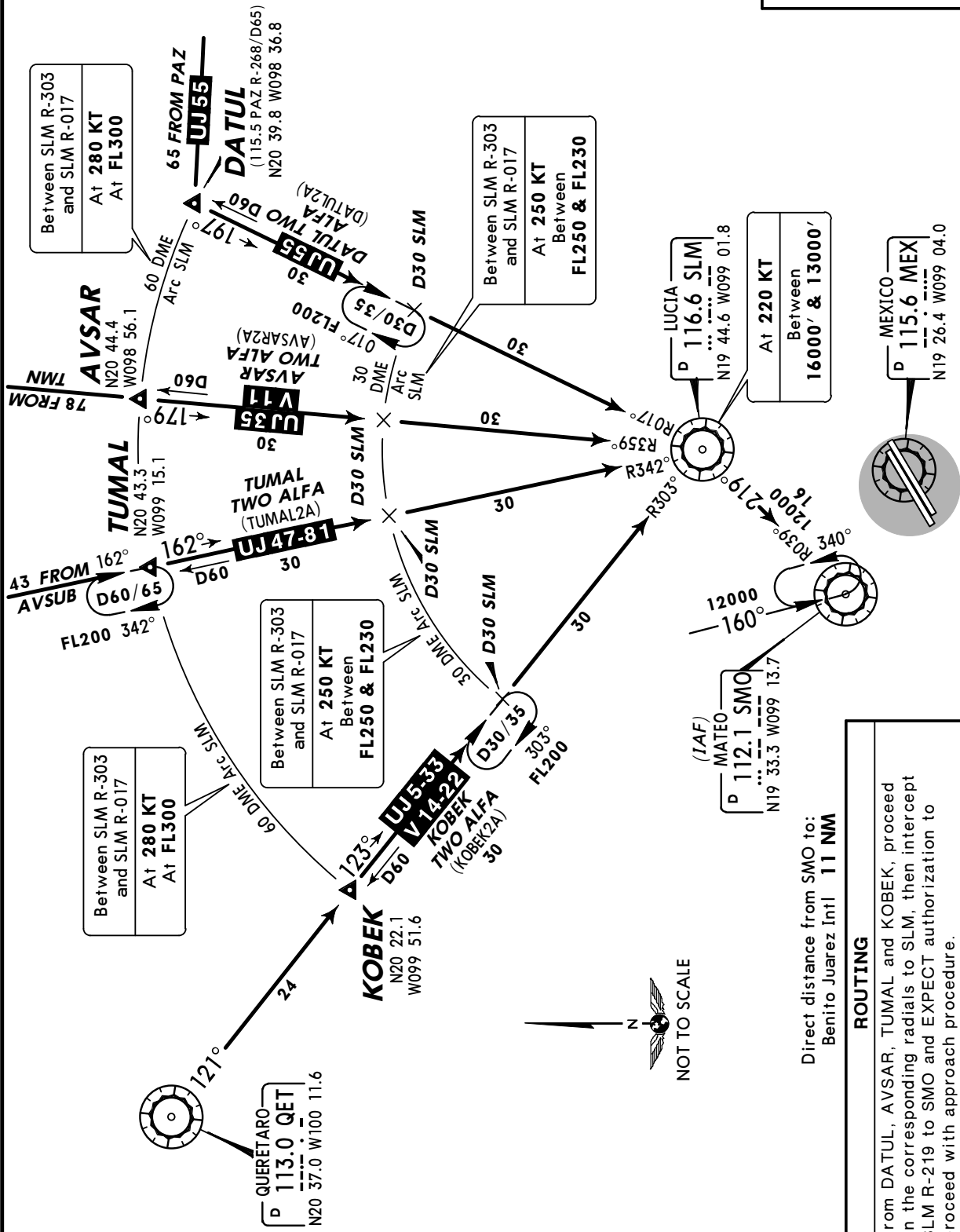
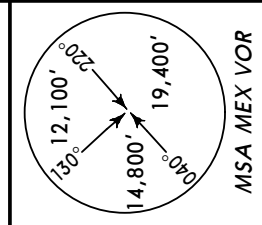
Alt Set: IN (MB on req)

Trans level: FL195 Trans alt: 18500'

1. These arrival instructions can be changed in accordance with ATC instructions by means of RADAR vectors and/or speed changes.
2. If due to aircraft performance your aircraft cannot adjust to the speed and/or altitude restrictions, please inform ATC as soon as possible so that the proper aircraft separation can be maintained.

## ARRIVALS RWYS 05L/R

AVSAR TWO ALFA (AVSAR2A)[AVSA2A],  
 DATUL TWO ALFA (DATUL2A)[DATU2A],  
 KOBEK TWO ALFA (KOBEK2A)[KOB2A],  
 TUMAL TWO ALFA (TUMAL2A)[TUMA2A]



# MMM/MEX BENITO JUAREZ INTL

**JEPPesen**

# MEXICO CITY, MEXICO

4 FEB 11

10-2A

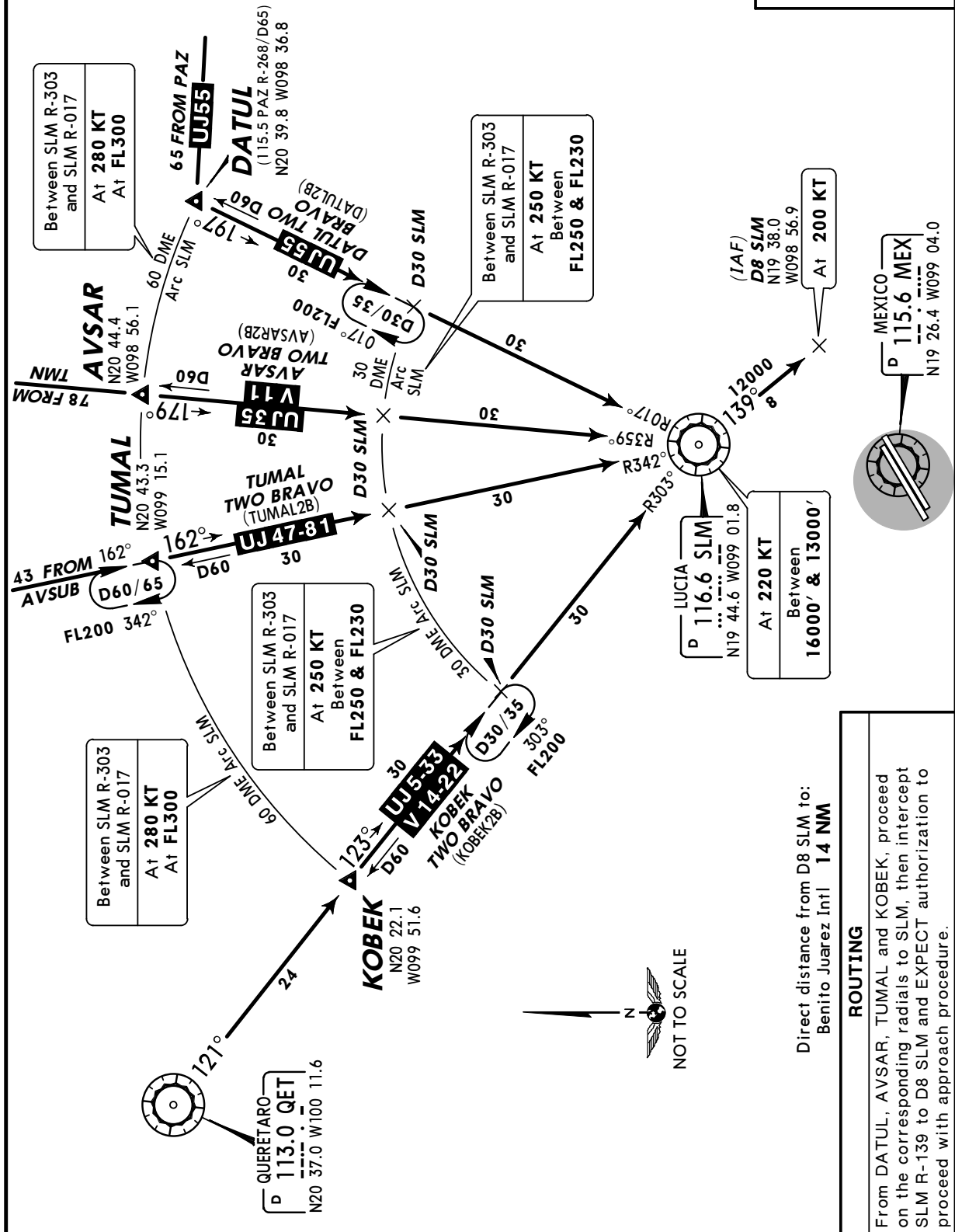
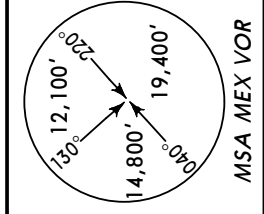
Eff 10 Feb

**STAR**

ATIS <b>127.65</b>	Apt Elev <b>7316'</b>	Alt Set: IN (MB on req) Trans level: FL195 Trans alt: 18500' 1. These arrival instructions can be changed in accordance with ATC instructions by means of RADAR vectors and/or speed changes. 2. If due to aircraft performance your aircraft cannot adjust to the speed and/or altitude restrictions, please inform ATC as soon as possible so that the proper aircraft separation can be maintained.
-----------------------	--------------------------	---

## ARRIVALS RWYS 23L/R

AVSAR TWO BRAVO (AVSAR2B) [AVSA2B],  
 DATUL TWO BRAVO (DATUL2B) [DATU2B],  
 KOBEK TWO BRAVO (KOBEK2B) [KOB2B],  
 TUMAL TWO BRAVO (TUMAL2B) [TUMA2B]



Direct distance from D8 SLM to:  
 Benito Juarez Intl **14 NM**

### ROUTING

From DATUL, AVSAR, TUMAL and KOBEK, proceed on the corresponding radials to SLM; then intercept SLM R-139 to D8 SLM and EXPECT authorization to proceed with approach procedure.

**MMM/MEX**  
**BENITO JUAREZ INTL**

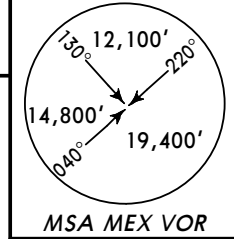
**JEPPESEN**  
4 FEB 11 **(10-2B)**

**MEXICO CITY, MEXICO**

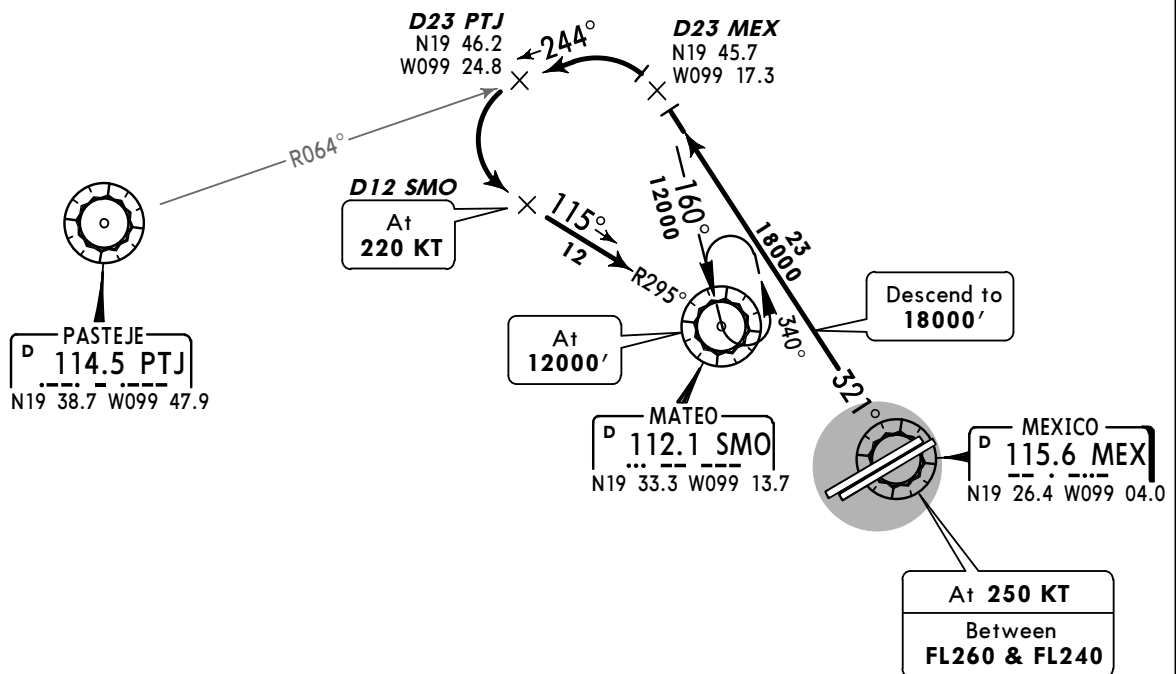
**Eff 10 Feb**

**STAR**

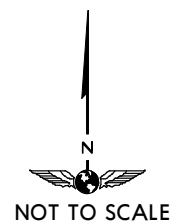
ATIS <b>127.65</b>	Apt Elev <b>7316'</b>	Alt Set: IN (MB on req) Trans level: FL195 Trans alt: 18500'
-----------------------	--------------------------	---



**ARRIVAL RWYS 05L/R**  
**MEXICO TWO ALFA (MEX2A)**



Direct distance from SMO to:  
Benito Juarez Intl **11 NM**



**ROUTING**

Follow MEX R-321 to D23 MEX descending to **18000'**. Turn LEFT and intercept PTJ R-064 to D23 PTJ then turn LEFT and intercept SMO R-295 to SMO. EXPECT authorization to proceed with approach procedure.

**MMMX/MEX**  
**BENITO JUAREZ INTL**

**JEPPESEN**  
4 FEB 11 **10-2C**

**MEXICO CITY, MEXICO**

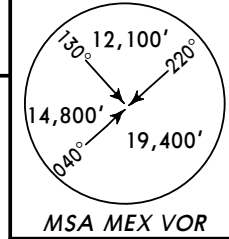
**Eff 10 Feb**

**STAR**

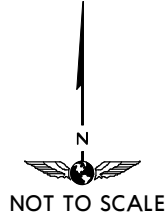
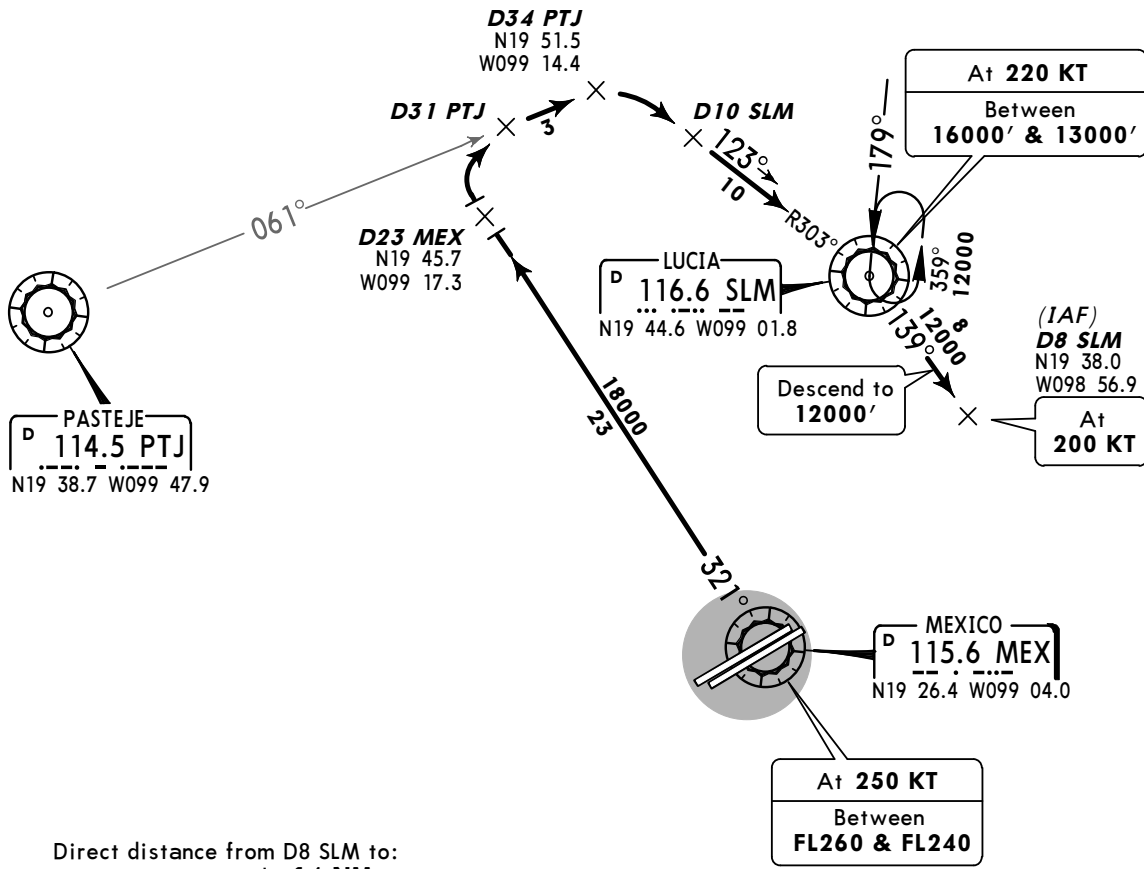
ATIS  
**127.65**

Apt Elev  
**7316'**

Alt Set: IN (MB on req)  
Trans level: FL195 Trans alt: 18500'



**ARRIVAL RWYS 23L/R**  
**MEXICO TWO BRAVO (MEX2B)**



**ROUTING**

Follow MEX R-321 to D23 MEX. Turn RIGHT to intercept PTJ R-061 to D34 PTJ. Turn RIGHT to intercept SLM R-303 to SLM. Follow SLM R-139 to D8 SLM and descend to **12000'** and EXPECT authorization to proceed with approach procedure.

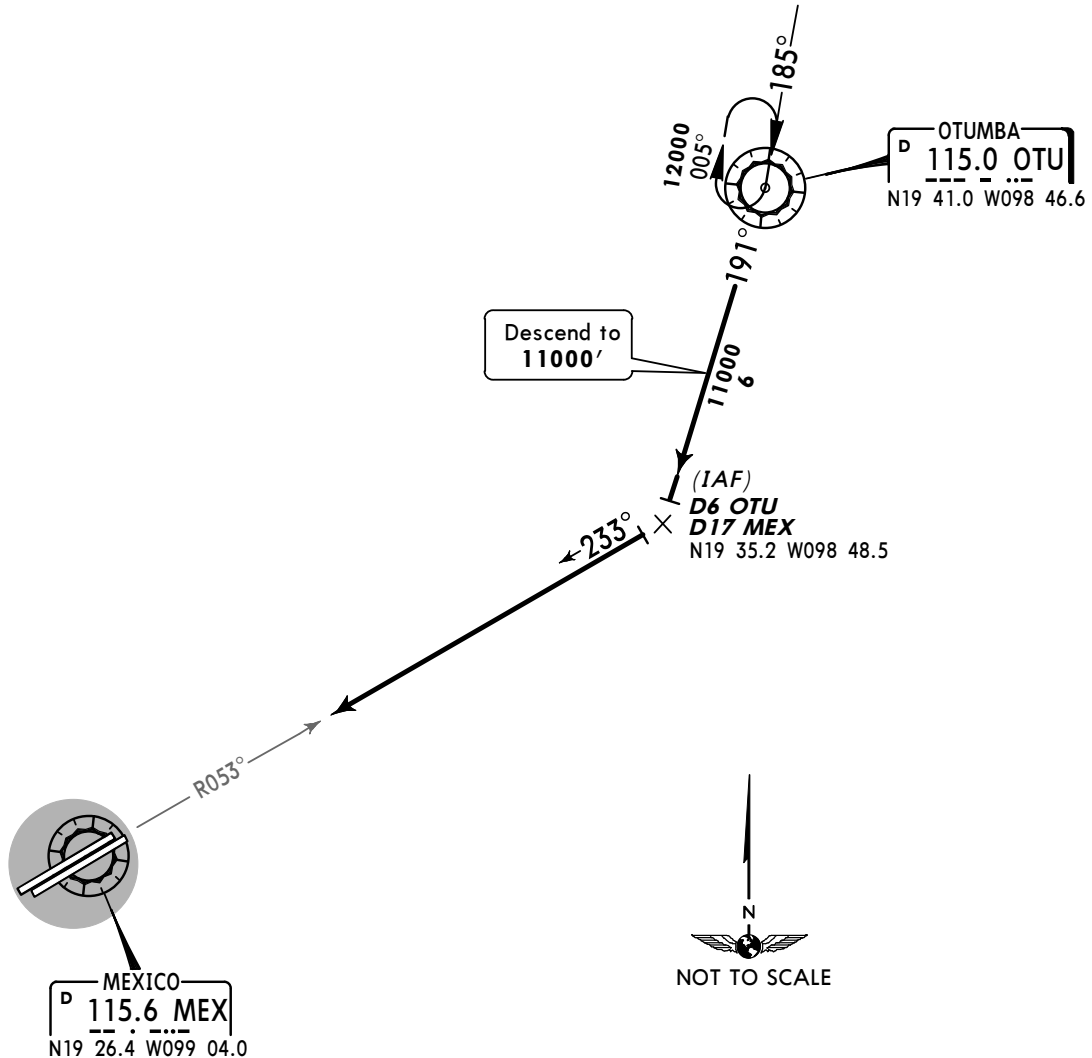
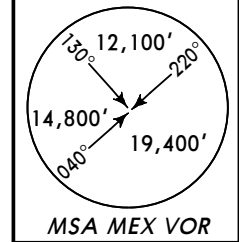
**MMMX/MEX**  
**BENITO JUAREZ INTL**

**JEPPESEN**  
18 MAR 11 **(10-2D)**

**MEXICO CITY, MEXICO**  
**STAR**

<p>ATIS <b>127.65</b></p>	<p>Apt Elev <b>7316'</b></p>	<p>Alt Set: IN (MB on req) Trans level: FL195 Trans alt: 18500'</p> <p>1. These arrival instructions can be changed in accordance with ATC instructions by means of RADAR vectors and/or speed changes.</p> <p>2. If due to aircraft performance your aircraft cannot adjust to the speed and/or altitude restrictions, please inform ATC as soon as possible so that the proper aircraft separation can be maintained.</p>
-------------------------------	----------------------------------	---

**ARRIVAL RWYS 23L/R**  
**OTUMBA FIVE (OTU5)**



**ROUTING**

Leave OTU on OTU R-191 descending to **11000'**. At D6 OTU turn RIGHT to intercept MEX R-053 to MEX and continue with approach procedure.

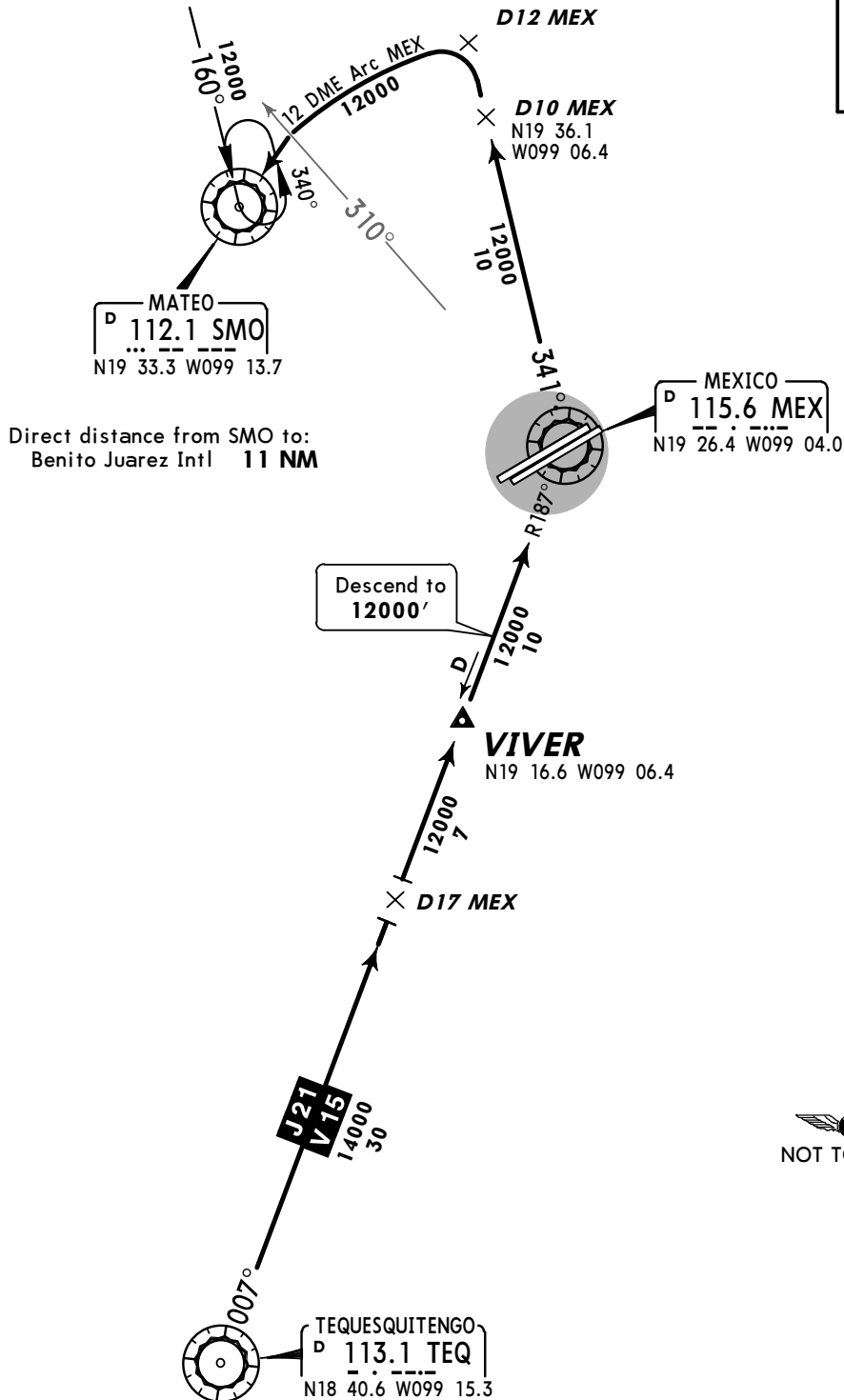
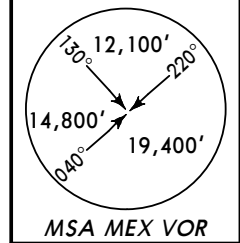
**MMM/MEX**  
**BENITO JUAREZ INTL**

**JEPPESEN**  
18 MAR 11 **(10-2E)**

**MEXICO CITY, MEXICO**  
**STAR**

ATIS <b>127.65</b>	Apt Elev <b>7316'</b>	Alt Set: IN (MB on req) Trans level: FL195 Trans alt: 18500' 1. This procedure is for turboprop operations only. 2. These arrival instructions can be changed in accordance with ATC instructions by means of RADAR vectors and/or speed changes. 3. If due to aircraft performance your aircraft cannot adjust to the speed and/or altitude restrictions, please inform ATC as soon as possible so that the proper aircraft separation can be maintained.
-----------------------	--------------------------	--

**ARRIVAL RWYS 05L/R**  
**VIVER THREE (VIVER3)**



**ROUTING**

From VIVER proceed on MEX R-187 descending to **12000'** to MEX. Turn **LEFT** to intercept MEX R-341 to D10 MEX, turn **LEFT** and proceed on the 12 DME Arc MEX to SMO and **EXPECT** authorization to proceed with approach procedure.

MMMX/MEX  
 BENITO JUAREZ INTL

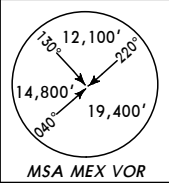
JEPPESEN  
 1 APR 11 10-3

MEXICO CITY,  
 MEXICO

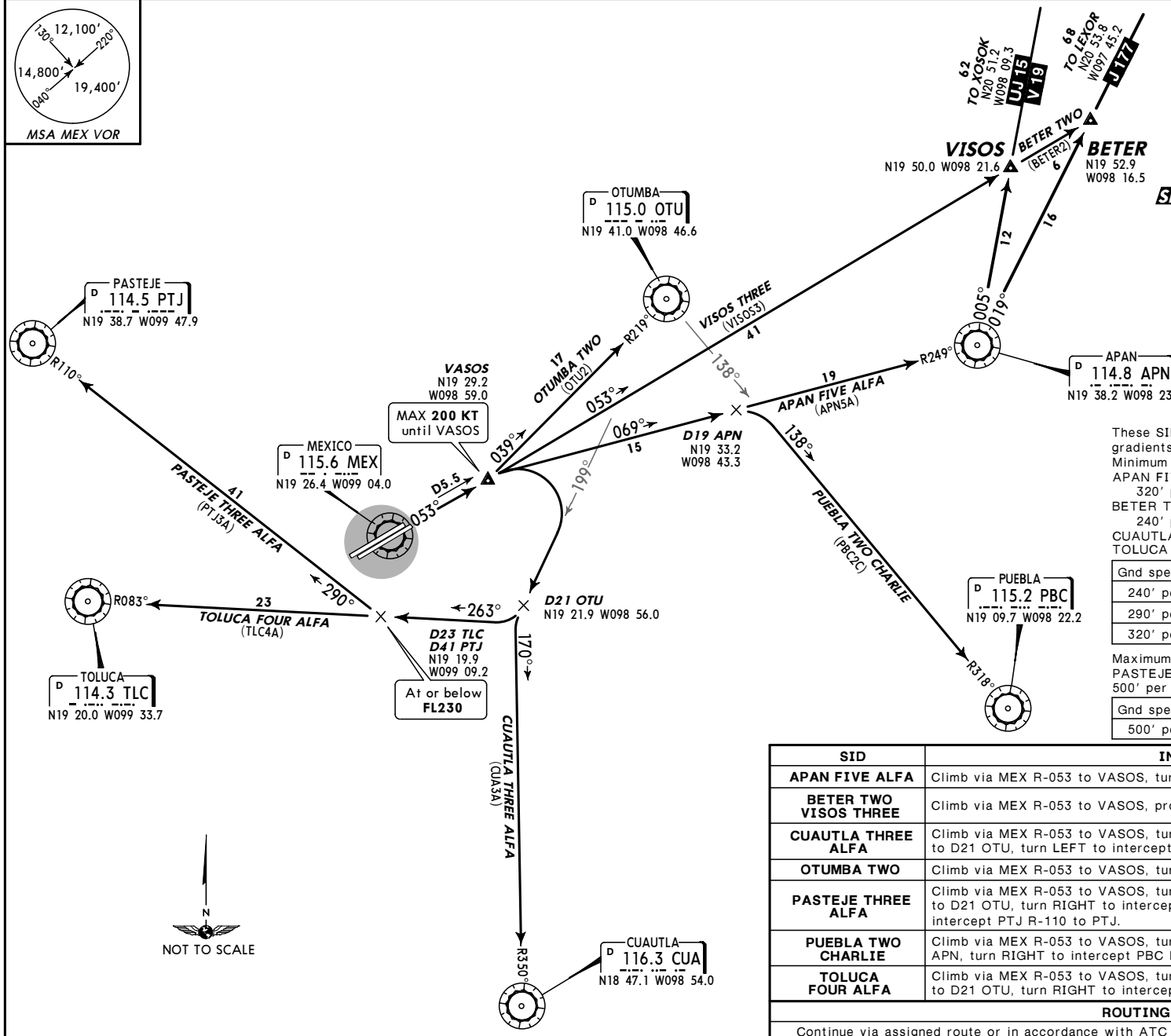
SID

MEXICO Terminal (R) (DEP) West East 129.1 120.5	Apt Elev 7316'	Trans level: FL195 Trans alt: 18500'
---	-------------------	--------------------------------------

- In case of failure of MEX and other nav aids involved in each procedure, EXPECT RADAR vectors.
- These SIDs can be changed in accordance with ATC instructions by means of RADAR vectors and/or speed changes.



**DEPARTURES RWYS 05L/R**  
 APAN FIVE ALFA (APN5A),  
 BETER TWO (BETER2),  
 CUAUTLA THREE ALFA (CUA3A),  
 OTUMBA TWO (OTU2),  
 PASTEJE THREE ALFA (PTJ3A),  
 PUEBLA TWO CHARLIE (PBC2C),  
 TOLUCA FOUR ALFA (TLC4A),  
 VISOS THREE (VISOS3)  
**SPEED: MAX 200 KT UNTIL VASOS**



These SIDs require minimum and maximum climb gradients.  
 Minimum climb gradients:  
 APAN FIVE ALFA and PUEBLA TWO CHARLIE:  
 320' per NM to 14000'.  
 BETER TWO, OTUMBA TWO and VISOS THREE:  
 240' per NM to 13000'.  
 CUAUTLA THREE ALFA, PASTEJE THREE ALFA and  
 TOLUCA FOUR ALFA: 290' per NM to 15000'.

Gnd speed-KT	75	100	150	200	250	300
240' per NM	300	400	600	800	1000	1200
290' per NM	363	483	725	967	1208	1450
320' per NM	400	533	800	1067	1333	1600

Maximum climb gradient:  
 PASTEJE THREE ALFA and TOLUCA FOUR ALFA:  
 500' per NM to FL230.

Gnd speed-KT	75	100	150	200	250	300
500' per NM	625	833	1250	1667	2083	2500

SID	INITIAL CLIMB
APAN FIVE ALFA	Climb via MEX R-053 to VASOS, turn RIGHT to intercept APN R-249 to APN.
BETER TWO VISOS THREE	Climb via MEX R-053 to VASOS, proceed on MEX R-053 to VISOS or BETER.
CUAUTLA THREE ALFA	Climb via MEX R-053 to VASOS, turn RIGHT to intercept OTU R-199, proceed to D21 OTU, turn LEFT to intercept CUA R-350 to CUA.
OTUMBA TWO	Climb via MEX R-053 to VASOS, turn LEFT to intercept OTU R-219 to OTU.
PASTEJE THREE ALFA	Climb via MEX R-053 to VASOS, turn RIGHT to intercept OTU R-199, proceed to D21 OTU, turn RIGHT to intercept TLC R-083 toward TLC, turn RIGHT to intercept PTJ R-110 to PTJ.
PUEBLA TWO CHARLIE	Climb via MEX R-053 to VASOS, turn RIGHT to intercept APN R-249 to D19 APN, turn RIGHT to intercept PBC R-318 to PBC.
TOLUCA FOUR ALFA	Climb via MEX R-053 to VASOS, turn RIGHT to intercept OTU R-199, proceed to D21 OTU, turn RIGHT to intercept TLC R-083 to TLC.
ROUTING	
Continue via assigned route or in accordance with ATC instructions.	

CHANGES: BETER ONE SID renumbered.

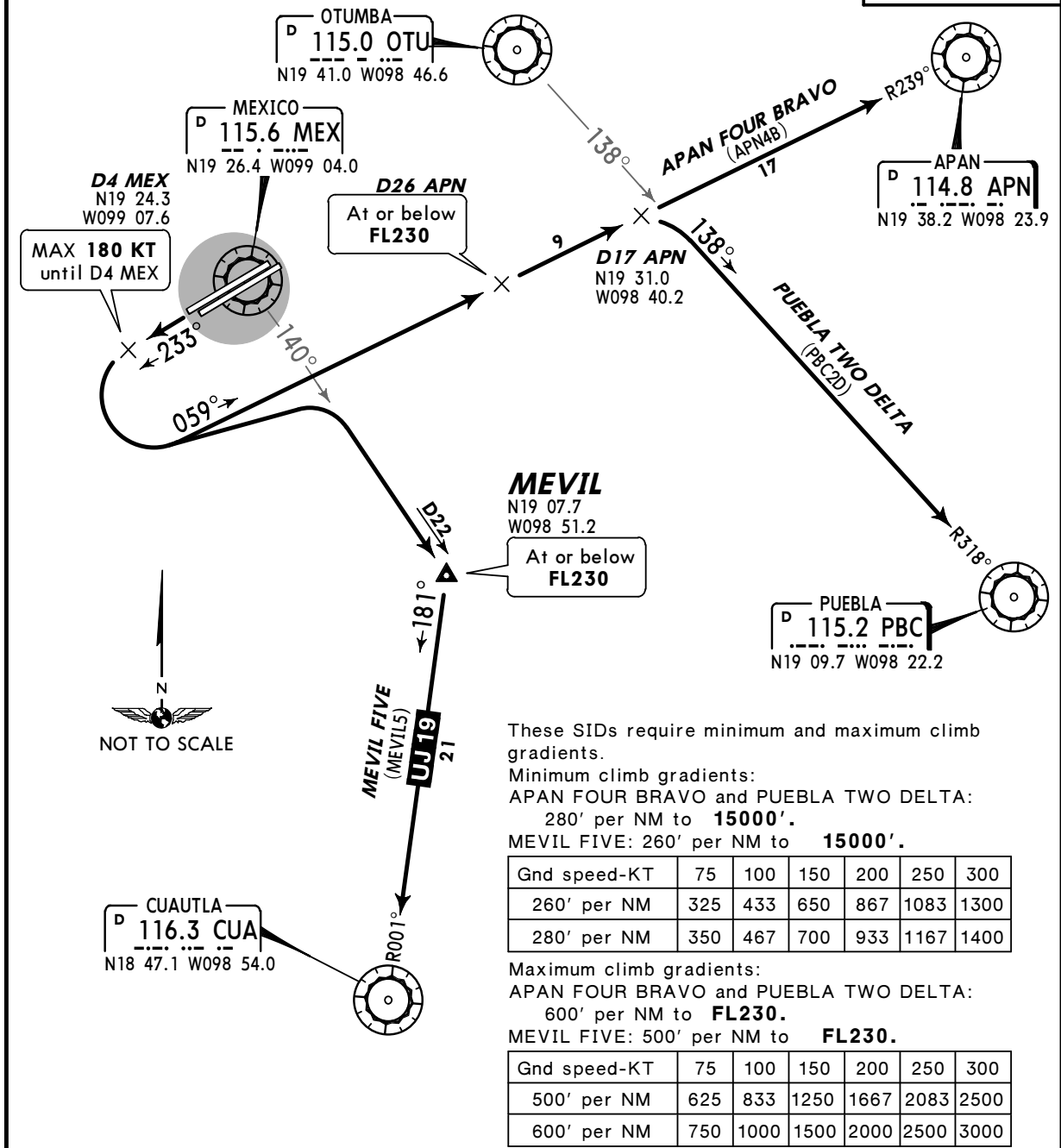
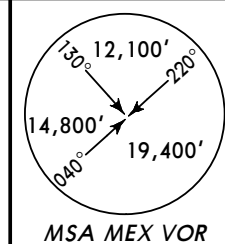
**MMM/MEX**  
**BENITO JUAREZ INTL**

**MEXICO CITY, MEXICO**

**SID**

MEXICO Terminal (R) (DEP) West East 129.1 120.5	Apt Elev <b>7316'</b>	Trans level: FL195 Trans alt: 18500' 1. In case of failure of MEX and other nav aids involved in each procedure, EXPECT RADAR vectors. 2. These SIDs can be changed in accordance with ATC instructions by means of RADAR vectors and/or speed changes.
--	--------------------------	---

**DEPARTURES RWYS 23L/R**  
**APAN FOUR BRAVO (APN4B),**  
**MEVIL FIVE (MEVIL5),**  
**PUEBLA TWO DELTA (PBC2D)**  
**SPEED: MAX 180 KT UNTIL D4 MEX**



These SIDs require minimum and maximum climb gradients.

Minimum climb gradients:  
APAN FOUR BRAVO and PUEBLA TWO DELTA: 280' per NM to **15000'**.  
MEVIL FIVE: 260' per NM to **15000'**.

Gnd speed-KT	75	100	150	200	250	300
280' per NM	325	433	650	867	1083	1300
260' per NM	350	467	700	933	1167	1400

Maximum climb gradients:  
APAN FOUR BRAVO and PUEBLA TWO DELTA: 600' per NM to **FL230**.  
MEVIL FIVE: 500' per NM to **FL230**.

Gnd speed-KT	75	100	150	200	250	300
500' per NM	625	833	1250	1667	2083	2500
600' per NM	750	1000	1500	2000	2500	3000

SID	INITIAL CLIMB
<b>APAN FOUR BRAVO</b>	Climb via MEX R-233 to D4 MEX, turn LEFT to intercept APN R-239 to APN. Continue to the station or in accordance with ATC instructions.
<b>MEVIL FIVE</b>	Climb via MEX R-233 to D4 MEX, turn LEFT to intercept MEX R-140 to MEVIL. Turn RIGHT to intercept CUA R-001 to CUA. Continue via assigned route or in accordance with ATC instructions.
<b>PUEBLA TWO DELTA</b>	Climb via MEX R-233 to D4 MEX, turn LEFT to intercept APN R-239 and proceed to D17 APN, turn RIGHT to intercept PBC R-318 to PBC. Continue via assigned route or in accordance with ATC instructions.

**MMMX/MEX**  
**BENITO JUAREZ INTL**



**MEXICO CITY, MEXICO**

4 FEB 11

(10-3B)

Eff 10 Feb

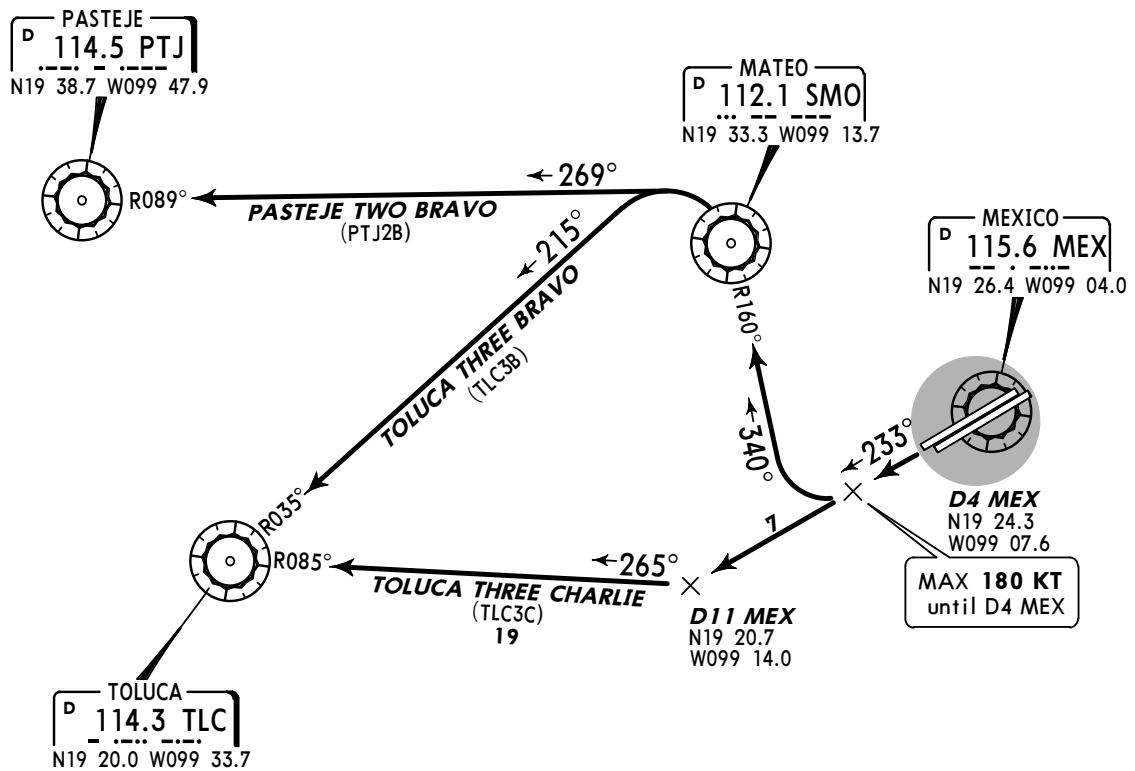
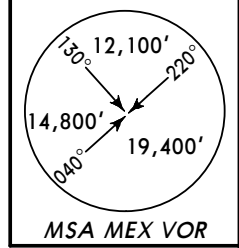
**SID**

MEXICO Terminal (R) (DEP) West East 129.1 120.5	Apt Elev <b>7316'</b>	Trans level: FL195 Trans alt: 18500' 1. In case of failure of MEX and other nav aids involved in each procedure, EXPECT RADAR vectors. 2. These SIDs can be changed in accordance with ATC instructions by means of RADAR vectors and/or speed changes.
--	--------------------------	---

**DEPARTURES RWYS 23L/R**

PASTEJE TWO BRAVO (PTJ2B),  
TOLUCA THREE BRAVO (TLC3B),  
TOLUCA THREE CHARLIE (TLC3C)

**SPEED: MAX 180 KT UNTIL D4 MEX**



These SIDs require minimum climb gradients of:  
PASTEJE TWO BRAVO and TOLUCA THREE BRAVO:  
320' per NM to **15000'**.  
TOLUCA THREE CHARLIE: 370' per NM to **15000'**.

Gnd speed-KT	75	100	150	200	250	300
320' per NM	400	533	800	1067	1333	1600
370' per NM	463	617	925	1233	1542	1850

SID	INITIAL CLIMB
<b>PASTEJE TWO BRAVO</b>	Climb via MEX R-233 to D4 MEX, turn RIGHT to intercept SMO R-160 to SMO, turn LEFT to intercept PTJ R-089 to PTJ.
<b>TOLUCA THREE BRAVO</b>	Climb via MEX R-233 to D4 MEX, turn RIGHT to intercept SMO R-160 to SMO, turn LEFT to intercept TLC R-035 to TLC.
<b>TOLUCA THREE CHARLIE</b>	Climb via MEX R-233 to D11 MEX, turn RIGHT to intercept TLC R-085 to TLC.
ROUTING	
Continue via assigned route or in accordance with ATC instructions.	

**MMMX/MEX**

Apt Elev **7316'**  
N19 26.2 W099 04.3

**JEPPESEN**

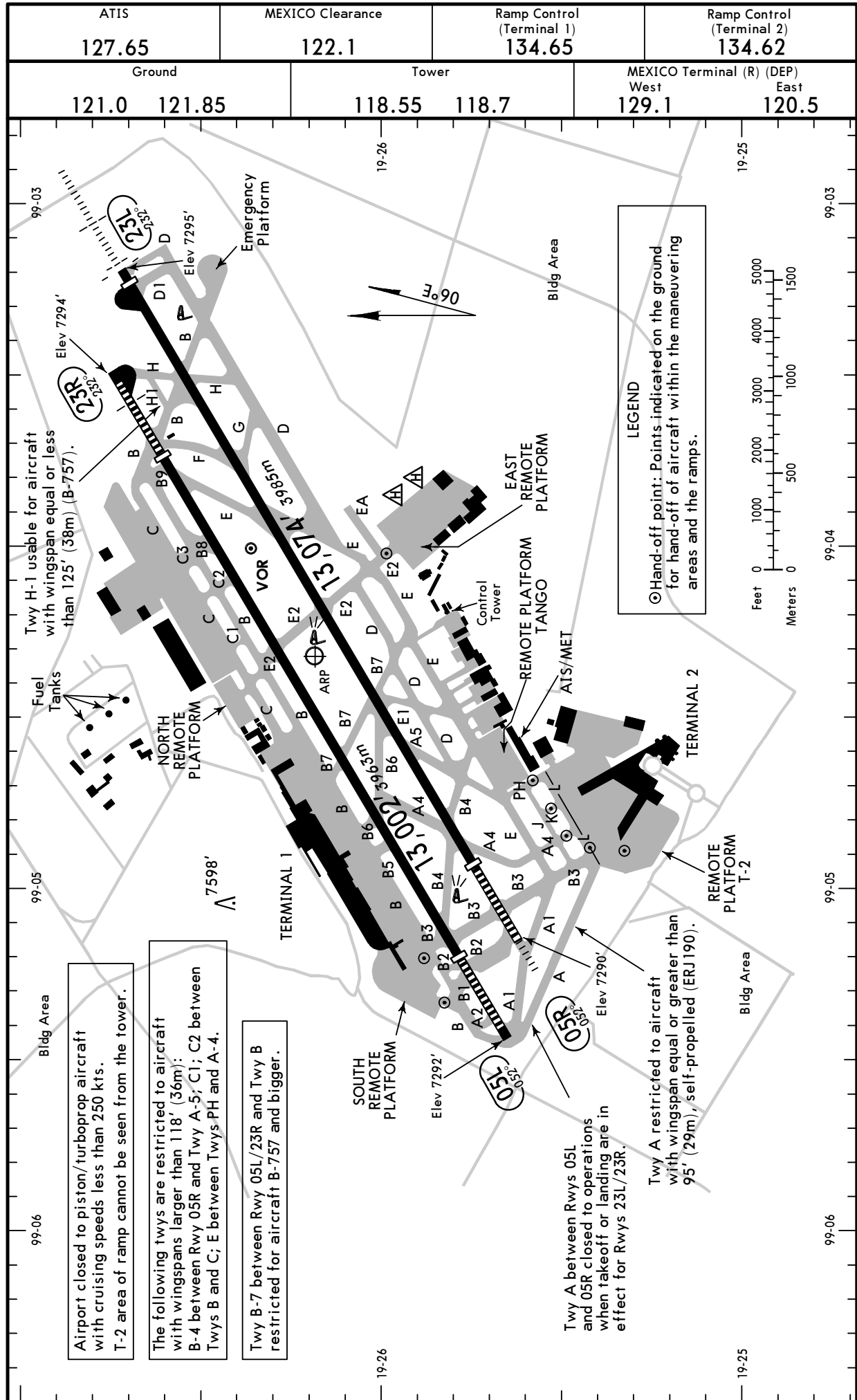
4 FEB 11

10-9

Eff 10 Feb

**MEXICO CITY, MEXICO**

**BENITO JUAREZ INTL**



MMMX/MEX



MEXICO CITY, MEXICO

4 FEB 11

10-9A

Eff 10 Feb

BENITO JUAREZ INTL

GENERAL

CAUTION: Birds in the vicinity of airport.

All civil aircraft that operate within a radius of 100 NM of MEX VOR must have transponder and automatic altitude transmitter.

ADDITIONAL RUNWAY INFORMATION

RWY		USABLE LENGTHS			WIDTH
		Threshold	LANDING BEYOND Glide Slope	TAKE-OFF	
05R	HIRL SALS PAPI-L (angle 3.0°)	11,582' 3530m	10,563' 3220m		148' 45m
	23L HIRL ALS PAPI-L (angle 3.0°)	12,812' 3905m	11,700' 3566m	12,812' 3905m	
05L	HIRL SALS REIL PAPI-L (angle 3.0°)	11,411' 3478m		11,342' 3457m	148' 45m
	23R HIRL SALS PAPI-L (angle 3.0°)	11,342' 3457m		11,772' 3588m	

TAKE-OFF

		Rwys 05L, 05R	Rwys 23L, 23R
SCHEDULED AIR CARRIER ONLY		Other	
If Weather Below Landing Minimums, Take-off Alternate Airport Required.			
Pilot is required to report existing visibility of at least 7 HIRLS and RCL along the rwy in the take-off direction. If differences exist between reported visibility and Pilot visibility, the Pilot's report will be given preference.			
2 Eng	1/4	1 & 2 Eng	500- 1
3 & 4 Eng		3 & 4 Eng	700- 1
			500- 1

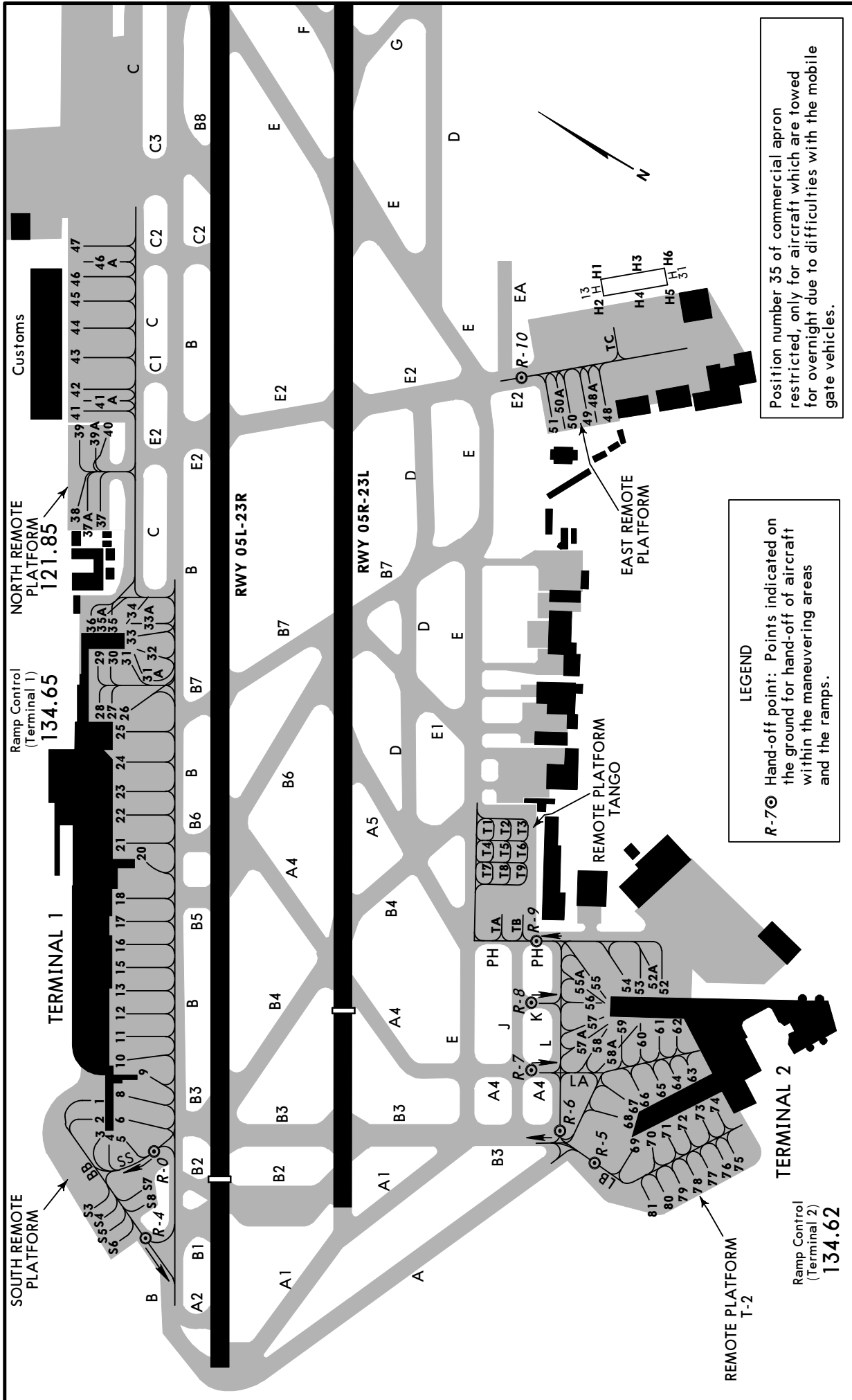
FOR FILING AS ALTERNATE

	Precision	Non-Precision
A		
B	600-2	1000-3
C		
D		

MMMX/MEX

15 MAY 09 **10-9B**

**MEXICO CITY, MEXICO**  
 LIC BENITO JUAREZ INTL



MMMX/MEX



MEXICO CITY, MEXICO

15 MAY 09

(10-9C)

LIC BENITO JUAREZ INTL

**PARKING GATE COORDINATES**

GATE No.	COORDINATES	GATE No.	COORDINATES
<b>Terminal 1</b>		<b>Terminal 2</b>	
1, 2, 3	N19 26.0 W099 05.2	52, 52-A, 53	N19 25.4 W099 04.7
4 thru 6, 8, 9	N19 25.9 W099 05.2	54 thru 58	N19 25.5 W099 04.7
10 thru 13	N19 26.0 W099 05.1	58-A	N19 25.4 W099 04.8
15, 16	N19 26.0 W099 05.0	59 thru 62	N19 25.4 W099 04.7
17, 18	N19 26.1 W099 05.0	63	N19 25.3 W099 04.7
20, 21, 22	N19 26.1 W099 04.9	64, 65	N19 25.3 W099 04.8
23	N19 26.1 W099 04.8	66, 67	N19 25.4 W099 04.8
24, 25	N19 26.2 W099 04.8	68	N19 25.4 W099 04.9
26, 27	N19 26.2 W099 04.7	69	N19 25.3 W099 04.9
28	N19 26.2 W099 04.8	70 thru 74	N19 25.3 W099 04.8
29	N19 26.3 W099 04.7	75 thru 77	N19 25.2 W099 04.8
30, 31, 31-A	N19 26.2 W099 04.7	78 thru 81	N19 25.3 W099 04.9
32	N19 26.2 W099 04.7	<b>East Remote Platform</b>	
33	N19 26.2 W099 04.6	48, 48A, 49	N19 25.9 W099 04.0
33-A, 34, 35	N19 26.3 W099 04.6	50, 50-A	N19 25.9 W099 04.1
35-A, 36	N19 26.3 W099 04.7	51	N19 26.0 W099 04.0
<b>North Remote Platform</b>		TC	N19 25.9 W099 03.9
37, 37-A, 38	N19 26.4 W099 04.5	<b>Heliport</b>	
39, 39-A, 40	N19 26.4 W099 04.4	H1	N19 26.0 W099 03.8
<b>Customs</b>		H2	N19 26.0 W099 03.9
41, 41-A	N19 26.5 W099 04.4	H3, H4, H5	N19 25.9 W099 03.8
42, 43, 44	N19 26.5 W099 04.3	H6	N19 25.9 W099 03.7
45, 46	N19 26.5 W099 04.2		
46-A, 47	N19 26.6 W099 04.2		
<b>South Remote Platform</b>			
S-3	N19 25.9 W099 05.3		
S-4	N19 25.9 W099 05.4		
S-5, S-6	N19 25.8 W099 05.4		
S-7	N19 25.9 W099 05.3		
S-8	N19 25.8 W099 05.3		
<b>Remote Platform Tango</b>			
T-1 thru T-6	N19 25.7 W099 04.6		
T-7	N19 25.7 W099 04.7		
T-8	N19 25.7 W099 04.6		
T-9	N19 25.6 W099 04.6		
TA, TB	N19 25.6 W099 04.7		



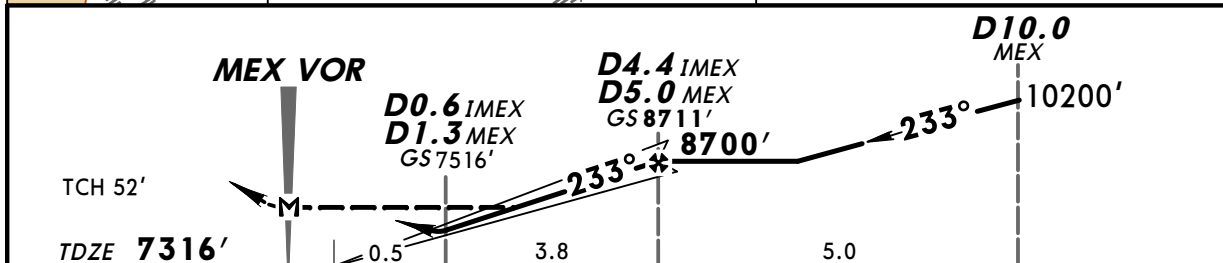
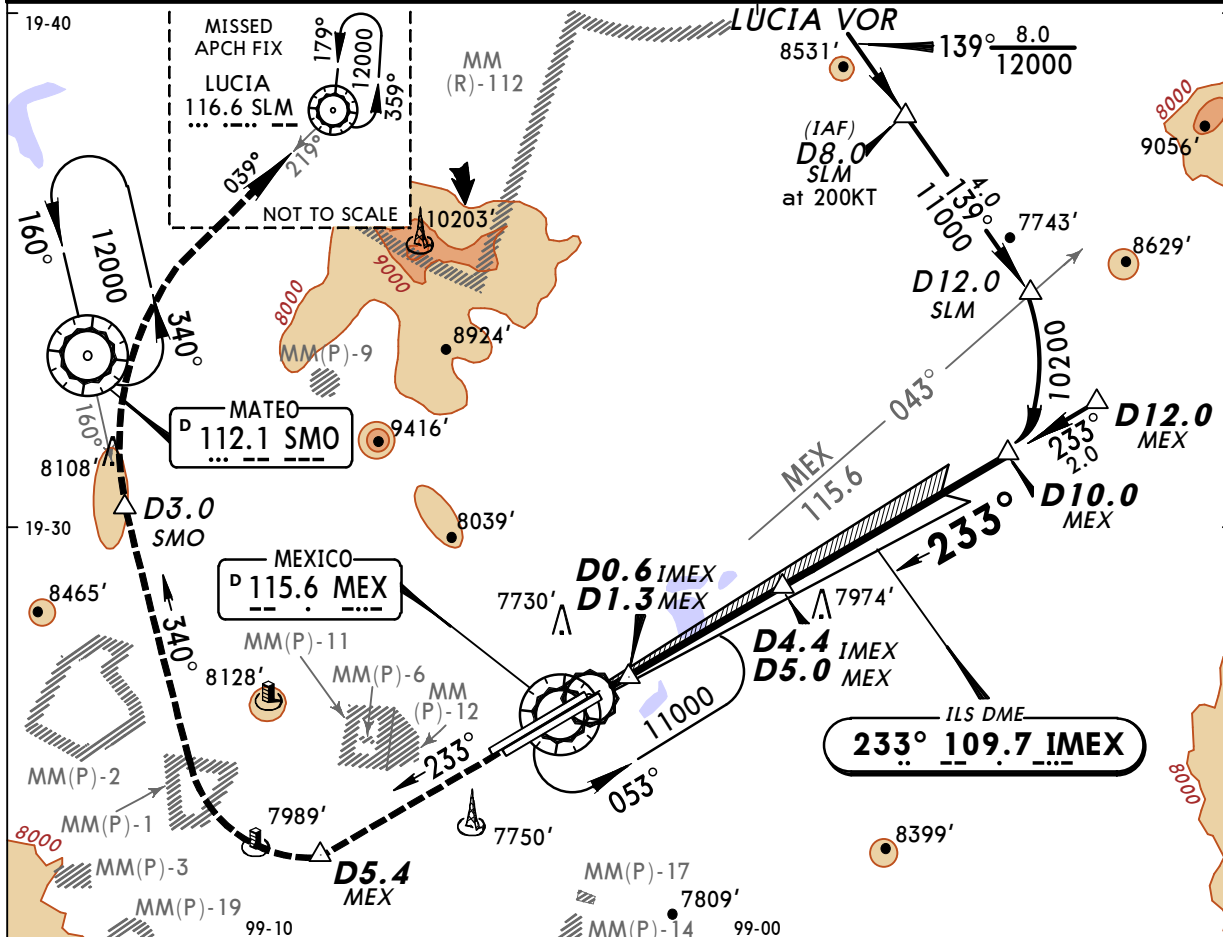
**MMM/MEX**  
**BENITO JUAREZ INTL**

**JEPPesen**  
13 MAY 11 **(11-2)**

**MEXICO CITY, MEXICO**  
**ILS DME-1 Rwy 23L**

BRIEFING STRIP™

ATIS	MEXICO Terminal (R) (APP)	MEXICO Approach (R)	MEXICO Tower	Ground
127.65	129.6	121.2	118.55 118.7	121.0 121.85
LOC IMEX <b>109.7</b>	Final Aptch Crs <b>233°</b>	GS <b>D4.4 IMEX</b> <b>D5.0 MEX</b> <b>8711' (1395')</b>	ILS DA(H) (CONDITIONAL) <b>7516' (200')</b>	Apt Elev <b>7316'</b> TDZE <b>7316'</b>
<p><b>MISSED APCH:</b> Climb outbound on MEX VOR R-233 to D5.4 MEX, turn RIGHT to intercept inbound SMO VOR R-160 to D3.0 SMO, turn RIGHT to intercept inbound SLM VOR R-219 to SLM VOR to the minimum holding altitude or in accordance with ATC instructions.</p>				
Alt Set: IN (MB on req)		Trans level: FL 195	Trans alt: 18500'	MSA MEX VOR



Gnd speed-Kts	70	90	100	120	140	160	ALS	MEX on 115.6 R-233	D5.4 MEX
GS	3.00°	372	478	531	637	849			
MAP at MEX VOR							PAPI		

STRAIGHT-IN LANDING RWY 23L				CIRCLE-TO-LAND	
ILS		LOC (GS out)		Max Kts	MDA(H)
FULL	ALS out	FULL	ALS out		
A/B				90/120	7960' (644')-1
C	1/2	3/4	3/4	140	7960' (644')-1 3/4
D			1	165	7960' (644')-2
ALL Non Skd	DA(H) <b>7566' (250')-1</b>		1	1 1/4	

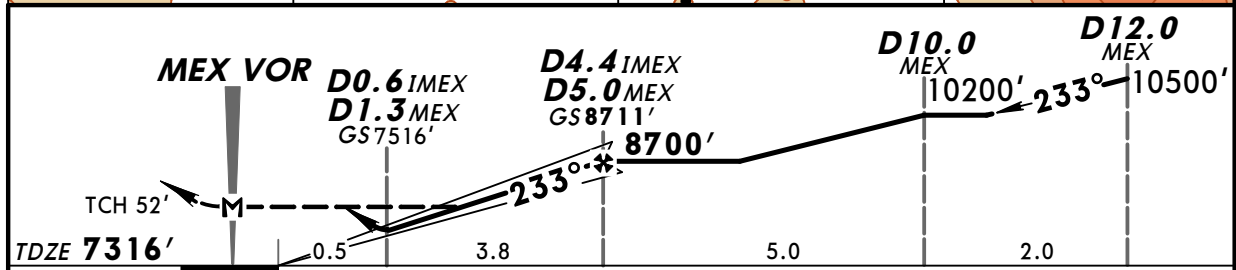
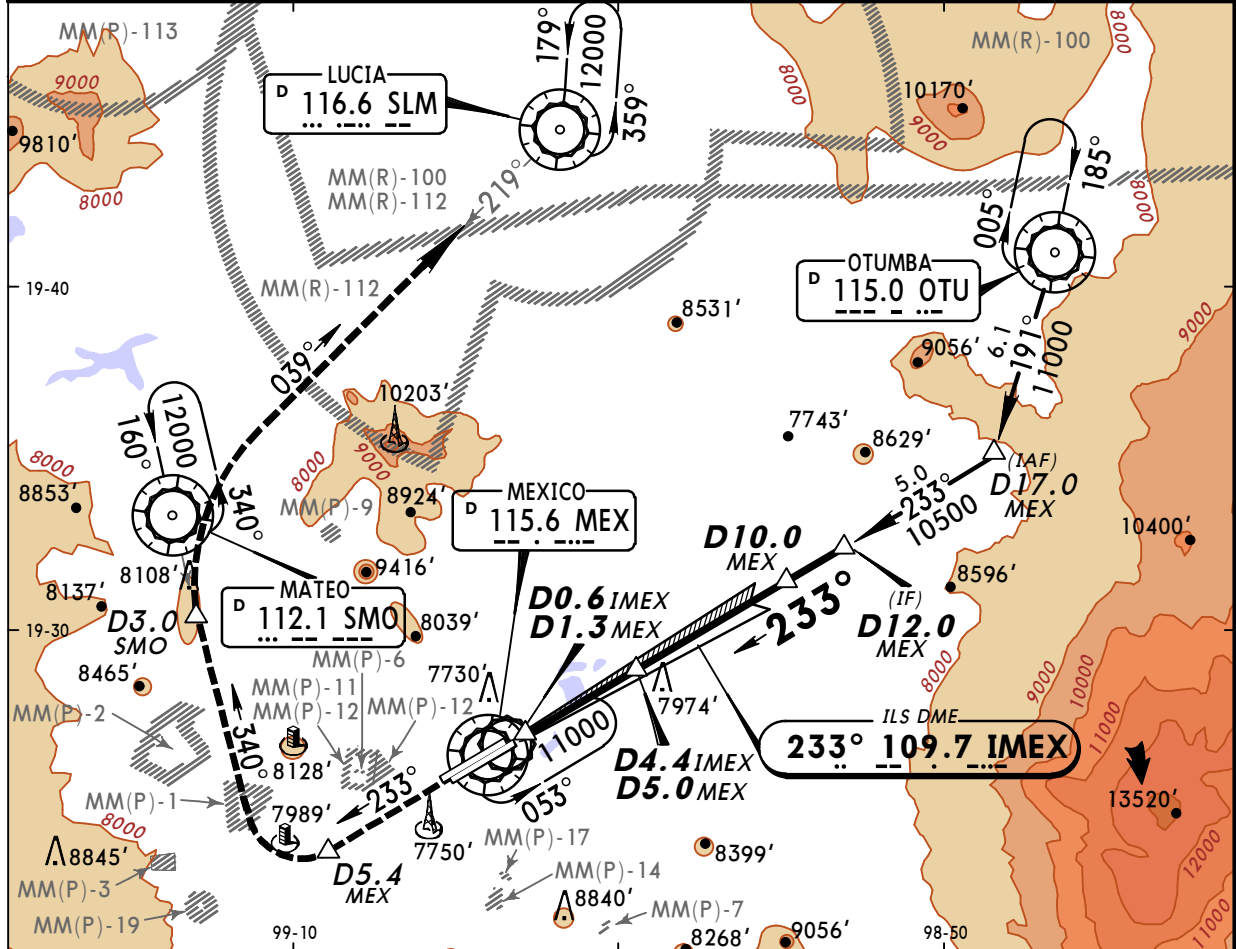
**MMMX/MEX**  
**BENITO JUAREZ INTL**

**JEPPESEN**  
15 APR 11 **(11-3)**

**MEXICO CITY, MEXICO**  
**ILS DME-2 Rwy 23L**

BRIEFING STRIP™

ATIS <b>127.65</b>	MEXICO Terminal (R) (APP) <b>129.6</b>	MEXICO Approach (R) <b>121.2</b>	MEXICO Tower <b>118.55 118.7</b>	Ground <b>121.0 121.85</b>
LOC IMEX <b>109.7</b>	Final Apch Crs <b>233°</b>	GS <b>D4.4 IMEX</b> <b>D5.0 MEX</b> <b>8711' (1395')</b>	ILS DA(H) (CONDITIONAL) <b>7516' (200')</b>	Apt Elev <b>7316'</b> TDZE <b>7316'</b>
<b>MISSED APCH:</b> Climb outbound on MEX VOR R-233 to D5.4 MEX, turn RIGHT to intercept inbound SMO VOR R-160 to D3.0 SMO, turn RIGHT to intercept inbound SLM VOR R-219 to SLM VOR to the minimum holding altitude or in accordance with ATC instructions.				
Alt Set: IN (MB on req)		Trans level: FL 195	Trans alt: 18500'	MSA MEX VOR



Gnd speed-Kts	70	90	100	120	140	160	ALS PAPI	MEX on <b>115.6</b> <b>R-233</b>	<b>D5.4</b> MEX
GS	3.00°	372	478	531	637	849			
MAP at MEX VOR									

STRAIGHT-IN LANDING RWY 23L				CIRCLE-TO-LAND	
ILS DA(H) <b>7516' (200')</b>		LOC (GS out) MDA(H) <b>7680' (364')</b>		Max Kts	MDA(H)
FULL	ALS out	FULL	ALS out		
A/B				90/120	<b>7960' (644')-1</b>
C	1/2	3/4	3/4	140	<b>7960' (644')-1 3/4</b>
D			1	165	<b>7960' (644')-2</b>
ALL Non Skd	DA(H) <b>7566' (250')-1</b>		1	1 1/4	

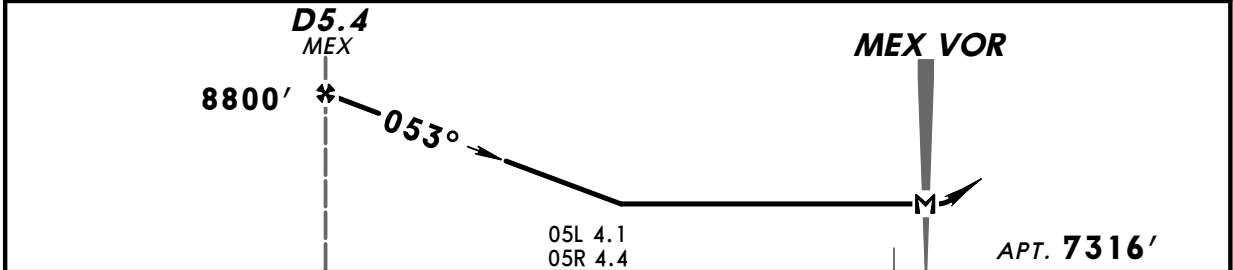
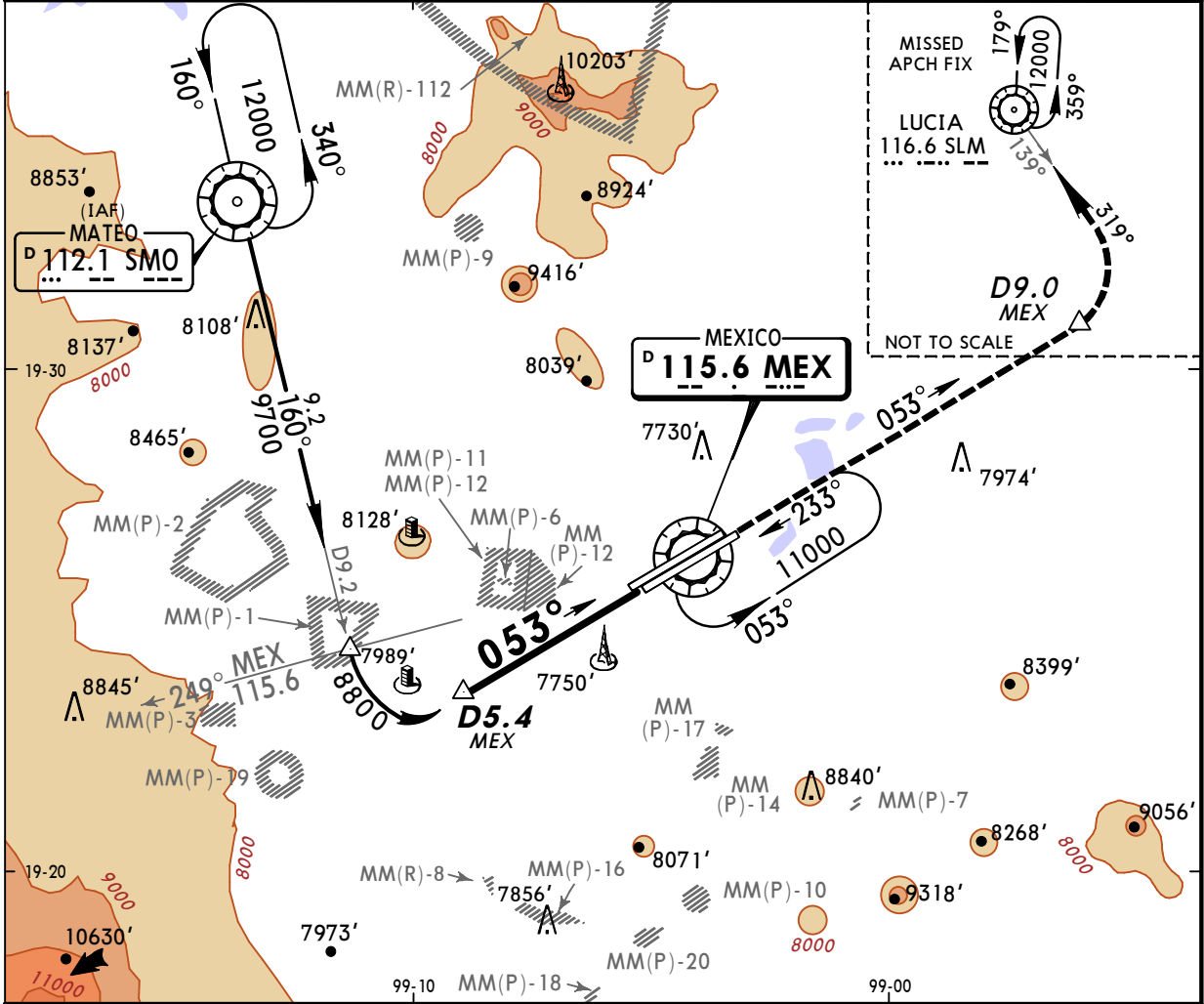
**MMMX/MEX**  
**BENITO JUAREZ INTL**

**JEPPESEN**  
15 APR 11 **(13-1)**

**MEXICO CITY, MEXICO**  
**VOR DME Rwy 05L/R**

BRIEFING STRIP™

ATIS <b>127.65</b>	MEXICO Terminal (R) (APP) <b>129.6</b>	MEXICO Approach (R) <b>121.2</b>	MEXICO Tower <b>118.55 118.7</b>	Ground <b>121.0 121.85</b>
VOR MEX <b>115.6</b>	Final Apch Crs <b>053°</b>	Minimum Alt <b>D5.4 MEX</b> <b>8800'</b> (1484')	MDA(H) <b>7900'</b> (584')	Apt Elev <b>7316'</b>
<b>MISSED APCH:</b> Climb outbound on MEX VOR R-053 to D9.0 MEX, turn LEFT to intercept inbound SLM VOR R-139 to SLM VOR to 12000' and expect ATC instructions.				
Alt Set: IN (MB on req)		Trans level: FL 195	Trans alt: 18500'	
1. Restriction: Max approach speed 160 KIAS or minimum maneuvering speed from SMO VOR.				MSA MEX VOR



MAP at MEX VOR	Rwy 05L SALS REIL PAPI	Rwy 05R SALS PAPI	MEX on <b>115.6 R-053</b>	<b>D9.0 MEX</b>
----------------	------------------------	-------------------	---------------------------	-----------------

STRAIGHT-IN LANDING RWY 05L/R		CIRCLE-TO-LAND	
MDA(H) <b>7900'</b> (584')		MDA(H)	
	ALS out	Max Kts	
A	1	90	<b>7960'</b> (644')-1
B	1 1/2	120	<b>7960'</b> (644')-1 3/4
C	1 1/2	140	<b>7960'</b> (644')-1 3/4
D	1 3/4	165	<b>7960'</b> (644')-2

CHANGES: Approach speed restriction modified.

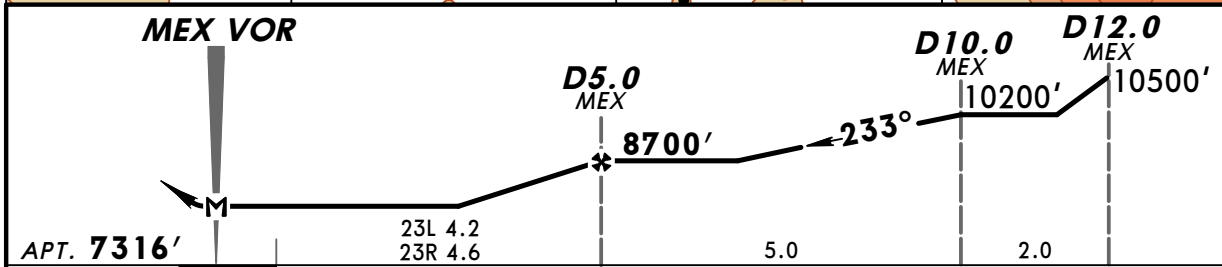
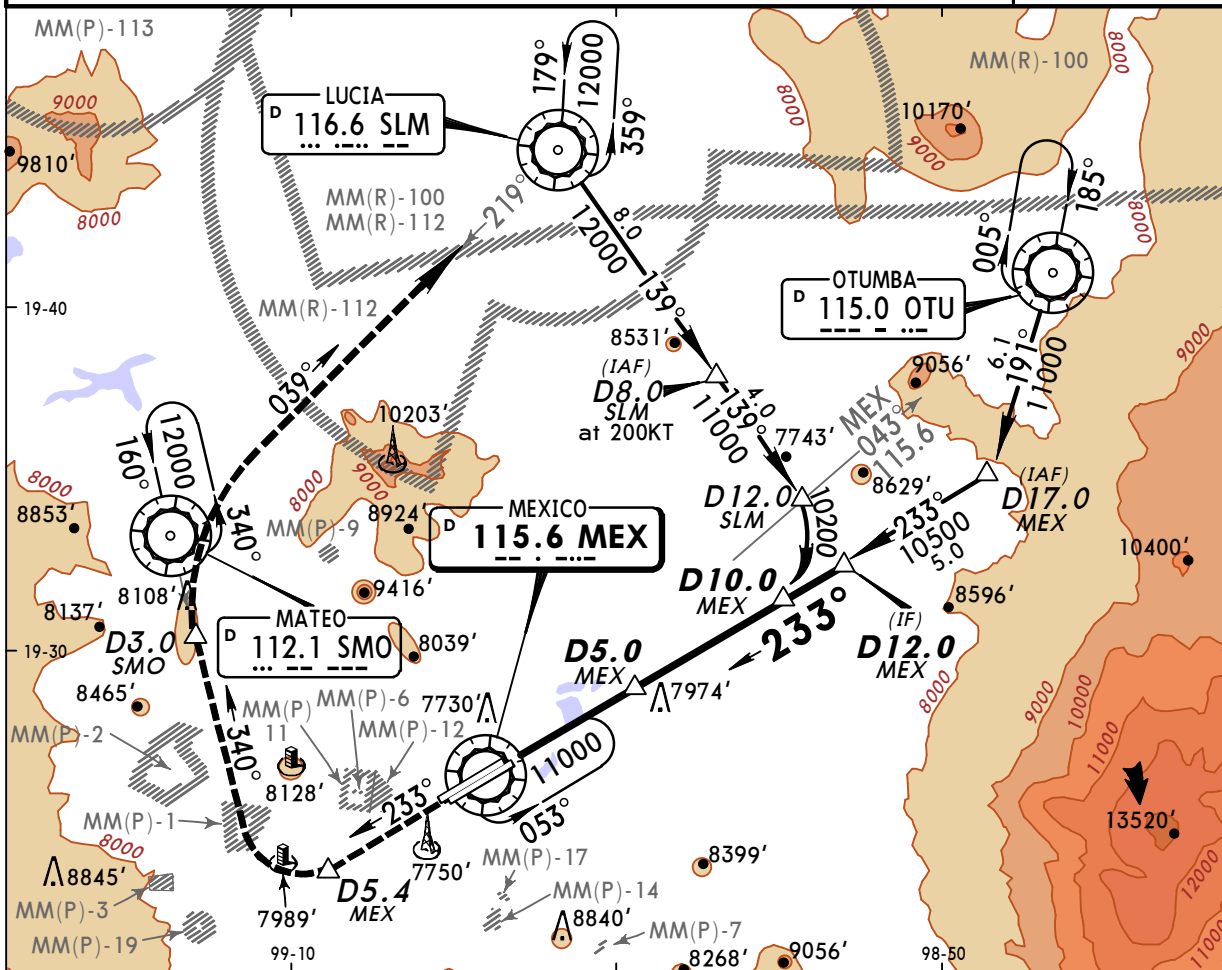
**MMM/MEX**  
**BENITO JUAREZ INTL**

**JEPPESEN**  
 18 MAR 11 **(13-2)**

**MEXICO CITY, MEXICO**  
**VOR DME Rwy 23L/R**

BRIEFING STRIP™

ATIS	MEXICO Terminal (R) (APP)	MEXICO Approach (R)	MEXICO Tower	Ground
127.65	129.6	121.2	118.55 118.7	121.0 121.85
VOR MEX <b>115.6</b>	Final Apch Crs <b>233°</b>	Minimum Alt <b>D5.0 MEX</b> <b>8700' (1384')</b>	MDA(H) <b>7900' (584')</b>	Apt Elev <b>7316'</b>
<p><b>MISSED APCH:</b> Climb outbound on MEX VOR R-233 to D5.4 MEX, turn RIGHT to intercept inbound SMO VOR R-160 to D3.0 SMO, turn RIGHT to intercept SLM VOR R-219 to SLM VOR to the minimum holding altitude or in accordance with ATC instructions.</p>				
Alt Set: IN (MB on req)		Trans level: FL 195	Trans alt: 18500'	MSA MEX VOR



		Rwy 23L ALS	Rwy 23R SALS	MEX on <b>115.6</b> <b>R-233</b>	<b>D5.4</b> MEX
		PAPI	PAPI		
MAP at MEX VOR					

STRAIGHT-IN LANDING RWY 23L/R			CIRCLE-TO-LAND	
MDA(H) <b>7900' (584')</b>			Max Kts	MDA(H)
		ALS out		
A	1		90	<b>7960' (644')-1</b>
B			120	<b>7960' (644')-1</b>
C	1½		140	<b>7960' (644')-1¾</b>
D	1¾		165	<b>7960' (644')-2</b>

CHANGES: OTU VOR holding pattern.

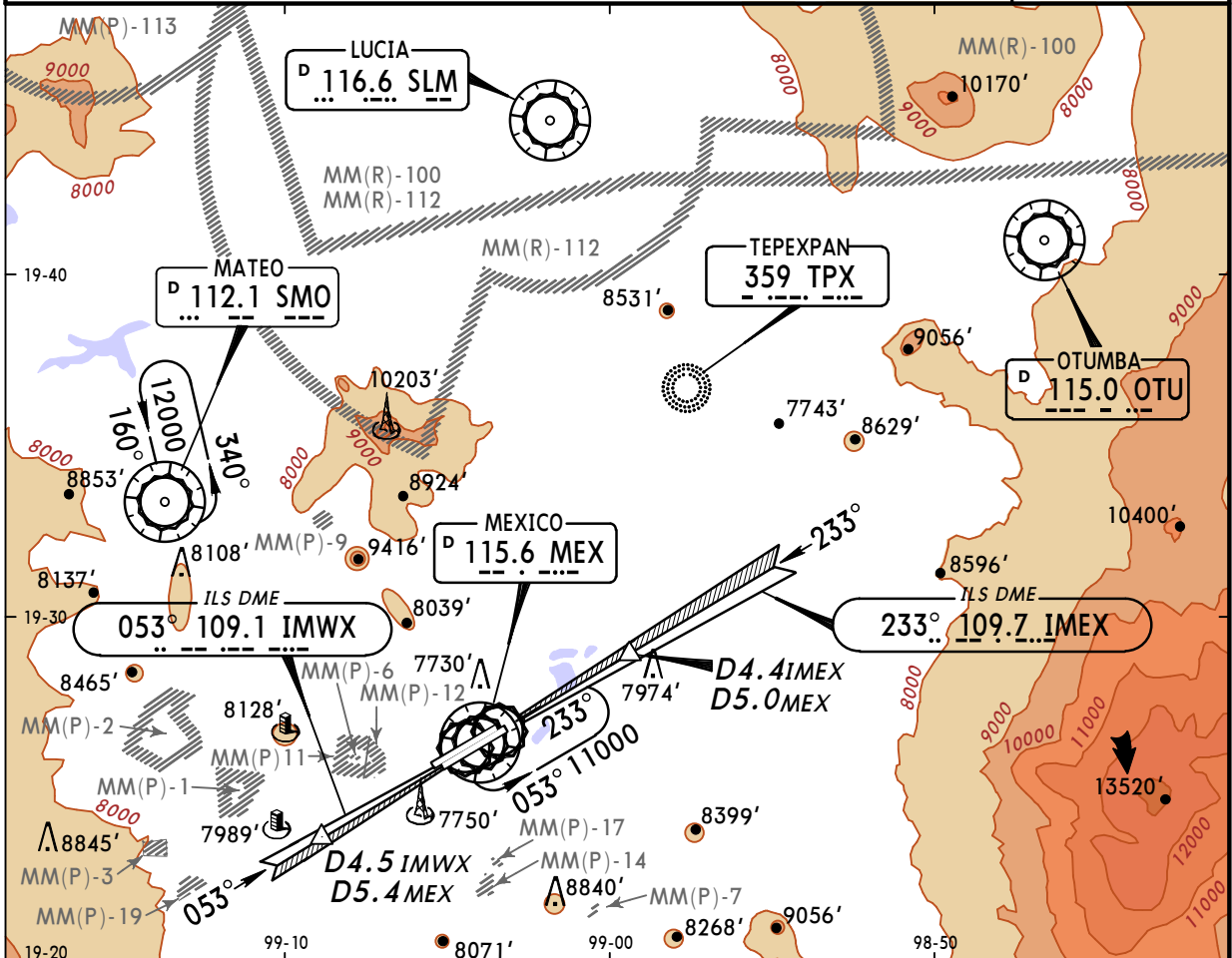
**MMM/MEX**  
**BENITO JUAREZ INTL**

**JEPPESEN**  
18 MAR 11 (18-1)

**MEXICO CITY, MEXICO**  
**RADAR All Rws**

BRIEFING STRIP™

ATIS	MEXICO Terminal (R) (APP)	MEXICO Approach (R)	MEXICO Tower	Ground
127.65	129.6	121.2	118.55 118.7	121.0 121.85
RADAR	Final Apch Crs By ATC	Minimum Alt No FAF	MDA(H) Refer to Minimums	Apt Elev 7316' TDZE - See below
Missed Approach-See below				
Alt Set: IN (MB on req)		Trans level: FL 195	Trans alt: 18500'	MSA MEX VOR



**MISSED APPROACH:**

**Runways 05L/R:** Climb outbound on MEX VOR R-053 to D10.0 MEX, then turn LEFT and intercept inbound SLM VOR R-139 to SLM VOR to 12000' and expect ATC instructions.

**Runways 23L/R:** Climb outbound on MEX VOR R-233 to D5.4 MEX, then turn RIGHT and intercept inbound SMO VOR R-160 to D3.0 SMO, turn RIGHT and intercept inbound SLM VOR R-219 to SLM VOR to the minimum holding altitude or in accordance with ATC instructions.

**LOST COMMUNICATIONS:** If transmission has not been received for more than 1 minute during vectors to final approach or for more than 30 seconds on final approach complete a visual approach. If a visual approach is not possible, proceed direct to MEX VOR at last assigned altitude or climb to 11000', establish yourself in the holding pattern at MEX VOR and try communicating with ATC, using other frequencies if necessary.

	RWY 05L RWY 7292'	RWY 05R TDZE 7316'	RWY 23L TDZE 7316'	RWY 23R TDZE 7311'	Lighting - Refer to Airport Chart
	ASR 05L MDA(H) 7900' (608')	STRAIGHT-IN LANDING ASR 05R MDA(H) 7900' (584')	ASR 23L MDA(H) 7900' (584')	ASR 23R MDA(H) 7900' (589')	CIRCLE-TO-LAND
	ALS out	ALS out	ALS out	ALS out	Max Kts
A	1	1	1	1	90
B					120
C	1½	1½	1½	1½	140
D	1¾	1¾	1¾	1¾	165
					MDA(H)
					7960' (644') - 1
					7960' (644') - 1¾
					7960' (644') - 2