

Airport information:

Country: Nigeria

City: LAGOS

Coordinates: N 06° 34.7', E003 19.4

Elevation: 135

Customs:

Fuel: 100LL, Jet A1

RFF: CAT 9

hours: AD H24

Runways:

Runway 18L

Takeoff length: 2745, Landing length: 2745

Runway 18R

Takeoff length: 3900, Landing length: 3900

Runway 36L

Takeoff length: 3900, Landing length: 3900

Runway 36R

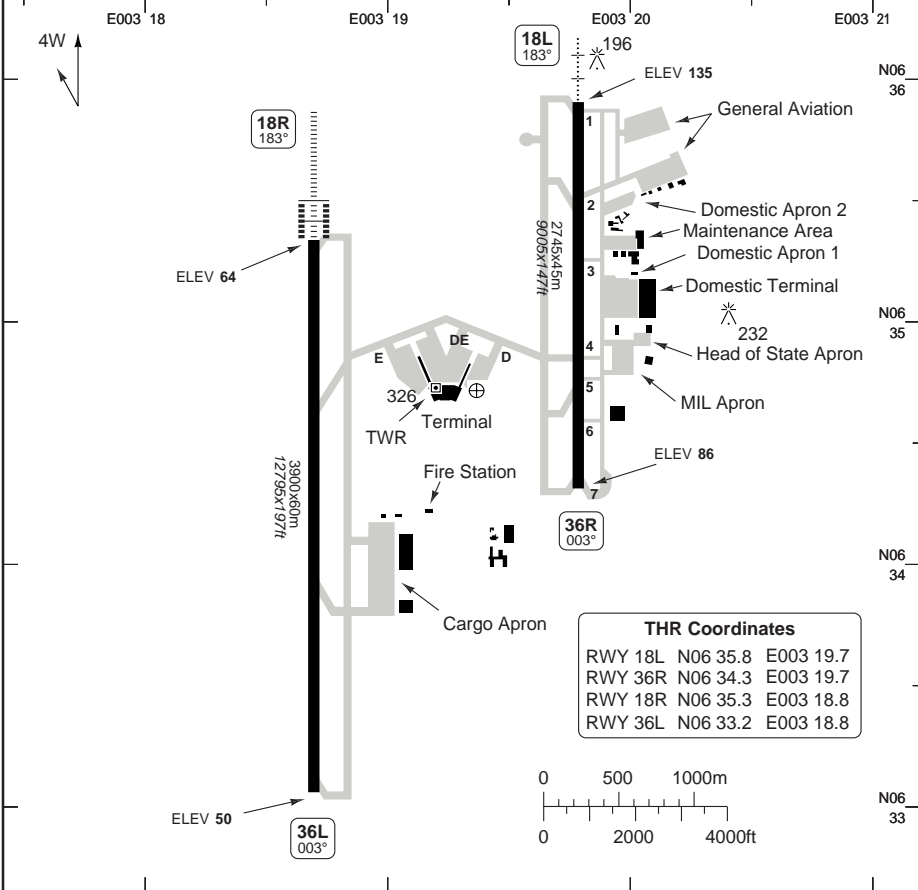
Takeoff length: 2745, Landing length: 2745

AERODROME

Murtala Muhammed LAGOS

Lagos GND 121.9	TWR 118.1 119.1	AFIS 124.3	APP RAD 124.7	CTL 127.3 120.9	ATIS 123.8
--------------------	-----------------------	---------------	------------------	-----------------------	---------------

AD Elev 135	ARP: N06 34.7 E003 19.4	RFF: CAT 9	AD HR: H24
-------------	-------------------------	------------	------------



RWY	Slope	TORA m/ft	LDA m/ft	ALS	REDL	Additional
18L	-0.5	2745 / 9005	2745 / 9005	L-E ①	H	P3° L/R (52)
36R	+0.5	2745 / 9005	2745 / 9005	-	H	-
18R	-0.1	3900 / 12795	3900 / 12795	H-B	H	② P3° L/R (58)
36L	+0.1	3900 / 12795	3900 / 12795	-	H	-

① 420m. ② Flight checked and found useable only at left side.

STATE		TAKE OFF MINIMA		RVR	
RWY	Facilities	A	B	C	D
All	RCL (day only) or RCL + REDL				ⓐ
ⓐ Take off minima must be equal to or greater than the landing minima.					

© Navtech - dnmm01laorgo

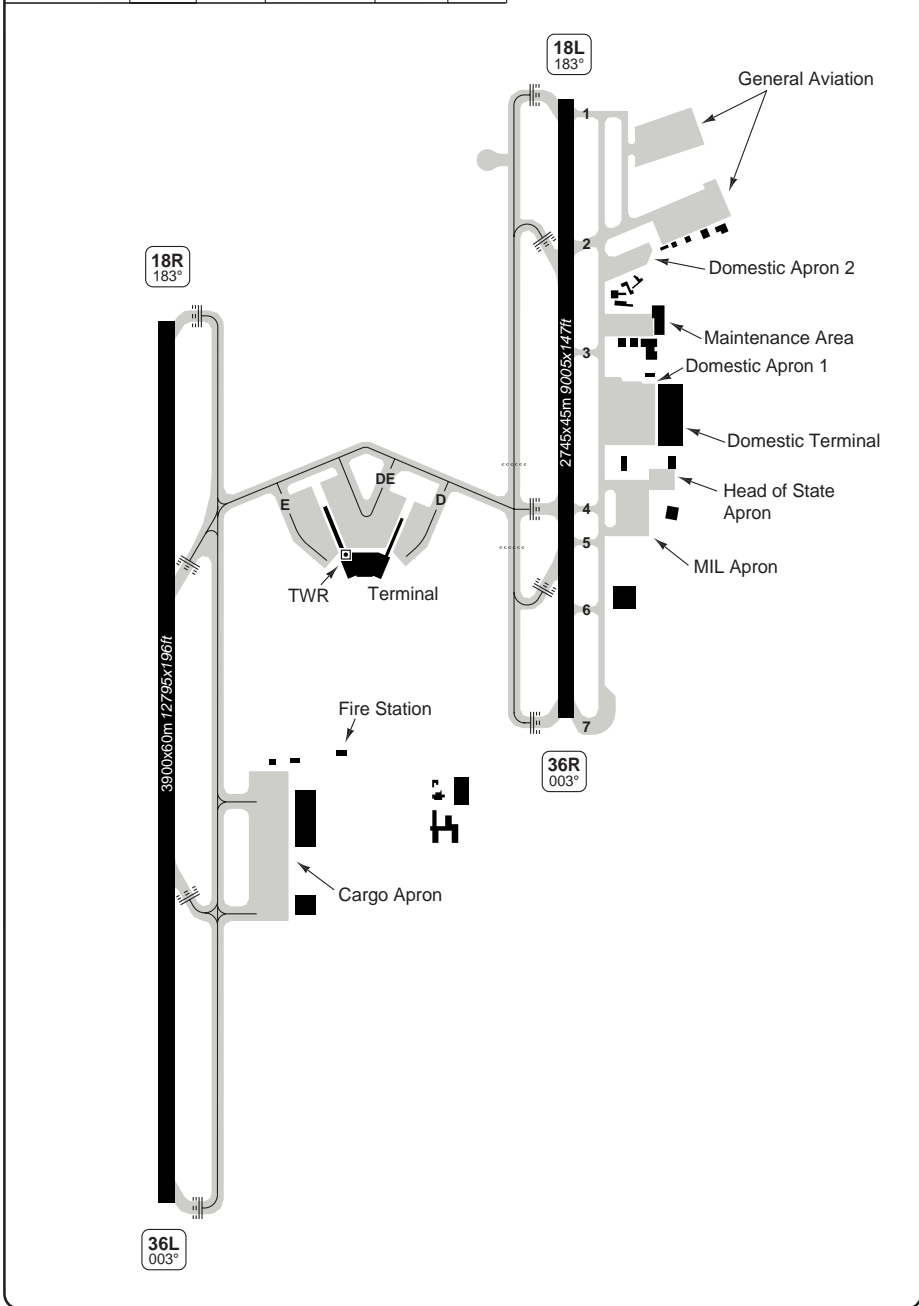
Change: New print.

THIS CHART IS A PART OF NAVIGRAPH NDAC AND IS INTENDED FOR FLIGHT SIMULATION USE ONLY

AERODROME OVERVIEW

Murtala Muhammed **LAGOS**

Lagos GND 121.9	TWR 118.1 119.1	AFIS 124.3	APP RAD 124.7	CTL 127.3 120.9	ATIS 123.8
--------------------	-----------------------	---------------	------------------	-----------------------	---------------



© Navtech - dnmm02laorg0

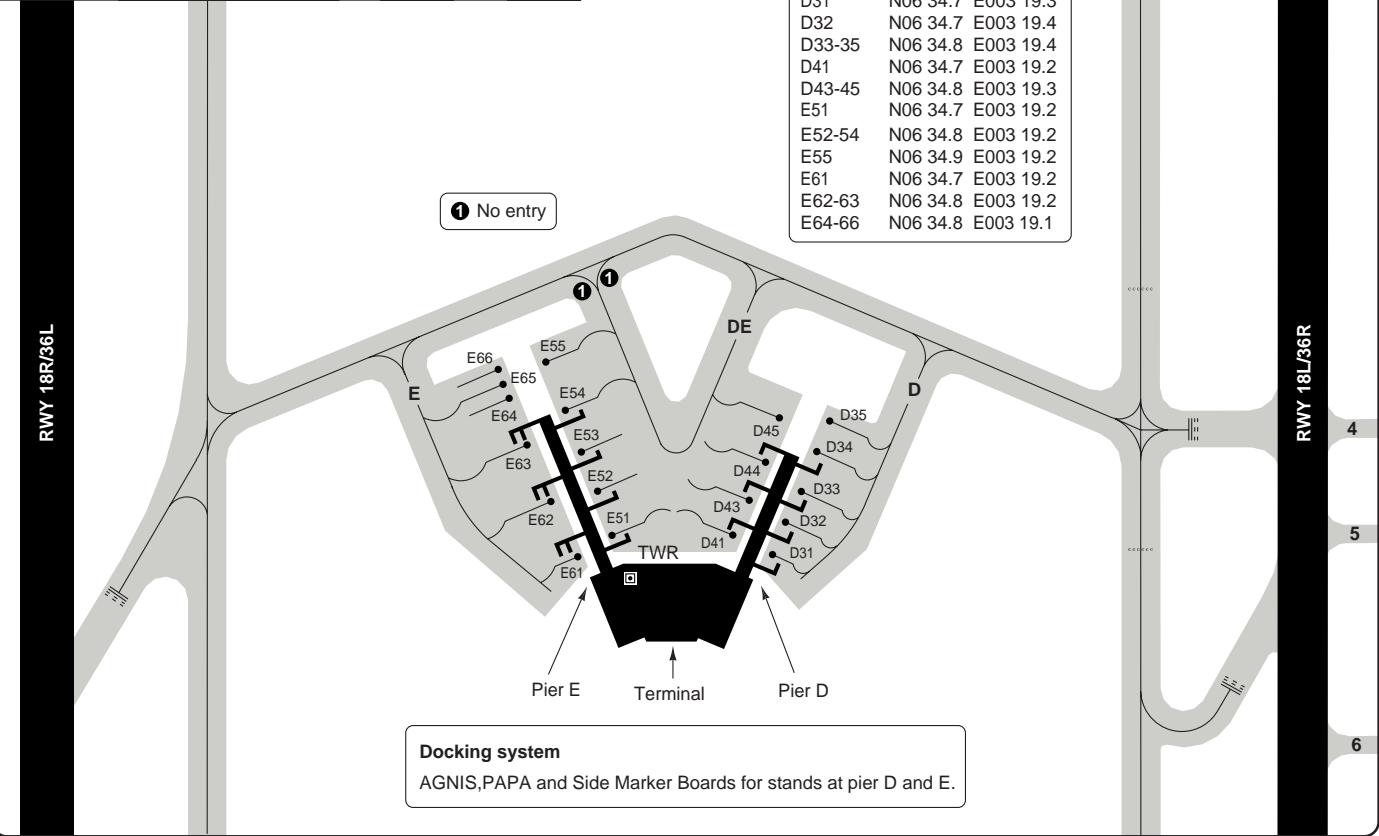
Change: New spec.

THIS CHART IS A PART OF NAVIGRAPH NDAC AND IS INTENDED FOR FLIGHT SIMULATION USE ONLY

Lagos GND	TWR	AFIS	APP RAD	CTL	ATIS
121.9	118.1 119.1	124.3	124.7	127.3 120.9	123.8

Parking position coordinates		
D31	N06 34.7	E003 19.3
D32	N06 34.7	E003 19.4
D33-35	N06 34.8	E003 19.4
D41	N06 34.7	E003 19.2
D43-45	N06 34.8	E003 19.3
E51	N06 34.7	E003 19.2
E52-54	N06 34.8	E003 19.2
E55	N06 34.9	E003 19.2
E61	N06 34.7	E003 19.2
E62-63	N06 34.8	E003 19.2
E64-66	N06 34.8	E003 19.1

1 No entry



Docking system
 AGNIS,PAPA and Side Marker Boards for stands at pier D and E.

GROUND Parking

10 - 3 | 22 APR 10

Murtala Muhammed **LAGOS**

Nigeria - DNMM / LOS

THIS CHART IS A PART OF NAVIGRAPH NDAC AND IS INTENDED FOR FLIGHT SIMULATION USE ONLY

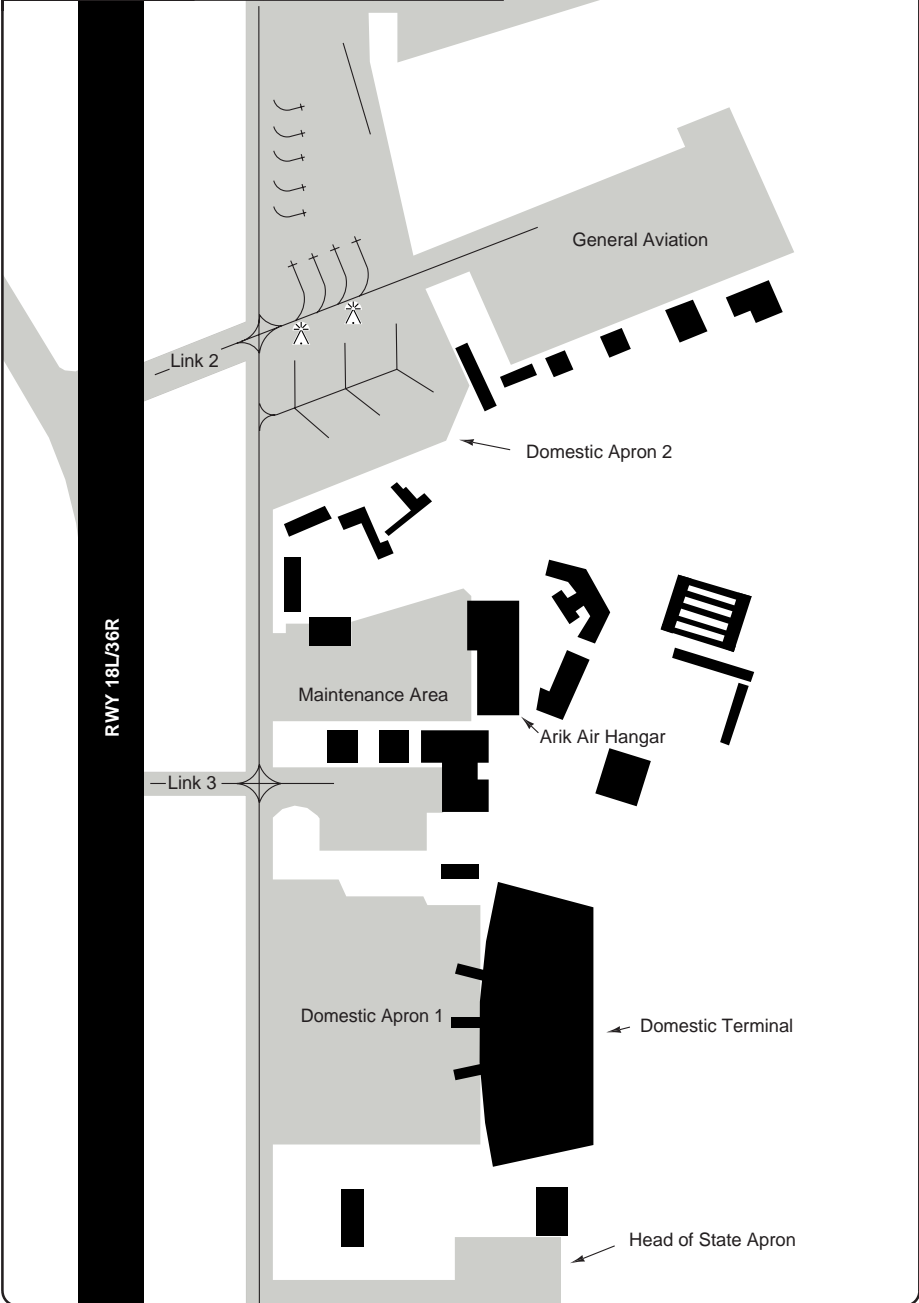
Change: Nil

GROUND Parking Domestic

Murtala Muhammed LAGOS

Lagos GND 121.9	TWR 118.1 119.1	AFIS 124.3	APP RAD 124.7	CTL 127.3 120.9	ATIS 123.8
--------------------	-----------------------	---------------	------------------	-----------------------	---------------

General Aviation



© Navitech - dnmm04gaorg0

Change: New print.

THIS CHART IS A PART OF NAVIGRAPH NDAC AND IS INTENDED FOR FLIGHT SIMULATION USE ONLY

GENERAL INFORMATION

1. WARNING

Do not confuse RWY with parallel TWYs when making visual APCH.

2. BIRD HAZARD

Bird hazard on the approach and touchdown zone of RWY 18R, exercise caution.

3. CAUTION

3.1 Uncontrolled vehicles frequently cross the runways

3.2 PAPI on runway 18R only usable on left side

4. RWY 18L/R

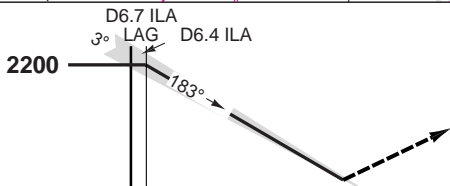
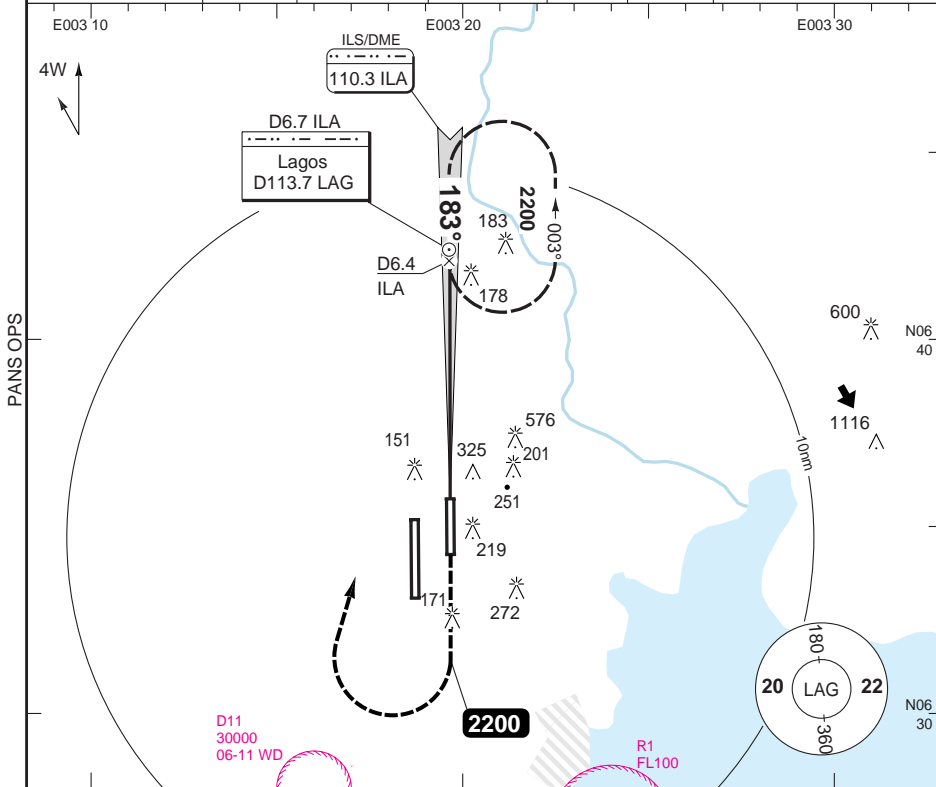
Climb to 3500ft before making left turn out.

ILS RWY 18L

Murtala Muhammed LAGOS

Lagos APP RAD 124.7	CTL 127.3 120.9	TWR 118.1 119.1	AFIS 124.3	GND 121.9	ATIS 123.8
-------------------------------	-------------------------------------	-------------------------------------	----------------------	---------------------	----------------------

ILS/DME 110.3 ILA	FAT 183°	THR Elev 135	AD Elev 135	TL ATC	TA 3500
--------------------------	-----------------	---------------------	--------------------	--------	----------------



Climb on HDG 183° to **2200**, then turn right to **LAG** HP.

nm 11 10 9 8 7 6 5 4 3 2 1 0

ACFT	ILS ^a	LOC+DME	Circling
A	340 (200) 1.0km	540 (400) 1.5km	970 (830) 1.6km
B	340 (203) 1.0km		970 (830) 2.0km
C	350 (211) 1.0km	540 (400) 1.6km	1070 (930) 4.0km
D	360 (222) 1.0km	540 (400) 2.0km	1070 (930) 4.4km

^a Values shown are RVR/Vis.

DME ILA	3.0° ALT	LDA 2745x45 9005x147ft P3° (52)
6	2080	
5	1760	
4	1450	
3	1130	
2	820	

GS	80	100	120	140	160
ROD 3.0°	420	530	640	740	850



© Navtech - dnmm01iaip00

Change: New print.

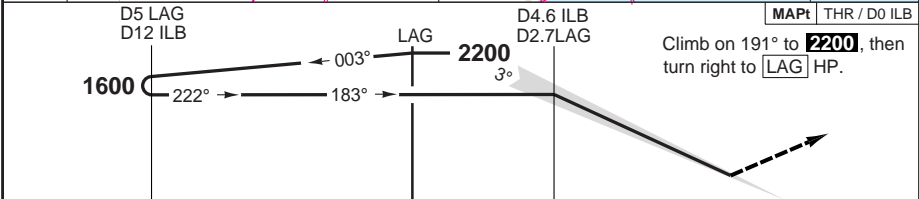
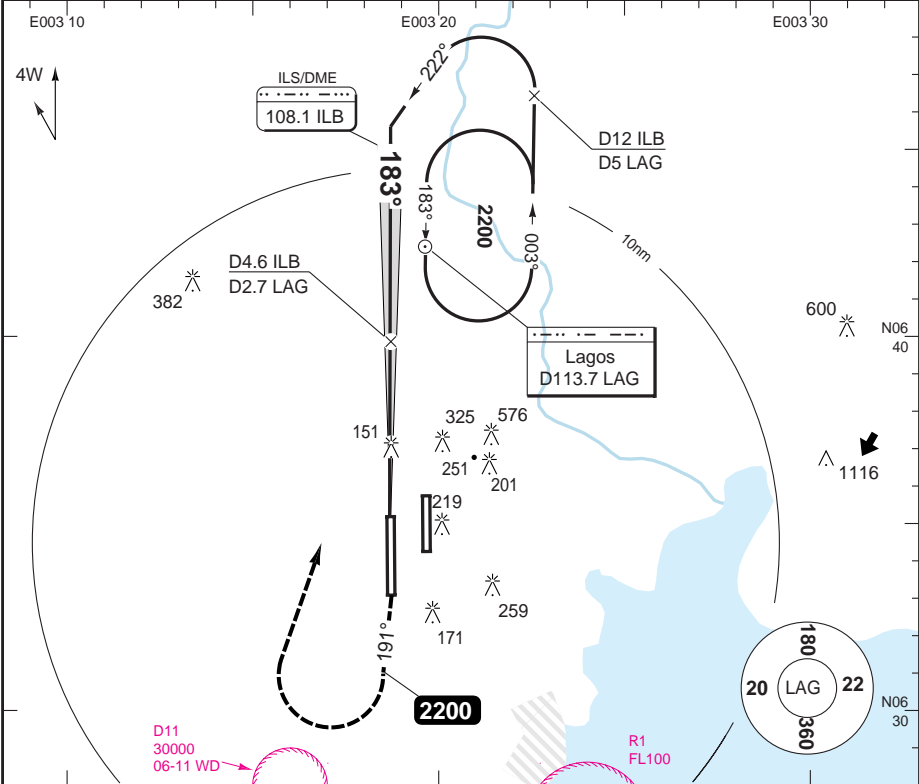
THIS CHART IS A PART OF NAVIGRAPH NDAC AND IS INTENDED FOR FLIGHT SIMULATION USE ONLY

ILS RWY 18R LAG VOR

Murtala Muhammed LAGOS

Lagos APP RAD 124.7	CTL 127.3 120.9	TWR 118.1 119.1	AFIS 124.3	GND 121.9	ATIS 123.8
-------------------------------	-------------------------------------	-------------------------------------	----------------------	---------------------	----------------------

ILS/DME 108.1 ILB	FAT 183°	THR Elev 64	AD Elev 135	TL FL50	TA 3500
--------------------------	-----------------	--------------------	--------------------	----------------	----------------



nm	14	13	12	11	10	9	8	7	6	5	4	3	2	1	0
----	----	----	----	----	----	---	---	---	---	---	---	---	---	---	---

ACFT	ILS ^a	LOC+DME	Circling
A	380 (310) 0.8km	490 (420) 1.4km	970 (830) 1.9km
B	390 (320) 0.8km		970 (830) 2.8km
C	400 (330) 0.8km	490 (420) 1.6km	1070 (930) 3.7km
D	410 (340) 0.8km	490 (420) 2.0km	1070 (930) 4.6km

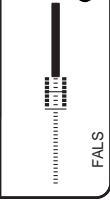
^a Values shown are RVR/Vis.

DME LAG	3.0° ALT	DME ILB	3.0° ALT
2.7	1600	4	1410
3	1500	3	1090
4	1180	2	760
5	860		
6	540		

LDA 3900x60
12795x196ft
P3° (58) ¹

GS	80	100	120	140	160
ROD 3.0°	420	530	640	740	850

¹ Flight checked and found useable only at left side.



© Navtech - dnmm02iaip00

Change: New print.

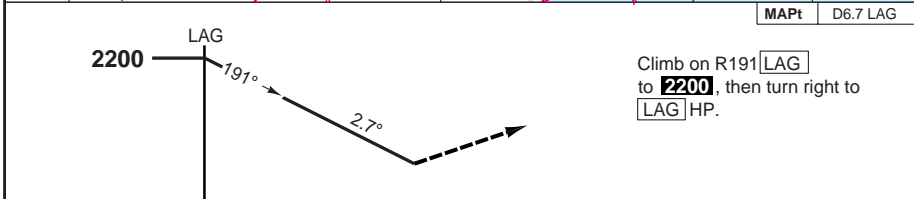
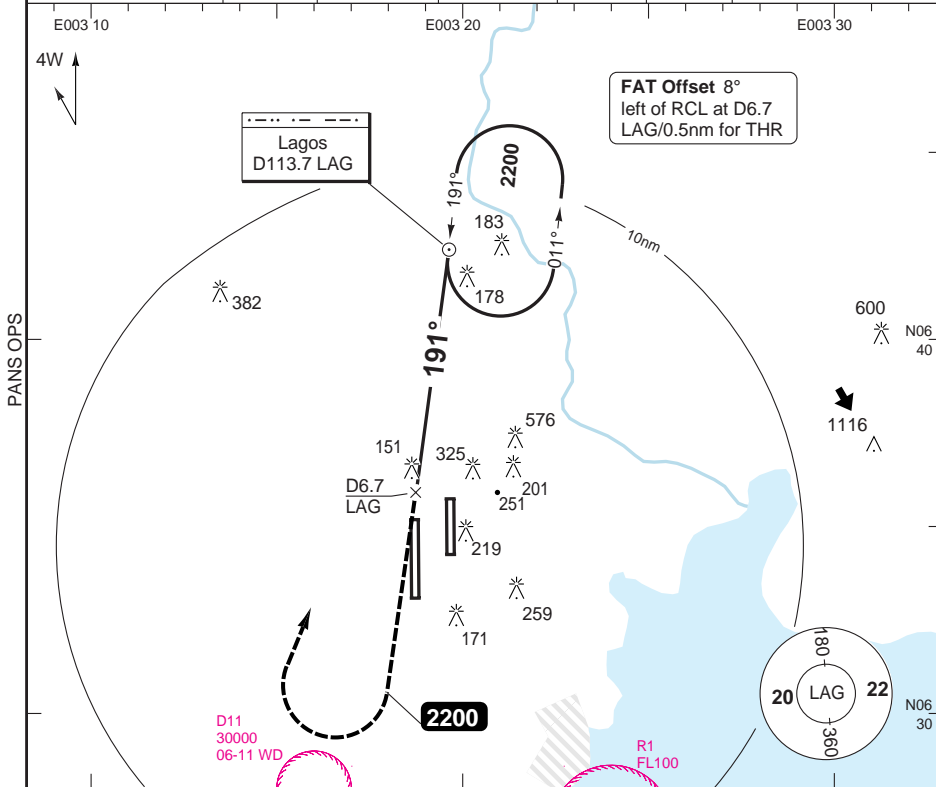
THIS CHART IS A PART OF NAVIGRAPH NDAC AND IS INTENDED FOR FLIGHT SIMULATION USE ONLY

VOR RWY 18R LAG VOR/DME

Murtala Muhammed LAGOS

Lagos APP RAD 124.7	CTL 127.3 120.9	TWR 118.1 119.1	AFIS 124.3	GND 121.9	ATIS 123.8
------------------------	-----------------------	-----------------------	---------------	--------------	---------------

VOR/DME 113.7 LAG	FAT 191°	THR Elev 64	AD Elev 135	TL FL50	TA 3500
-------------------	----------	-------------	-------------	---------	---------



nm	11	10	9	8	7	6	5	4	3	2	1	0
----	----	----	---	---	---	---	---	---	---	---	---	---

ACFT	VOR+DME	Circling
A	620 (550) 1.8km	970 (830) 1.8km
B	620 (550) 2.4km	970 (830) 2.0km
C	620 (550) 2.8km	1070 (930) 4.0km
D	620 (550) 2.8km	1070 (930) 4.4km

1 Flight Checked and found useable only at left side

DME LAG	2.7° ALT	LDA 3900x60 12795x196ft P3° (58)
1	1920	
2	1630	
3	1350	
4	1060	
5	770	

GS	80	100	120	140	160
ROD 2.7°	380	480	570	670	770

Change: New spec.

THIS CHART IS A PART OF NAVIGRAPH NDAC AND IS INTENDED FOR FLIGHT SIMULATION USE ONLY

JAR-OPS Landing Minima

Murtala Muhammed **LAGOS**

The following Minima is for Public Transport aircraft and conforms to JAR-OPS1 regulations.

STRAIGHT-IN APPROACH		C				D			
R/W	Procedure	DA/ MDA QNH ft	DH/ MDH QFE ft	Vis m	Vis No ALS m	DA/ MDA QNH ft	DH/ MDH QFE ft	Vis m	Vis No ALS m
18L	ILS/DME (1)	350	220	800	1200	360	230	800	1200
18L	LOC/DME	540	400	1600	2400	540	400	2000	2800
18L	VOR/DME	660	520	2000	2800	660	520	2800	3200
18R	ILS/DME (1)	400	330	800	1200	410	340	800	1200
18R	LOC/DME	490	420	1600	2400	490	420	2000	2800
18R	VOR/DME	620	550	2400	3200	620	550	2800	3600

Notes:

(1) Values shown are RVR/Vis.

CIRCLING		C			D		
R/W	Procedure	MDA QNH ft	MDH QFE ft	Vis m	MDA QNH ft	MDH QFE ft	Vis m
18R	ILS/DME, LOC/DME	1070	930	3700	1070	930	4600
18L/R	All other procs	1070	930	4000	1070	930	4400

Notes:

TAKE-OFF		C		D	
Runway	Facilities	RVR	Vis	RVR	Vis
All (1)	-	-	-	-	-

Notes:

(1) Take-off Minima must be equal to or greater than Landing Minima.

JAR-OPS Landing Minima

Murtala Muhammed **LAGOS**

The following Minima is for Public Transport aircraft and conforms to JAR-OPS1 regulations.

STRAIGHT-IN APPROACH		A				B			
R/W	Procedure	DA/ MDA QNH ft	DH/ MDH QFE ft	Vis m	Vis No ALS m	DA/ MDA QNH ft	DH/ MDH QFE ft	Vis m	Vis No ALS m
18L	ILS/DME (1)	340	200	800	1200	340	210	800	1200
18L	LOC/DME	540	400	1400	2200	540	400	1400	2200
18L	VOR/DME	660	520	1600	2400	660	520	1600	2400
18R	ILS/DME (1)	380	310	800	1200	390	320	800	1200
18R	LOC/DME	490	420	1400	2000	490	420	1400	2000
18R	VOR/DME	620	550	1600	2400	620	550	1600	2400

Notes:

(1) Values shown are RVR/Vis.

CIRCLING		A			B		
R/W	Procedure	MDA QNH ft	MDH QFE ft	Vis m	MDA QNH ft	MDH QFE ft	Vis m
18R	ILS/DME, LOC/DME	970	830	1900	970	830	2800
18L/R	All other procs	970	830	1600	970	830	2000

Notes:

TAKE-OFF		A		B	
Runway	Facilities	RVR	Vis	RVR	Vis
All (1)	-	-	-	-	-

Notes:

(1) Take-off Minima must be equal to or greater than Landing Minima.