

Airport information:

Country: Ghana

City: ACCRA

Coordinates: N 05° 36.0', W 000° 10.2'

Elevation: 205

Customs: : H24

Fuel: Jet A1, Jet A1

RFF: CAT 9

hours: H24.

Runways:

Runway 03

Takeoff length: 3403, Landing length: 3403

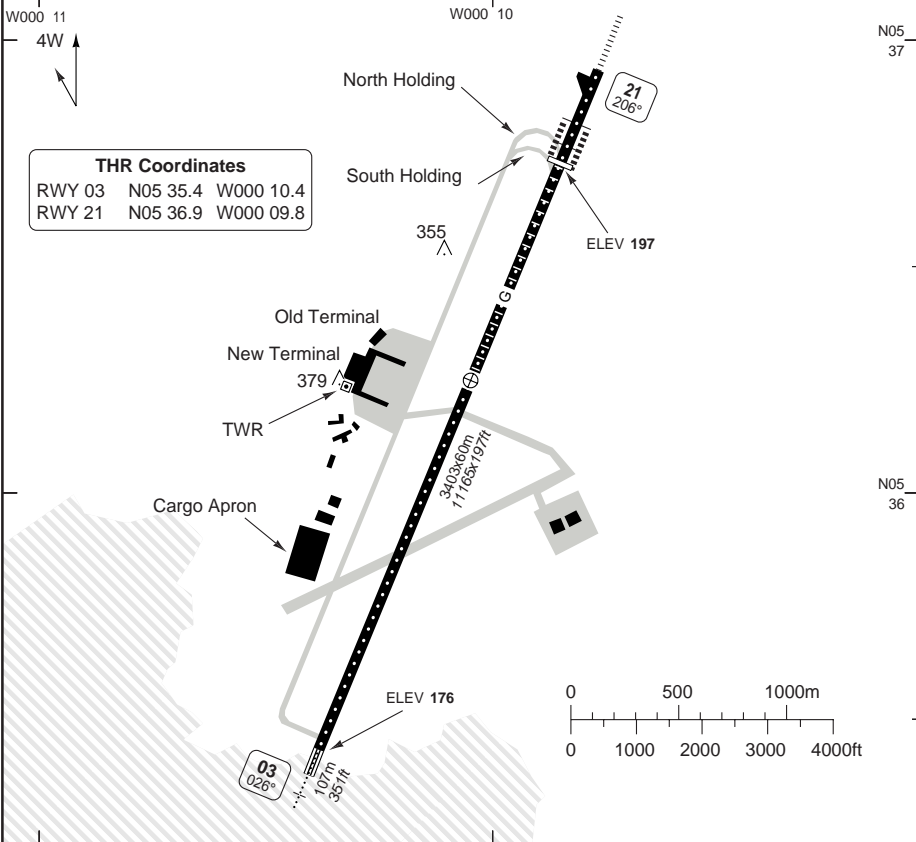
Runway 21

Takeoff length: 3403, Landing length: 2992

AERODROME

Accra GND 121.9	TWR 118.6	CTL 126.7 North 123.1 South	ATIS 113.1
---------------------------	---------------------	---	----------------------

AD Elev 205	ARP: N05 36.3 W000 10.1	RFF: CAT 9	AD HR: H24
--------------------	-------------------------	------------	------------



RWY	Slope	TORA m/ft	LDA m/ft	ALS	REDL	RCLL	Additional
03	+0.2	3403 / 11165	3403 / 11165	L-E ①	L ②	30m	P 3° L/R
21	-0.2	3403 / 11165	2990 / 9810	H-B	H ②	30m	P 3° L/R

① 355m. ② Last 600m Amber

EU OPS TAKE OFF MINIMA

RWY	Facilities	RVR		
		A	B	C D
03/21	RCL (day only) or RCL + REDL	400 m		
	NIL (day only)	500 m		

© Navitech - dgaa01laorg0

Change: ATIS freq, TWY

AERODROME Parking

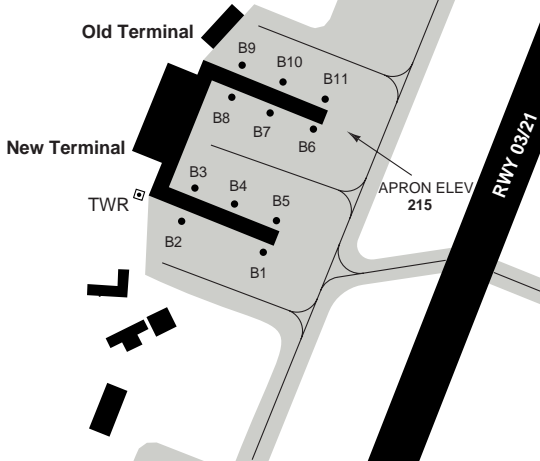
Kotaka INTL ACCRA

10 - 2

Accra GND 121.9	TWR 118.6	CTL 126.7 North 123.1 130.9 South	ATIS 113.1
---------------------------	---------------------	--	----------------------

Stand B5 and B6 for B767 ACFT

Note: CAT E and F ACFT shall not taxi past bay numbers 5 and 6. Whenever CAT E and F ACFT are parked on either bay 5 or 6 or both. All such ACFT shall enter and backtrack RWY 21 and 03 either parking or TKOF.



Parking position coordinates

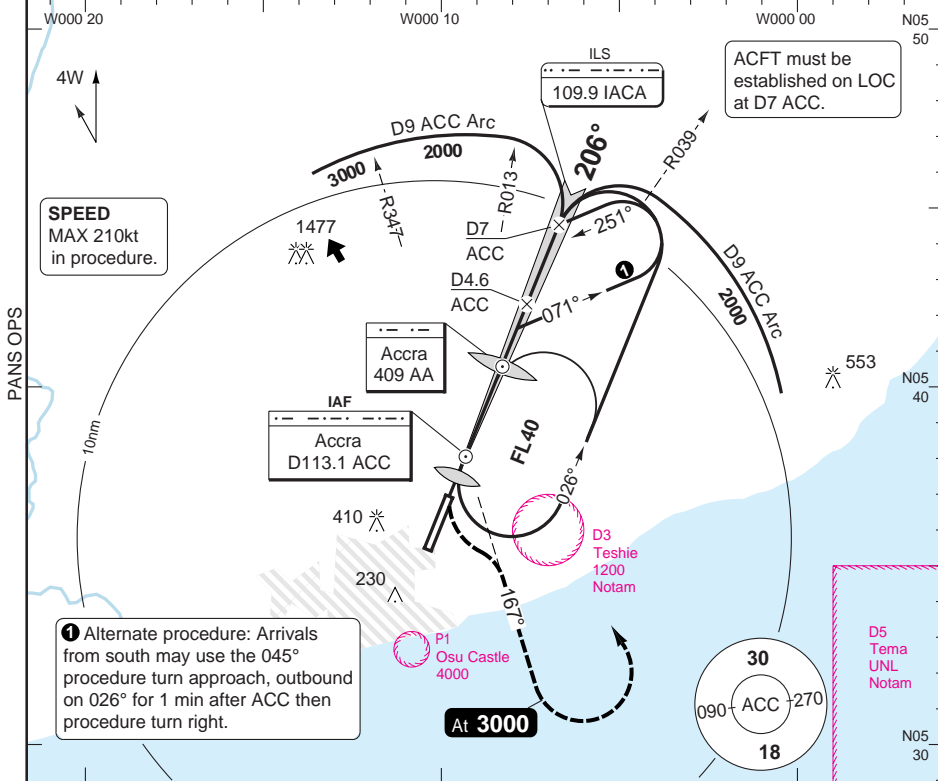
B1, B5, B6	N05 36.2	W000 10.2
B2, B3, B4	N05 36.2	W000 10.3
B8	N05 36.3	W000 10.3
B7, B9-B11	N05 36.3	W000 10.2

GENERAL INFORMATION

- 1. WARNING**
Bird activity, especially below 3000.
APCH RWY 21: Watch out for downdraft.
- 2. COMMUNICATION**
ACFT operating in the Northern sector of the FIR are to contact ACCRA on 8903KHz if two way communication is not established on 126.7.
- 3. RWY RESTRICTION**
All heavy aircraft (136T or more) must use full length of RWY.
- 4. TWY RESTRICTION**
North Holding is closed. All aircraft taxiing for RWY 21 must enter via the South holding point.
- 5. PARKING**
 - 5.1 CAT D, E and F ACFT on arrival will be parked on the Cargo Apron to await availability of space for refuelling.
 - 5.2 CAT D, E and F ACFT will be marshalled onto stand B1.
 - 5.3 ACFT taxiing onto stand are to switch off taxi lights before turning onto stand.
- 6. DEPARTURE PROC RWY 03**
Climb to 3000 on RWY heading before setting course.
- 7. DEPARTURE PROC RWY 21**
Turn left 167° for 2min (or until passing the coastline) and climb to 4000ft with maximum climb gradient before setting on course.
- 8. ARRIVAL PROC RWY 21**
 - 8.1 Aircraft arriving from E/W maintaining 3000 should descend to 2000 after it has been given the final turn to intercept the LOC.
 - 8.2 Aircraft vectored to cross LOC for spacing should maintain 3000 until being given the final turn to intercept the LOC.

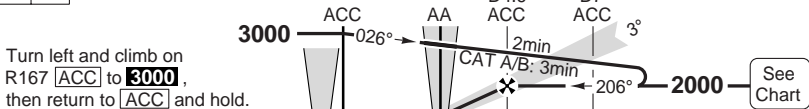
ILS RWY 21 VOR/DME

Accra CTL	APP	TWR	GND	ATIS
126.7 North 130.9 South	123.1 119.1	119.5 118.6	121.9	113.1
ILS 109.9 IACA	FAT 206°	DTHR Elev 197	AD Elev 205	TL 40 TA 3000



① Alternate procedure: Arrivals from south may use the 045° procedure turn approach, outbound on 026° for 1 min after ACC then procedure turn right.

MAPt MM



ACFT	ILS	LOC+DME	Circling
A			1000 (795) 1.5km
B	420 (223) 550m	480 (283) 750m	1000 (795) 1.6km
C			1000 (795) 2.4km
D			1000 (795) 3.6km

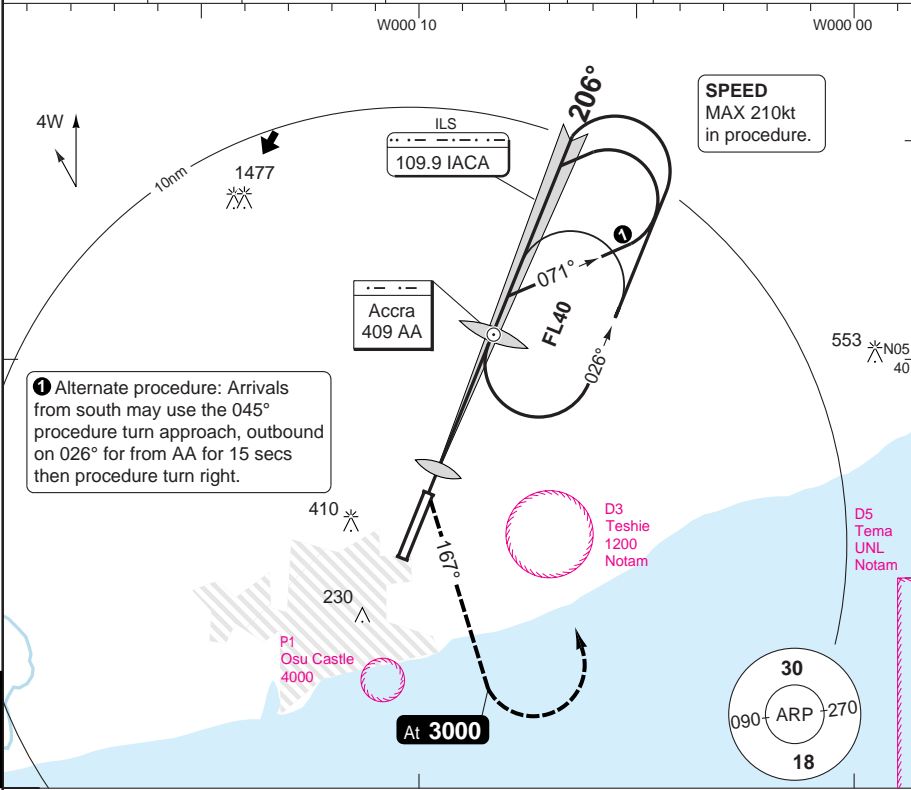
DME ACC	2.8° ALT	LDA 2990x60 9810x197ft P 3° L/R
4.6	2000	
4	1820	
3	1520	
2	1220	
1	920	
0	620	
0.4	480	

GS	80	100	120	140	160
ROD 2.8°	410	510	610	710	810

Change: ATIS freq

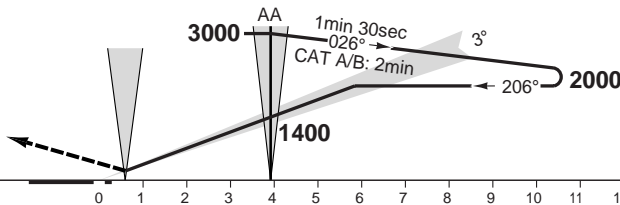
ILS RWY 21 NDB

Accra CTL	APP	TWR	GND	ATIS	
126.7 North	123.1	119.5	118.6	121.9	113.1
130.9 South	119.1				
ILS 109.9 IACA	FAT 206°	DTHR Elev 197	AD Elev 205	TL 40	TA 3000



50 - 2

Turn left and climb on 167° to **3000**, then return to **AA**.



ACFT	ILS	Circling
A	420 (223) 550m	1000 (795) 1.5km
B		1000 (795) 1.6km
C		1000 (795) 2.4km
D		1000 (795) 3.6km

LDA 2990x60
9810x197ft
P 3° L/R



FALS

© Navtech - dgaa02iaip00

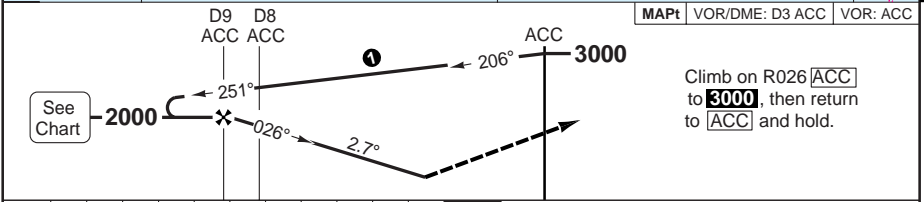
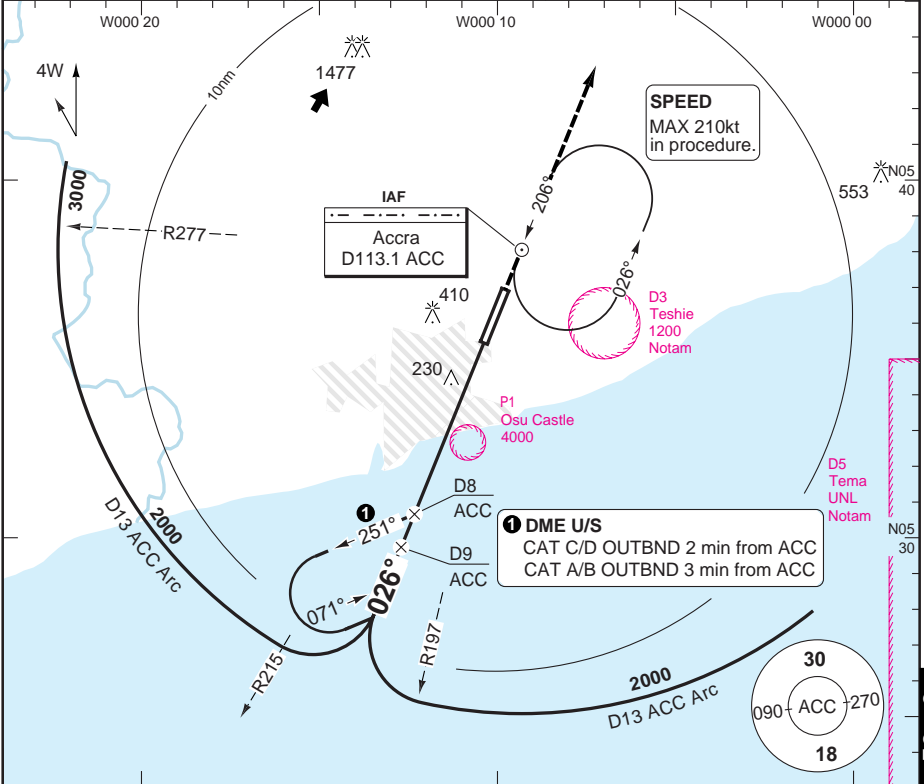
Change: ATIS freq

VOR RWY 03

Kotoka INTL ACCRA

Accra CTL	APP	TWR	GND	ATIS
126.7 North 123.1	119.5	118.6	121.9	113.1
130.9 South	119.1			

VOR/DME 113.1 ACC	FAT 026°	THR Elev 176	AD Elev 205	TL 40	TA 3000
-------------------	----------	--------------	-------------	-------	---------



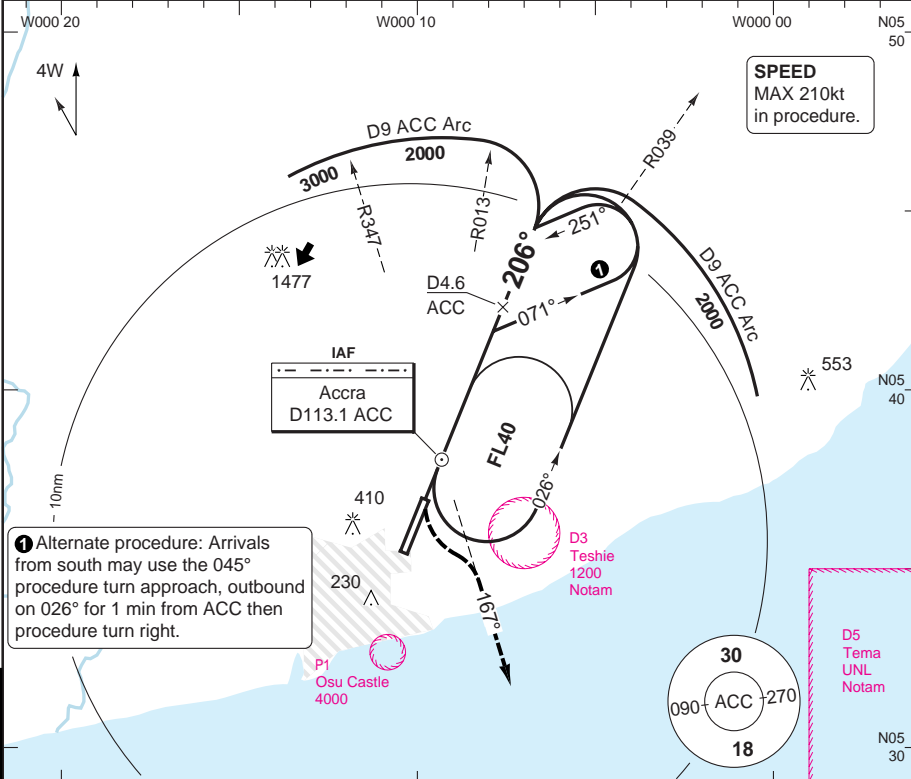
nm	11	10	9	8	7	6	5	4	3	2	1	0	
ACFT	VOR+DME		VOR		VOR a		Circling		Circling a		DME ACC	2.7° ALT	LDA 3403x60 11165x197ft P 3° L/R
A					530 (353) 1600m		1000 (795) 1.5km		1000 (795) 1.6km		9	2000	
B	480 (303) 1200m		530 (353) 1400m				1000 (795) 1.6km		1000 (795) 1.6km		8	1720	
C					530 (353) 1800m		1000 (795) 2.4km		1000 (795) 2.4km		7	1430	
D							1000 (795) 3.6km		1000 (795) 3.6km		6	1150	
	GS	80	100	120	140	160	a Non CDFA				5	860	BALS
	ROD 2.7°	390	480	580	670	770					4	570	
											3.7	480	355

Change: ATIS freq

VOR RWY 21

Accra CTL	APP	TWR	GND	ATIS
126.7 North	123.1	119.5	118.6	121.9
130.9 South	119.1			113.1

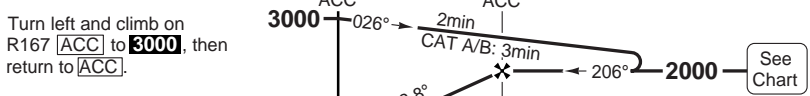
VOR/DME	113.1 ACC	FAT	206°	DTHR Elev	197	AD Elev	205	TL	40	TA	3000
---------	-----------	-----	------	-----------	-----	---------	-----	----	----	----	------



1 Alternate procedure: Arrivals from south may use the 045° procedure turn approach, outbound on 026° for 1 min from ACC then procedure turn right.

50 - 4

MAPt	VOR/DME: D0.5 after ACC	VOR: ACC
-------------	-------------------------	----------



ACFT	VOR+DME	VOR	VOR a	Circling	a Non CDFA	DME ACC	2.8° ALT	LDA 2990x60 9810x197ft P 3° L/R
A	480 (283) 750m	550 (353) 900m	550 (353) 1100m	1000 (795) 1.5km	a Non CDFA	4.6	2000	
B			550 (353) 1300m	1000 (795) 1.6km		4	1820	
C			550 (353) 1300m	1000 (795) 2.4km		3	1520	
D			550 (353) 1300m	1000 (795) 3.6km		2	1220	
GS	80	100	120	140	160	0	620	
ROD 2.8°	410	510	610	710	810	0.4	480	

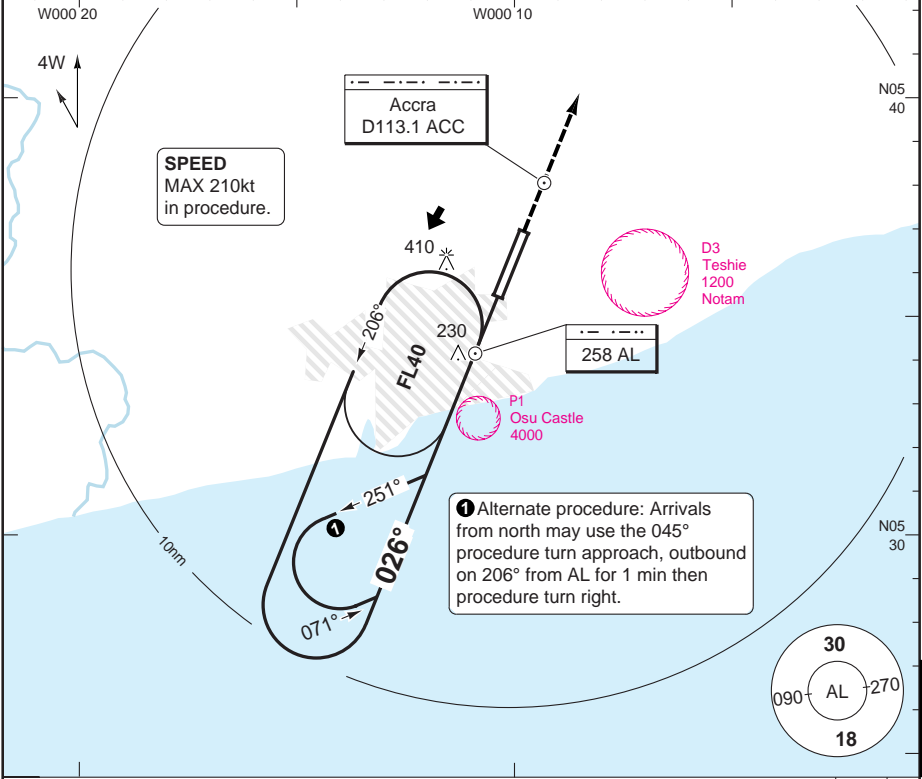
© Navtech - dgaa04aip00

FALS

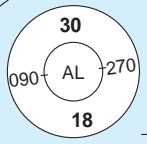
NDB RWY 03

Accra CTL	APP	TWR	GND	ATIS	
126.7 North	123.1	119.5	118.6	121.9	113.1
130.9 South	119.1				

NDB 258 AL	FAT 026°	THR Elev 176	AD Elev 205	TL 40	TA 3000
------------	----------	--------------	-------------	-------	---------

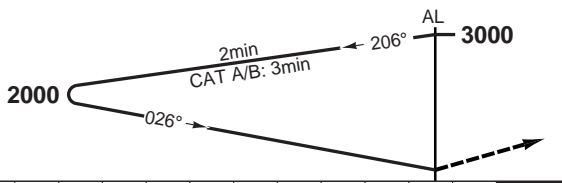


1 Alternate procedure: Arrivals from north may use the 045° procedure turn approach, outbound on 206° from AL for 1 min then procedure turn right.



50 - 5

MAPt AL



Climb on 026° to **3000**, then return to **AL** or as instructed.

nm	11	10	9	8	7	6	5	4	3	2	1	0
ACFT	NDB											
A	530 (353) 1400m	NDB a		Circling		Circling a		a Non CDFA				
B		530 (353)	1000 (795)	1000 (795)	1000 (795)							
C		1600m	1.5km	1.6km	1.6km							
D		1800m	2.4km	2.4km	2.4km							
		530 (353)	1000 (795)	1000 (795)	1000 (795)							
		1800m	3.6km	3.6km	3.6km							

LDA 3403x60
11165x197ft
P 3° L/R

G

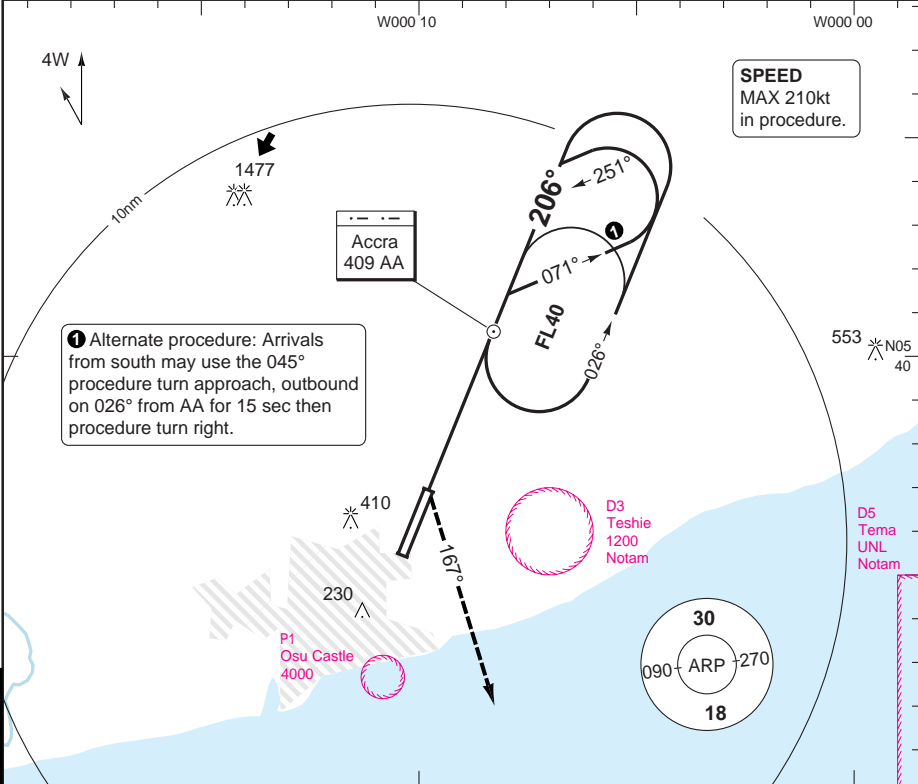
BALS

355

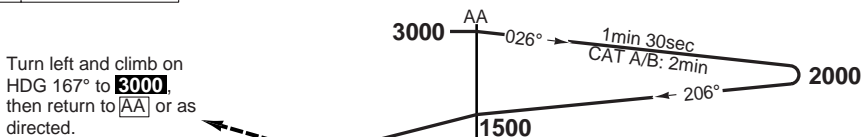
NDB RWY 21

Accra CTL	APP	TWR	GND	ATIS
126.7 North 123.1	119.5	118.6	121.9	113.1
130.9 South	119.1			

NDB 409 AA	FAT 206°	DTHR Elev 197	AD Elev 205	TL 40	TA 3000
------------	----------	---------------	-------------	-------	---------



MAPt THR / 3.9nm after AA



ACFT	NDB	Circling	GS	80	100	120	140	160	LDA 2990x60 9810x197ft P 3° L/R
A	680 (483) 1500m	1000 (795) 1.5km	ROD 3.0°	430	540	650	760	860	 FALS
B		1000 (795) 1.6km	AA +20s	1360	1330	1290	1250	1220	
C		1000 (795) 2.4km	+40s	1220	1150	1080	1010	930	
D		1000 (795) 3.6km	+60s	1080	970	860	760	-	
			AA - 680	1:55	1:32	1:16	1:05	0:57	
			AA - MAPt	2:55	2:20	1:57	1:40	1:28	

JAR-OPS Landing Minima

Kotoka INTL ACCRA

The following Minima is for Public Transport aircraft and conforms to JAR-OPS1 regulations.

STRAIGHT-IN APPROACH		C				D			
R/W	Procedure	DA/ MDA QNH ft	DH/ MDH QFE ft	RVR m	RVR No ALS m	DA/ MDA QNH ft	DH/ MDH QFE ft	RVR m	RVR No ALS m
03	VOR/DME	480	310	1600	1800	480	310	1800	2000
03	VOR	530	360	1600	1800	530	360	1800	2000
03	NDB (AL)	530	360	1600	1800	530	360	1800	2000
21	ILS	420	230	600	1000	420	230	600	1000
21	LOC (1)	480	290	800	1600	480	290	1200	1800
21	VOR/DME	480	290	800	1600	480	290	1200	1800
21	VOR	550	360	1000	1800	550	360	1400	2000
21	NDB (AA)	680	490	1200	2000	680	490	1600	2000

Notes:

(1) Procedure only authorised with VOR/DME.

CIRCLING		C			D		
R/W	Procedure	MDA QNH ft	MDH QFE ft	Vis m	MDA QNH ft	MDH QFE ft	Vis m
All procs		1000	800	2400	1000	800	3600

Notes:

TAKE-OFF		C		D	
Runway	Facilities	RVR	Vis	RVR	Vis
03/21	REDL and/or RCL	400	-	400	-
03/21	Nil (Day only)	500	-	500	-

Notes:

JAR-OPS Landing Minima

Kotoka INTL ACCRA

The following Minima is for Public Transport aircraft and conforms to JAR-OPS1 regulations.

STRAIGHT-IN APPROACH		A				B			
R/W	Procedure	DA/ MDA QNH ft	DH/ MDH QFE ft	RVR m	RVR No ALS m	DA/ MDA QNH ft	DH/ MDH QFE ft	RVR m	RVR No ALS m
03	VOR/DME	480	310	1300	1500	480	310	1400	1500
03	VOR	530	360	1300	1500	530	360	1400	1500
03	NDB (AL)	530	360	1300	1500	530	360	1400	1500
21	ILS	420	230	600	1000	420	230	600	1000
21	LOC (1)	480	290	800	1500	480	290	800	1500
21	VOR/DME	480	290	800	1500	480	290	800	1500
21	VOR	550	360	900	1500	550	360	1000	1500
21	NDB (AA)	680	490	1000	1500	680	490	1200	1500

Notes:

(1) Procedure only authorised with VOR/DME.

CIRCLING		A			B		
R/W	Procedure	MDA QNH ft	MDH QFE ft	Vis m	MDA QNH ft	MDH QFE ft	Vis m
All procs		1000	800	1500	1000	800	1600

Notes:

TAKE-OFF		A		B	
Runway	Facilities	RVR	Vis	RVR	Vis
03/21	REDL and/or RCL	400	-	400	-
03/21	Nil (Day only)	500	-	500	-

Notes: